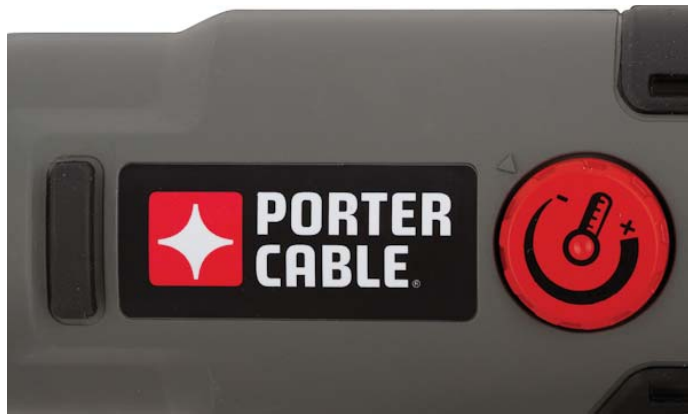


Part#: 30WHG2



Part#	Description	Temperature Range	Amps at 120V	#/Case
30WHG2	Heat Gun	120 to 1150 F	11.7	1/Box

Application

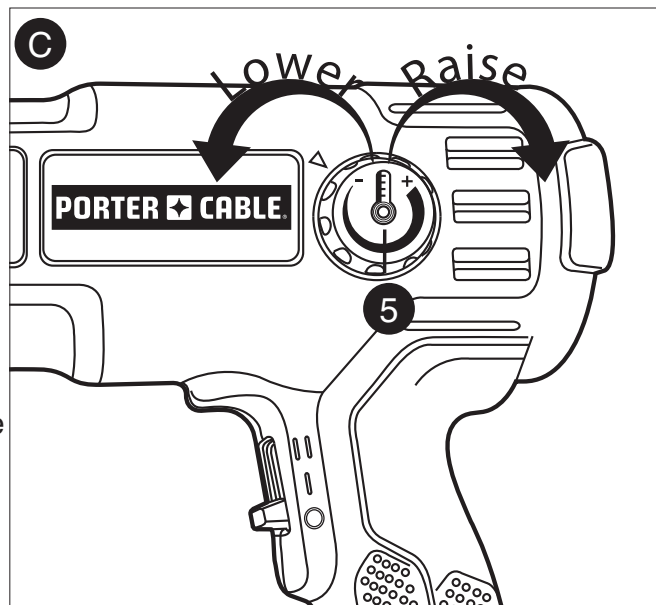
Paint removal, bending plastic pipes, welding plastics, removing adhesive tiles, shrinking plastic tubing



Supplied By: **The Cary Company**
Ph: 630-629-6600
www.thecarycompany.com

TEMPERATURE ADJUSTMENT KNOB - FIGURE C

- To raise the air temperature, turn the knob (5) clockwise.
- To lower the air temperature turn the knob (5) counterclockwise.



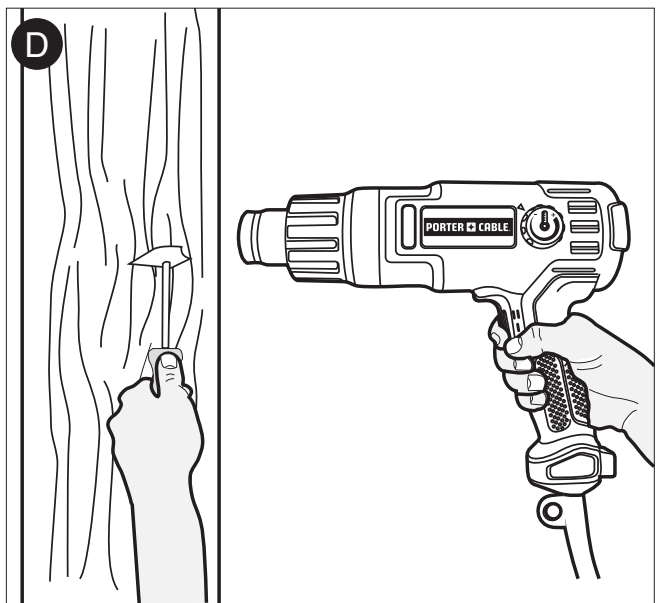
REMOVING PAINT - FIGURE D

Efficient paint removal requires the development of technique. Follow the guidelines in this manual and you'll find that you will have mastered the procedure after a few simple projects.

Turn on the tool and hold the nozzle about one inch (25mm) from the surface to be stripped, as shown in **figure D**.

(Give the unit about 15-20 seconds running time to reach its full heat potential.) The paint being heated will usually begin to blister when it reaches the proper temperature for stripping. When it reaches this point begin scraping with smooth, even strokes. If the paint is sufficiently hot and the scraper is properly suited to the surface being stripped, the paint should come off in a strip equal to the full width of the scraper. Move the unit slightly ahead of the scraper to assure that the paint being stripped is softened. Best results will be achieved if the heat gun is moved slowly, but constantly, from side to side to evenly distribute heat. Do not linger or pause in one spot.

Remember that splinters and small particles of stripped paint can be ignited and blown through holes and cracks in the surface being stripped.



HINTS ABOUT PAINT STRIPPING

A smooth, downward scraping action will give good results and will help to prevent gouging the work surface.

With some paints, prolonged heating will actually make them tougher to strip. Try a few different heating times until you develop the technique best suited to your particular application.

The heat gun is designed to remove both oil based and latex based paints.

It will not remove stains or primer coats that have impregnated the wood grain.

Scrape paint as soon as it softens, it will soon cool and harden again. Clean the edge of your scraper often to retain a clean, sharp edge. Shield areas adjacent to where you're scraping. For example: shield the door with nonflammable materials if you're stripping the door frame.

Don't concentrate the tools heat on a window pane or other glass surface. Excessive heat may crack the glass. Use some nonflammable material to shield the glass when stripping the window frame.

OTHER USES

For hands free operation, place the heat gun on a flat surface as shown in **figure E**.

Aside from stripping paint, your heat gun has a wide array of other uses. Use it for softening linoleum and floor tile and for loosening heat sensitive adhesives. It's perfect for use with heat shrinkable tubing and anywhere you need a portable heat source. You can even use it to thaw frozen metal water pipes.