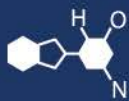


IF YOU...



MIX IT. FILL IT. PACK IT. SHIP IT.

WE HAVE A PRODUCT FOR YOU

Part #: 30WHN2

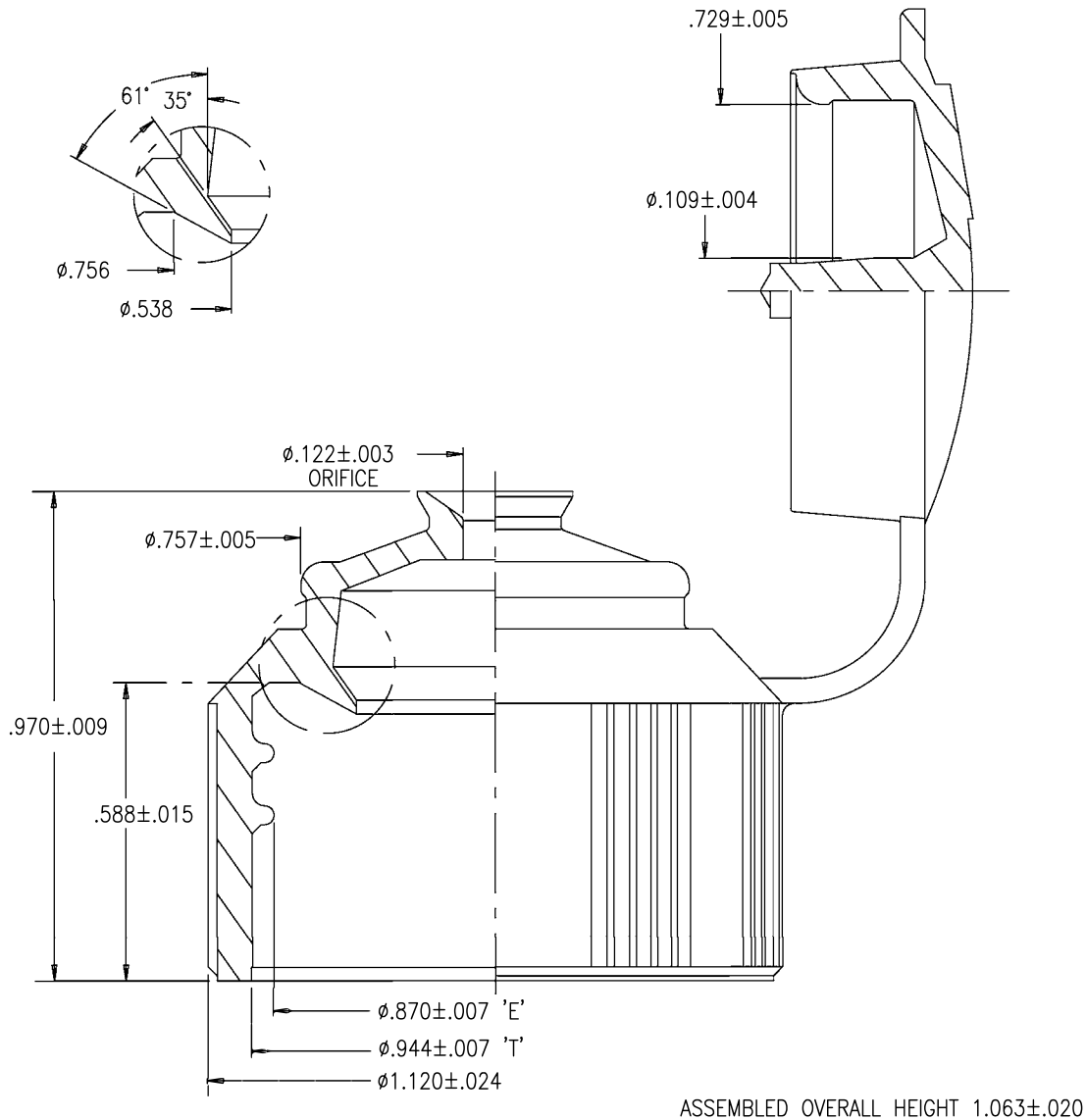


The
CARY COMPANY
Est. 1895

1195 W. Fullerton Ave. | Addison, IL 60101 | T: 630.629.6600 | F: 630.629.3690 |

Drawing No.	Revision
10-1965	-

Standard Part Drawing



PART NUMBER	1965	THIS DRAWING IS PROVIDED FOR INFORMATIONAL PURPOSES ONLY. THE INFORMATION SHOWN MAY BE DIMENSIONALLY CONTROLLED OR FUNCTIONALLY CONTROLLED.
PART NAME	24mm CAPTIVE HINGED DISPENSER	
MATERIAL TYPE	REFER TO STANDARD PART SPECIFICATION	
MATERIAL FORMULATION	REFER TO STANDARD PART SPECIFICATION	
COLOR	REFER TO STANDARD PART SPECIFICATION	
ORIGINAL DRAWING DATE	1/19/83	The CARY COMPANY Est. 1895 P: 630-629-6600 F: 630-629-3690 1195 W. Fullerton Ave. Addison, IL 60101 www.thecarycompany.com
LATEST REVISION DATE	1/22/01	
DRAWING SCALE	NOT TO SCALE	
APPROVED BY		