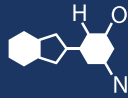


IF YOU...



MIX IT. FILL IT. PACK IT. SHIP IT.

WE HAVE A **PRODUCT** FOR YOU

Part #: 30WK4P



The
CARYCOMPANY
Est. 1895

1195 W. Fullerton Ave. | Addison, IL 60101 | T: 630.629.6600 | F: 630.629.3690 |



CAN PRODUCT CODE

420AP

LID PRODUCT CODE

421AP

- Mold Cavity Identification
- Date Coded for Traceability
- Recycled Logo: #5 PP
- Leak Tested 100%

SPECIFICATIONS: CONTAINER

Height: 4.933" +/- 0.025"
Body Diameter: 4.25"
Resin Type: Recycled Polypropylene (Black)
Overflow Capacity: Minimum, 34 fluid ounces
Compression Strength: 600 lb. minimum
Weight: 79 g

PACKAGING

Cans per Pallet: 1,188
Height: 49" - 9 Layers
Pallet Dimensions: 44" x 56"

SPECIFICATIONS: LID

Outer Diameter: 3.88"
Flat Surface: 2.875"
Thickness: 0.30"
Resin Type: Recycled Polypropylene (Black)
Weight: 10.5 g

PACKAGING

Lids per Box: 522
Boxes per Pallet: 30
Total Lids per Pallet: 16,560
Pallet Dimensions: 44" x 56"

FULL TRUCKLOAD CAPACITY

- 53' Trailer
 - 110" Clearance
 - Swing Door
 - Dry Van
- Cans and Lids: 48,708 Cans / 49,680 Lids Cans Only: 52,272

