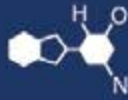


IF YOU...



MIX IT. FILL IT. PACK IT. SHIP IT.

WE HAVE A PRODUCT FOR YOU

Part #: 30WKQB



The
CARY COMPANY
Est. 1895

1195 W. Fullerton Ave. | Addison, IL 60101 | T: 630.629.6600 | F: 630.629.3690 |

TruSnap™ One Quart



CAN PRODUCT CODE

420AP

LID PRODUCT CODE

421AP

- Mold Cavity Identification
- Date Coded for Traceability
- Recycled Logo: #5 PP
- Leak Tested 100%

SPECIFICATIONS: CONTAINER

Height: 4.933" +/- 0.025"

Body Diameter: 4.25"

Resin Type: Recycled Polypropylene (Black)

Overflow Capacity: Minimum, 34 fluid ounces

Compression Strength: 600 lb. minimum

Weight: 79 g

PACKAGING

Cans per Pallet: 1,188

Height: 49" - 9 Layers

Pallet Dimensions: 44" x 56"

SPECIFICATIONS: LID

Outer Diameter: 3.88"

Flat Surface: 2.875"

Thickness: 0.30"

Resin Type: Recycled Polypropylene (Black)

Weight: 10.5 g

PACKAGING

Lids per Box: 522

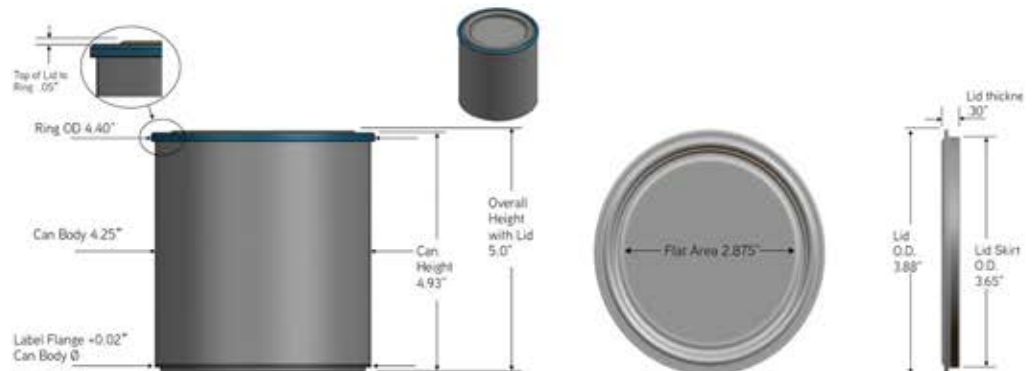
Boxes per Pallet: 30

Total Lids per Pallet: 16,560

Pallet Dimensions: 44" x 56"

FULL TRUCKLOAD CAPACITY

- 53' Trailer
 - 110" Clearance
 - Swing Door
 - Dry Van
- Cans and Lids: 48,708 Cans / 49,680 Lids Cans Only: 52,272



The
CARY COMPANY
Est. 1895