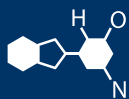


IF YOU...



MIX IT. FILL IT. PACK IT. SHIP IT.

WE HAVE A **PRODUCT** FOR YOU

Part # 30WL29

Metal Lug Caps

38mm 38-2000 Gold Button Metal Lug Cap w/Plastisol Liner



The
CARYCOMPANY
Est. 1895

TECHNICAL DATA SHEET					
Date: 11/12/2013 Version: 4					
Cap size: 38mm PLCT (KD-38-S1 / S-1581)					
Description: Plastisol Lined CT cap; flat top with knurls, made for sealing jars.					
DIMENSIONS					
Glass Finish: GPI 400					
A (Plug Dia.) 1.385/1.402"					
B (Outside Dia.) 1.577/1.614"					
C (Overall Height) .392/.412"					
D (Compound Thickness) .026/.049"					
Materials					
Electrolytic tin plate or Tin free steel					
• Minimum Nominal Thickness: .0081"					
Interior Coating					
• Food grade interior coating system specified according to product requirement. (FDA compliant)					
Exterior Coating					
• White, clear or gold base coat with over varnish as required					
• Printing decoration according to customer specification.					
Compound					
• Food grade plastisol according to thermal process (pasteurization, hot fill and cool, dry seal, retort) and product type (oily and non-oily). (FDA compliant)					
USE CONDITIONS					
The 38mm PLCT closure is not intended for use on packages or products that result in a net positive internal pressure greater than 15psi at time of consumer use; For use on any such product, it is the sole responsibility of the customer to ensure the closure & package performance is acceptable for commercial use.					
Pasteurization***	<table border="0"> <tr> <td style="text-align: center;">Yes</td> <td style="text-align: center;">No</td> </tr> <tr> <td style="text-align: center;">X</td> <td></td> </tr> </table>	Yes	No	X	
Yes	No				
X					
Hot Fill***	X				
Retort***					
PACKAGING					
Carton					
Size (in)	16Hx20Lx12D				
Caps Qty.	3,400				
Gross Weight	44 lbs.				
Pallet					
Size (in)	44 x 56				
Cartons per pallet	40				
Caps per pallet	136,000				
Stacking: Cap cartons should not be stacked more than 2 pallets high					
Storage conditions: Temperature range from 40 - 86°F (5 - 30°C) - relative humidity below 70%. Closures should be used within 2 years of the manufacturing date on the carton.					