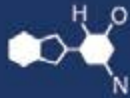


IF YOU...



MIX IT. FILL IT. PACK IT. SHIP IT.

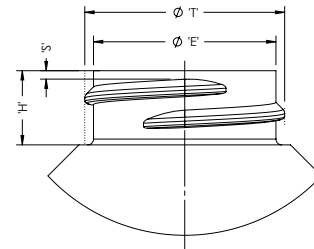
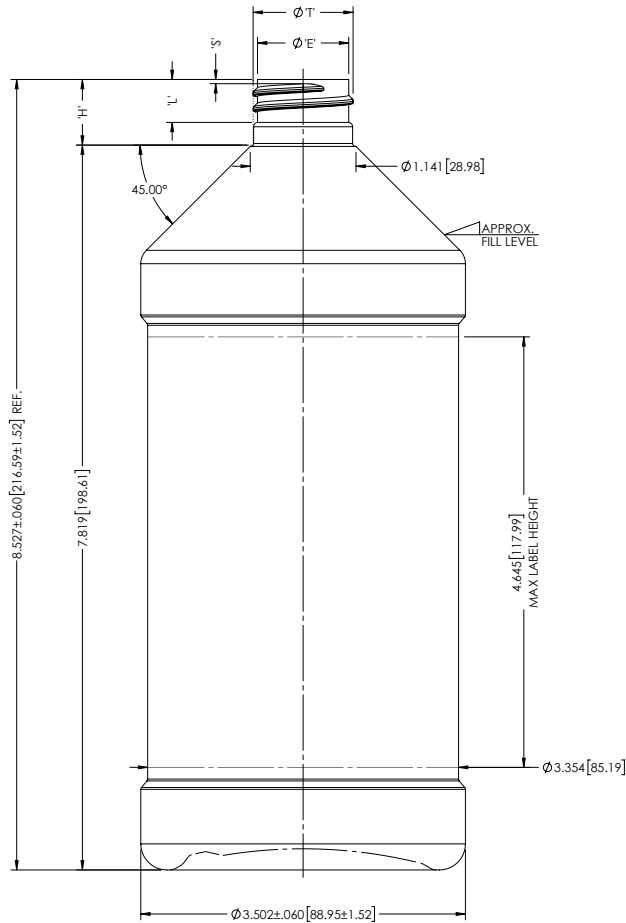
WE HAVE A **PRODUCT** FOR YOU

Part #: 30WMRA

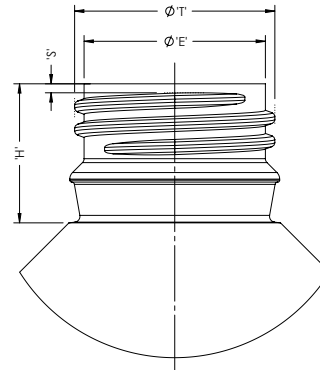


The
CARYCOMPANY
Est. 1895

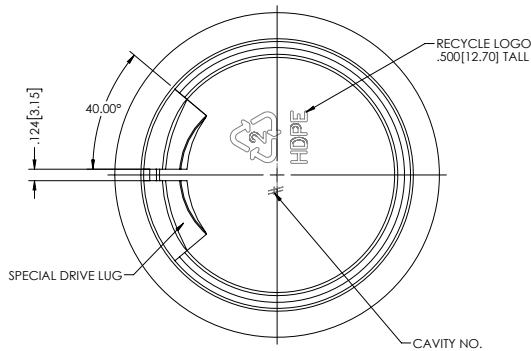
1195 W. Fullerton Ave. | Addison, IL 60101 | T: 630.629.6600 | F: 630.629.3690 |



ALTERNATE NECK : M28- SP400
OAH : 8.205 ± .060



ALTERNATE NECK : 28MM DROP-LOK
OAH : 8.555 ± .060



NECK FINISH: M28-SP400	GRAM WT. 52g±3	OFC: 1003cc ± 15		
'T'	'E'	'H'	'S'	'L'
1.078 ±0.010	.984 ±0.010	.400 ±0.015	.046 ±0.015	—
27.38 ±0.25	24.99 ±0.25	10.16 ±0.38	1.17 ±0.38	—
HELIX : < 2° 57'	T.P.I.: 6	CUTT. DIA.: 0.500[12.70]		

NECK FINISH: 28mm DROP-LOK	GRAM WT. 52g±3	OFC: 1008ml ± 15		
'T'	'E'	'H'	'S'	'L'
1.080 ±0.010	.978 ±0.010	.750 ±0.015	.050 ±0.015	—
27.43 ±0.25	24.84 ±0.25	19.05 ±0.38	1.27 ±0.38	—
HELIX : < 2° 17'	T.P.I.: 8	CUTT. DIA.: 0.750[19.05]		

DRAWING CHECKED SPECIFICALLY FOR:
 NECK FINISH
 WEIGHT
 CAPACITY
 MATERIAL
 SPECIAL REQUESTS
 PRODUCT DESIGN TO BE APPROVED BEFORE MOULD CAVITIES ARE MACHINED.
 APPROVED BY
 DATE

NO.	REV. BY	DESCRIPTION	DATE

NECK FINISH:	M28-SP410 SPEC	GRAM WT.	52g±3		
'T'	'E'	'H'	'S'	'L'	'W'
1.078 ±0.010	.984 ±0.010	.708 ±0.015	.046 ±0.015	.463 MIN	—
27.38 ±0.25	24.99 ±0.25	17.98 ±0.38	1.17 ±0.38	11.76 MIN	—
HELIX <:	2° 57'	T.P.I.:	6	CUTT. DIA.:	.500 [12.70]

CAPACITY TO FILL LEVEL BEFORE DECORATING	946.5cc ± 15
CAPACITY TO FILL LEVEL AFTER DECORATING	—
OVERFLOW CAPACITY BEFORE DECORATING	1007cc ± 15
OVERFLOW CAPACITY AFTER DECORATING	—



DRAWN BY: CML	DESC. 32oz. MODERN ROUND
SCALE: 1:1	DATE: 16 JUN/16
BOTTLE MAT'L: HDPE	DRAWING NO. 30WMRA
CAD NAME: PD 39460-8	MOULD NO. ----

TEMPORARY DRAWING-NOT RELEASED FOR PRODUCTION

THIS IS A SUGGESTED DESIGN FOR CUSTOMER APPROVAL. FINAL SIZES AND VOLUME ARE SUBJECT TO MOULDING SPECIFICATIONS AND PRODUCTION QUALIFICATIONS.

This drawing subject to standard industry tolerances S.P.I.