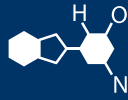


# IF YOU...



MIX IT. FILL IT. PACK IT. SHIP IT.

# WE HAVE A PRODUCT FOR YOU

Part # 30WPFW

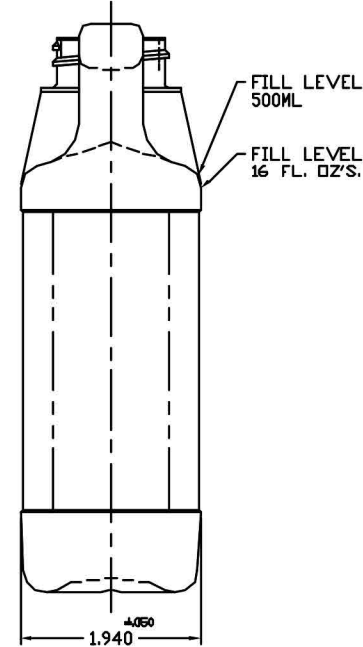
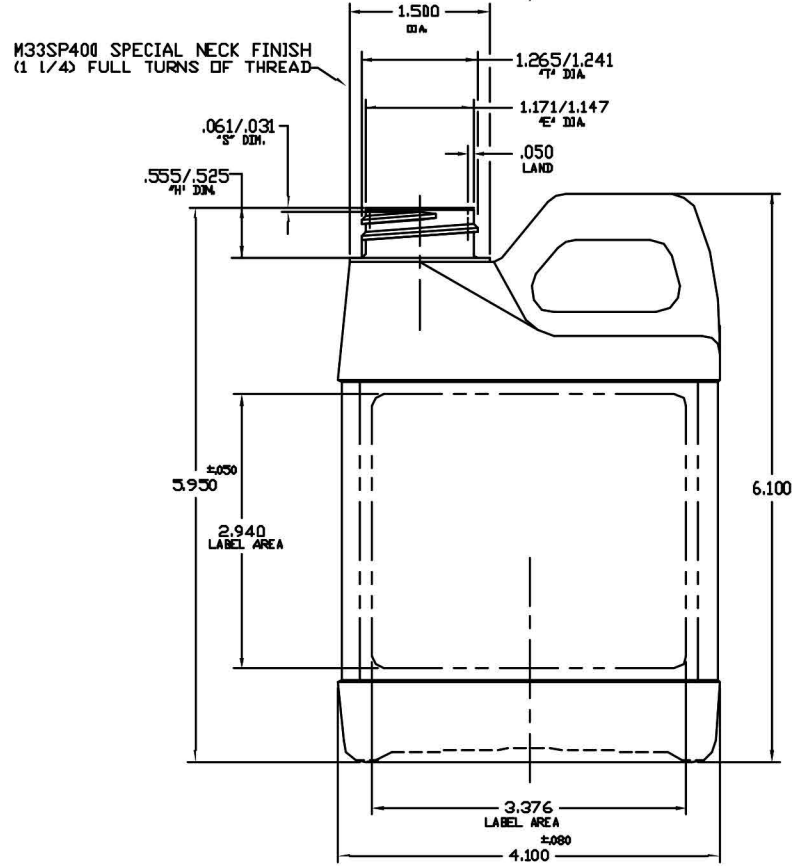
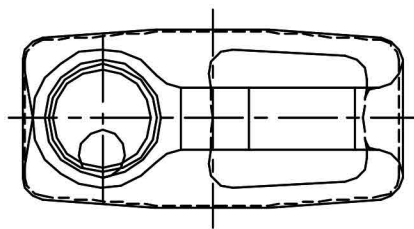
---

16 oz. White HDPE Plastic F-Style Bottle,  
33mm 33-400

---



REVISIONS	DATE	BY
ORIGINAL RELEASE	5/21/00	BSP
A WAS 45 GRAMS. WAS 546.00 CC'S. 18.46 OZ'S.	4/7/08	BSP



DUE TO MANUFACTURING VARIABLES CONTAINER OVERFLOW CAPACITIES AND FILL LEVELS ARE APPROXIMATE AND WILL BE FINALIZED AFTER SAMPLE CONTAINERS ARE PRODUCED. PATTERN AND MOLD CAVITY DISPLACEMENTS ARE RECOMMENDED.

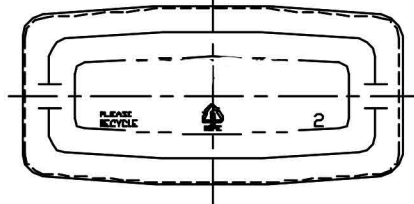
-NOTES-  
CONTAINER MAT'L- H.D.P.E.  
CONTAINER WEIGHT- 44  $\pm$  2 GRAMS.  
O/F CAPACITY- 18.50  $\pm$  44 FL. OZ'S.  
54705  $\pm$  13 CC'S.

**FINAL PRINT APPROVAL**

BY- \_\_\_\_\_ DATE- \_\_\_\_\_

\_\_\_\_\_

\_\_\_\_\_



FILE		The <b>CARY</b> COMPANY Est. 1895			
16 FL. OZ (500ML) 'F' STYLE HANDLEWARE					
SCALE 1:1/NOTED		JOB #			
MATERIAL SEE NOTES		DATE	BY	APPROV	DWG
PART C		BSP	4/7/08		
DRAWN BY		PBC-337S		REVISION	