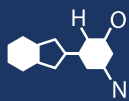


IF YOU...



MIX IT. FILL IT. PACK IT. SHIP IT.

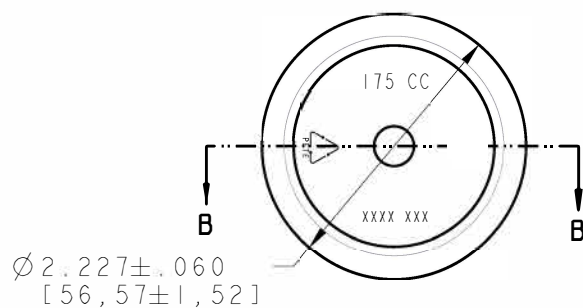
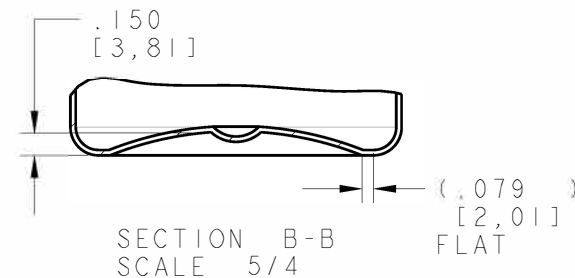
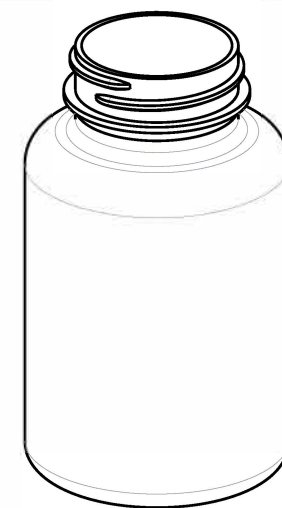
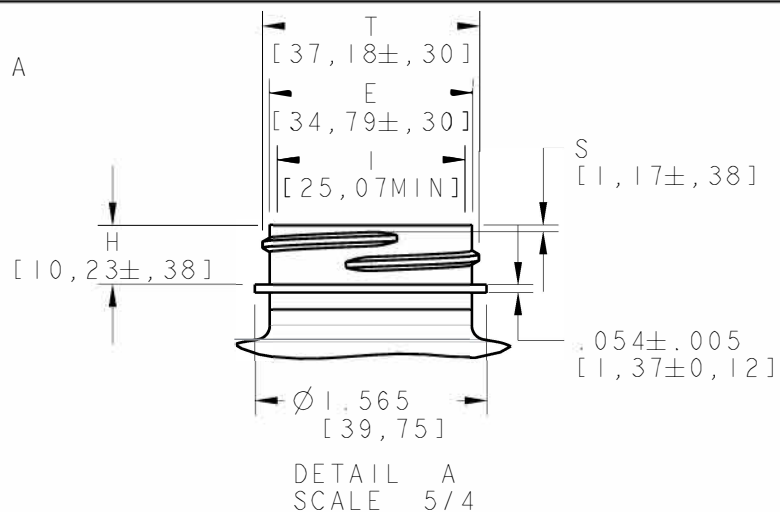
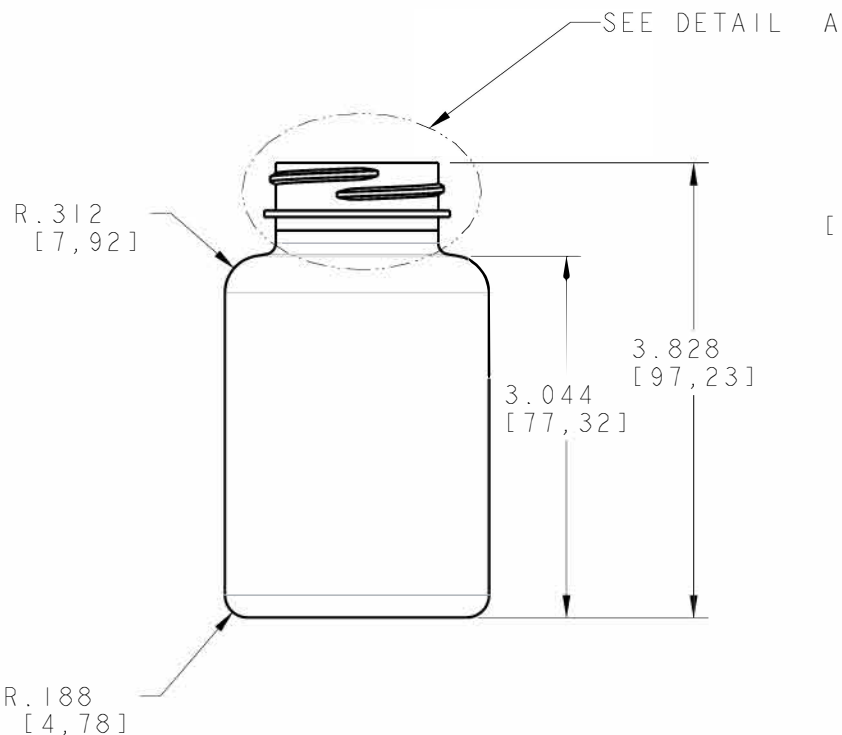
WE HAVE A PRODUCT FOR YOU

Part #: 30WPG4



The
CARYCOMPANY
Est. 1895

1195 W. Fullerton Ave. | Addison, IL 60101 | T: 630.629.6600 | F: 630.629.3690 |



Neck Finish:		DISCLAIMER: The Cary Company assumes no responsibility for form, fit and function of closures, accessories, and/or shelf life and compatability of intended contents with this bottle.				
	Min Thk	Color	Weight	Std. Pack	Revisions	The CARY COMPANY <small>Est. 1895</small>
All measurements are in inches	.012[.30]	All Colors	24 Gms±3	420,Stack	A Add Metric 5/3/10.sct	
	.012[.30]	All Colors Heavy Gram	26 Gms±3	420,Stack	B Add 26g 9/4/13.sct	
					C REVISED BASE ENGRAVING 12/11/19 ZAJ	
Neck Dimensions:					Tolerance: Where not shown Decimal ±0.050 Angular ±1°	Scale: 1/1 Drawn By: SCT Date: 08-02-03 Dwg Rev:
T = 1.464±.042 E = 1.370±.012 H = .403±.015 I = .987 MIN S = .046±.015					Material: PET	Approved By: SJ Drawing NO: 175S38PET 175PMIWS38L400
Overflow Capacity: 191 ml ± 6						