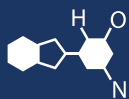


IF YOU...



MIX IT. FILL IT. PACK IT. SHIP IT.

WE HAVE A **PRODUCT** FOR YOU

Part #: 30WS1X



The
CARYCOMPANY
Est. 1895

1195 W. Fullerton Ave. | Addison, IL 60101 | T: 630.629.6600 | F: 630.629.3690 |

1USG Can Specifications

Approval Date:
25/Mar/2021

Recent Update & Version
25/Mar/2021 & B

Product Code:
610711-W-PO

ISO Document Code:
PD610711-W-1N

Product Description:
1 Gallon Can (610X711) Plain Inside/Plain Outside

Recommended Use:
Solvent-based chemical products packaging

Can Body Specifications

Material

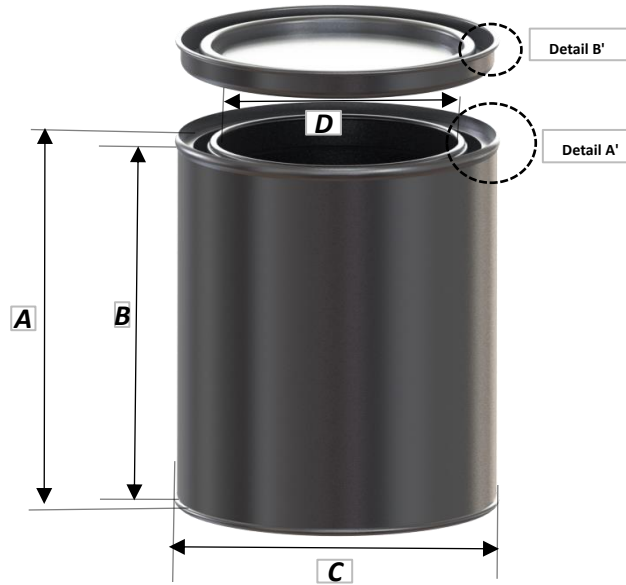
Steel	MR Type
Thickness	0.2mm
Temper	T4
Coating	ETP
Quantity of Coating	E2.8/2.8

Dimensions (mm)

Can Height (A)	194.5 (+/-0.5)
Label Height (B)	187.5 (+/- 0.5)
External Diameter(C)	168.5 (+/-0.5)
Internal Diameter (D)	140.35 (+/- 0.3)

Coating

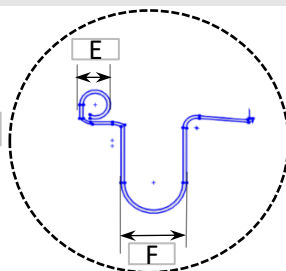
Interior	Plain
Exterior	Plain



Ring Profile Dimensions (mm)

Curling (E)	2.1 (+/-0.2)
Width (F)	4.5 (+/-0.2)

Detail A'

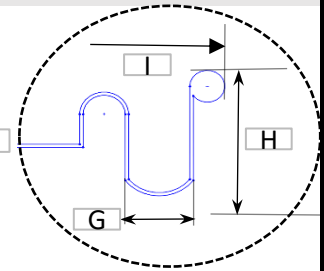


Sealant:
Water-base

Lid Profile Dimensions (mm)

Width (G)	4.5(+/- 0.25)
Height (H)	9.2 (+/- 0.5)
Ext Dia (I)	157.75 (+/- 0.5)

Detail B'



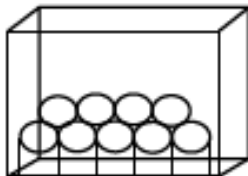
Sealant:
Water-base

Packaging Information

Boxed

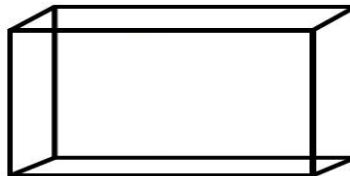
Box Size:

Length	27"
Width	20"
Height	24"



Cans	36
Lids	36
G.W:	14 Kg
N.W:	12 Kg

Bulk (On Pallets)



Lids	336/box
G.W	19Kg
N.W	18Kg

Box Size: 19"X19"X11.5"

336 Cans/Pallet

Pallet Size:
56"X44"X52"

G.W. 106 Kg

N.W. 96 Kg

In Truckload (53 ft)

13440 Cans

13440 Lids

Total Weight: 5000Kg