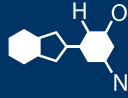


# IF YOU...



MIX IT. FILL IT. PACK IT. SHIP IT.

# WE HAVE A **PRODUCT** FOR YOU

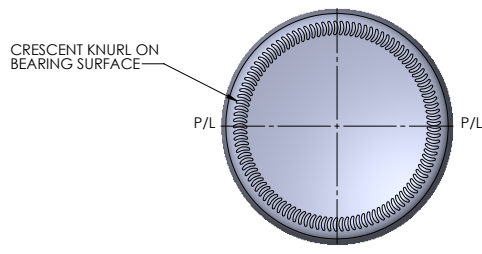
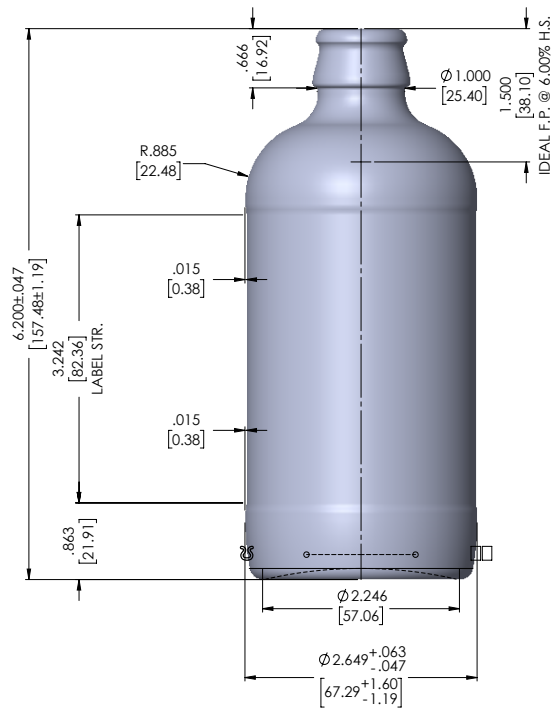
Part #30WSTC

Beer Bottles

12 oz. (355 ml) Amber Glass Stubby Beer Bottles,  
Pry-Off Crown, 26-611, 24/cs



The  
**CARY**COMPANY  
Est. 1895



1. NOTE:  
SPECIAL CAPPING CHUCK REQUIRED FOR THIS DESIGN.

2. CAUTION:  
THIS CONTAINER IS DESIGNED TO HOLD UP TO AND INCLUDING (3) VOLUMES MAX. CARBONATION WITH TUNNEL PASTEURIZATION AT 145° F MAX., (4) VOLUMES MAX. CARBONATION WITHOUT TUNNEL PASTEURIZATION

REQUIRED INDICA  
1. TRADEMARK  
2. CAVITY NO.  
  
PLACE ON HEEL  
AND OR BOTTOM

REV.	DATE	DESCRIPTION	DESIGNER
F	5/20/16	UPDATED MAXIMUM CARBONATION NOTE TO INCLUDE TUNNEL PASTEURIZATION AT 145° F MAX. FOR 3 VOLUMES OF CARBONATION AND ADDED 4 VOLUMES MAXIMUM CARBONATION WITHOUT TUNNEL PASTEURIZATION TO NOTE PER QUALITY	JC
E	6/24/15	F.P. WAS AT 1.390, CHANGED PER UNIT SAMPLE	JC
D	4/23/15	WEIGHT WAS 5.875 OZ. PER MOLD ENG., 2.649 DIA. WAS 2.634, 2.552 DIA. WAS 2.537, 2.246 DIA. WAS 2.231	JC
C	2/26/15	CHANGED CUSTOMER NAME TO STOCK PER SALES	JC
B	1/22/15	UPDATED DRAWING TEMPLATE, REMOVED .063 FLAT AND .625 RAD. IN BOTTOM, ADDED BOTTOM LETTERING NOTE PER MOLD ENGINEERING	JC
A	11/24/14	ASSIGN CONTAINER NUMBER	JC

PROCESS: <b>NNPB</b>			
THE INFORMATION CONTAINED HEREIN IS PROPRIETARY, IS PROVIDED IN CONFIDENCE AND SHALL NOT BE DISCLOSED OR COPIED, IN WHOLE OR IN PART, WITHOUT THE WRITTEN PERMISSION OF ARDAGH GROUP			
CONT. TYPE: <b>STOCK</b>	FINISH: 26-611		
DESCRIPTION: <b>B 12 OZ STUBBY</b>			
CUSTOMER NAME: <b>STOCK</b>			
O. F. CAP. 12.72 fl. Oz. [376.17 ml]			
F. P. CAP. 12.00 ± .188 fl. Oz. [354.87 ± 5.56 ml]			
GLASS WT. 6.25 ± .313 Oz. [177.20 ± 8.87 g]			
DESIGNER: Jon Crowe			
DATE: 07/30/2014	CD NO.	DWG NO. <b>T-18104</b>	CONTAINER NO. <b>6023012</b>

BOTTLE TO BOTTLE CONTACT CLEARANCE	DECORATION: .000 / [0]	LETTERING: .005 / [.28]	DOT CODE: .026 / [.86]
------------------------------------	------------------------	-------------------------	------------------------

TIP ANGLE EMPTY = 25.61° + REF. 5575012, T-17385