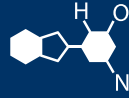


IF YOU...



MIX IT. FILL IT. PACK IT. SHIP IT.

WE HAVE A **PRODUCT** FOR YOU

Part # 37BB27

Flammable Safety Cabinets

Sure-Grip® EX Flammable Safety Cabinet,
60 Gallon, Bi-Fold S/C Doors, Red



The
CARY COMPANY
Est. 1895

1195 W. Fullerton Ave. | Addison, IL 60101 | T: 630.629.6600 | F: 630.629.3690 | TheCaryCompany.com

TECHNICAL DATA SHEET

Regulatory Approval/Code Reference:

OSHA 29 CFR 1910.106(e)(2)(ii)(b):	Incidental storage or use of flammable and combustible liquids
OSHA 29 CFR 1910.106(d)(3)(i&ii):	Design, construction, and capacity of storage cabinets - (i) Maximum capacity
International Fire Code	3404.3.2 - Liquid storage cabinets, 3404.3.2.1.1- Material 3404.3.2.1.2 - Labeling, 3404.3.2.1.3 - Doors, 3404.3.2.1.4 Bottom
NFPA 1, The Uniform Fire Code -2006 Edition	60.1.2.23 Hazardous Materials Storage Cabinets
NFPA Code 30 - 2008 Edition	Chapter 9
The National Fire Code of Canada (NFC) 1995 Edition	Section 4.2.10.5 references storage cabinets must conform to ULC-C1275
FM Global	ULC/ORD-C1275-84
FM Global	#6050
FM Global	FM APPROVED

Capacity:	60 GAL (227L) 96GAL (363L) BI-Fold Cabinet
Exterior Dimensions (H x W x D):	65.25 x 34.00 x 34.00 (1657 mm x 864 mm x 864 mm)
Interior Dimensions (H x W x D):	61.14 x 30.83 x 30.83 (1553 mm x 783 mm x 783 mm)
Door Opening Dimensions (H x W):	59140 x 30.65 (1502 mm x 779 mm)
Material Specifications:	Cabinet architecture is 18ga steel thought, with fully welded construction. 2" leak tight sump, continuous door hinge Galvanized spill slope shelves Powder coat finish: 2.4 to 2.5 mills avg.
Package Dimensions (H x W x D):	70.00 x 38.00 x 38.00 (1778 mm x 965 mm x 965 mm)
Spill Containment Sump:	8.30 GAL. (31.44 L)
Estimated Ship Weight:	374 LBS. (169.6 KG)
Number of Shelves:	2 - 60 Gallon - 5 - 96 Gallon
Shelf Load:	350 LBS. (159 KG)

Standard color options:

Yellow	Red	Blue	Green
Silver	Snow White	Light Neutral	Gray

Shelf Information/Optional

Shelf Cans Per Shelf: *see CANS PER SHELF DOCUMENT

29944	Shelf	29961	Poly Tray	29980	Shelf/Poly Tray Combo
29952	Chemcor Shelf				

Chemcor cabinets do not come with poly trays included.

Cabinet Cover

25989	60 Gallon Cabinets -Yellow
-------	----------------------------

Replacement Parts

25902	LEVELER FOOT FOR CABINETS	29129	S HOOK FOR SELF-CLOSE CABINETS
25917	VENT ADAPTOR ASSY W/O PLUG	29157	EX REPLACEMENT HANDLE
25918	CABINET CYLINDER REPAIR KIT	29213	REPLACEMENT BULLET LATCH
25919	CABINET CYLINDER	29988	FUSIBLE LINK ASSEMBLY
25921	LABEL-CORROSIVE-7" X 12"	29925	PLUGS 2" (SET OF 2) CAB
25926*	SELF CLOSING CONV KIT	29989	FUSIBLE LINK+ EX/SG KEY SET
25952	LEVELER FOOT KIT - SET OF 4	29127B	CORVEL BLUE PAINT TOUCH-UP
25971	FRENCH FLAM LBL KIT	29127G	GRAY PAINT TOUCH-UP
25972	FRENCH ACID LBL KIT	29127L	TOUCH UP PAINT LIGHT NEUTRAL
25998	KEY SET (2) CHS45 SUREGRIP HANDLE	29127P	PAINT TOUCH-UP-PESTICIDE
29002	LBL HAZ ALERT FLAMMABLE LG	29127R	RED PAINT TOUCH-UP
29003	LBL HAZ ALERT FLAM BAND LG	29127S	TOUCH UP PAINT SILVER
29006	LBL HAZ ALERT ACID LG	29127W	WHITE PAINT TOUCH-UP
29007	LBL HAZ ALERT ACID BAND LG	29127Y	YELLOW PAINT TOUCH-UP
25968	PASS THRU SYSTEM	25973	NITROGEN SIDE PASS THRU SYSTEM

*Any modification to a cabinet will void any FM Approval and warranty

Optional Parts

25920	(KB) GRAVITY CONVEYOR #174	25974	NITROGEN SIDE PASS THRU SYSTEM- INSTALLED
25932	DRUM RAMP ASM	50963A	MASTER LOCK 5 TPF (2 PER SET)
25969	PASS THRU SYSTEM - INSTALLED	84000	SEISMIC BRACKET KIT - FLOOR/WALL

Replacement Doors

NO REPLACEMENT DOORS AVAILABLE

List of Cabinets sku's

60 Gallon Cabinets

896080	60G CAB BI YL FLAM SAFE EX
896081	60G CAB BI RD FLAM SAFE EX
896082	60G CAB BI BL ACID SAFE EX
896091	120G CAB BI RD SAFE EX

Chemcor Lined Acid Cabinet Option

ChemCor® Lined Safety Cabinets Unique, flame-coated thermoplastic liner offers superior corrosion protection, combined with the fire protection and durability of our steel safety cabinets!

• **100% seamless sprayed on liner** on all interior walls, ceiling, sump, inside doors and shelves protects exposed cabinet surfaces from rust and corrosion. Seam-free surface eliminates the need for rivets or fasteners which risk corrosion from seep-through chemicals. **Non-porous surface** resists staining and cleans-up easily.

• **Dual-benefits/Multi-use** - complete protection from harsh acids and corrosive chemicals - plus the durability, fire protection and code compliance of Justrite's steel safety cabinets. Two colors to complement laboratory settings: stainless steel-like silver or popular light blue

Cabinets Chemcor Lined

	Acid Cabinets
8960022	60G CAB MAN BL ACID PLIN EX
8960222	60G CAB SC BL ACID PLIN EX
8960822	60G CAB BI BL ACID PLIN EX

CHEM-COR LINED MATERIAL CAN BE INSTALLED IN ANY CABINET, CONTACT CUSTOMER SERVICE FOR INFORMATION.