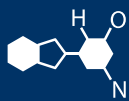


IF YOU...



MIX IT. FILL IT. PACK IT. SHIP IT.

WE HAVE A PRODUCT FOR YOU



Part #	37BCS7
Color	Clear
Material	PUR
Dimensions	48"L (1220mm) x 48"W x (1220mm) x .375"H (9.5mm)
Weight	36 lbs. (17 kg)
Case Pack	1 ea.
Pallet Pack	42 ea.

Ultra- Drain Seal Clear®

Product Data Sheet

Item Name: Ultra- Drain Seal Clear®

Item #	Color	Misc. Features	Amount	Length	Width	Height	Weight
2200	Clear	Square	1 Each	18" (458mm)	18" (458mm)	.375" (9.5mm)	5 Lbs. (2.5 Kg)
2201	Clear	Square	1 Each	24" (610mm)	24" (610mm)	.375" (9.5mm)	8 Lbs. (3.5 Kg)
2202	Clear	Square	1 Each	36" (915mm)	36" (915mm)	.375" (9.5mm)	20 Lbs. (9 Kg)
2203	Clear	Square	1 Each	42" (1067mm)	42" (1067mm)	.375" (9.5mm)	23 Lbs. (10.5 Kg)
2204	Clear	Square	1 Each	48" (1220mm)	48" (1220mm)	.375" (9.5mm)	36 Lbs. (17 Kg)
2205	Clear	Square	1 Each	54" (1372mm)	54" (1372mm)	.375" (9.5mm)	41 Lbs. (18.5 Kg)
2206	Clear	Rectangular	1 Each	18" (458mm)	58" (1474mm)	.375" (9.5mm)	16 Lbs. (7 Kg)
2207	Clear	Rectangular	1 Each	36" (915mm)	58" (1474mm)	.375" (9.5mm)	26 Lbs. (12 Kg)
2208	Clear	Circular	1 Each	12" Diameter (305mm)		.375" (9.5mm)	3 Lbs. (1.5 Kg)
2209	Clear	Circular	1 Each	20" Diameter (508mm)		.375" (9.5mm)	6 Lbs. (3 Kg)
2210	Clear	Circular	1 Each	30" Diameter (762mm)		.375" (9.5mm)	11 Lbs. (5 Kg)
2211	Clear	Circular	1 Each	42" Diameter (1067mm)		.375" (9.5mm)	27 Lbs. (9 Kg)

Description: A non-absorbing urethane pad that forms a temporary bond with drains to stop leaks from entering the drain.

Application: For use in response to machine leaks and small chemical spills. They can be quickly deployed to seal floor or storm drains until the spill or leak can be cleaned in accordance with local and state regulations.

Product Features: The Ultra- Drain Seal is an essential part of your spill response kit that can be quickly deployed to seal drains and prevent spills or leaks from going down the drain.

- Clear material provides unobstructed view of covered drains – enables responders to make sure a complete seal is made.
- No more guess work about Drain Seal effectiveness – quickly see if spills are entering the drain through cracks in the surface, imperfections in the grating, or other irregularities that can break the seal.
- Reinforcing mesh is sandwiched between layers of polyurethane – increases durability and resistance to tearing.
- Unique, urethane construction allows the pad to deform and seal off most drains – temporarily seals to any smooth surface.
- Helps comply with SPCC and NPDES.

Composition: 100% polyurethane.

Material Specifications:

Specification	Value	
Style	Pad (Square/ Circular/ Rectangular)	
Color	Clear	
Intended For	Storm and Floor Drains	
Max Liquid Temp Exposure	225°F for up to 30 minutes	107.2°C for up to 30 minutes
Storage Temp Range	0°- 120°F	-17.7° - 48.8°C
Temperature Limit	0°- 160°F	-17.7° - 71.1°C
Sold As	1 each	
Composition	Polyurethane	

Chemical Compatibility for polyurethane

Chemical	Swelling	Degradation	Grade
Acetone	2	0	D
Acetonitrile	1	0	C
Aluminum Salts	0	0	A
Barium Salts	0	0	A
Benzyl Alcohol	1	1	C
Boric Acid	0	0	A
Butanol	0	0	A
Calcium Chlorite	0	0	A
Carbon Disulfide	1	0	C
Cupric Chloride	0	0	A
Cyclohexanone	1	2	D
Dichloromethane	2	2	D
Diethylamine	1	1	C
Diethylformamide	2	2	D
Ethyl Acetate	1	0	C
Formaldehyde	0	0	A
Gasoline	0	0	A
Glycol Ether	0	0	A
Hexane	0	0	A
Hydrochloric Acid (37%)	0	2	D
Hydrogen Peroxide (30%)	1	0	C
Hydrofluoric Acid (48%)	0	2	D
Jet Fuel (JP-5)	0	0	A
Kerosene	0	0	A
Methanol	0	0	A
Methyl Ethyl Ketone	2	0	D
Mineral Oil	0	0	A
Naphtha	0	0	A
Nitrobenzene	0	2	D
Phenol	0	2	D
Propylene Glycol	0	0	A
Sodium Hydroxide (50%)	0	0	A
Sulfuric Acid (98%)	0	2	D
Sulfuric Acid (50%)	0	2	D
Tetrachloroethylene	0	0	A
Tetrahydrofuran	2	2	D
Toluene	1	0	C
1,1,1-Trichloroethane	1	0	C
Trichloroethylene	1	0	C
Triethylamine	0	0	A
Turpentine	0	0	A
Water	0	0	A

KEY

Swelling

Degradation

Ratings

Visually rated from 0-2; Visually rated from 0-2; NR (Not Recommended):

0 = none	0 = none	Significant degradation or swelling
1 = slight	1 = slight	FAIR: Slight swelling
2 = significant	2 = significant	GOOD: No swelling

***IMPORTANT USER NOTICE FOR BOTH THE POLYURETHANE
& POLYETHYLENE CHEMICAL COMPATIBILITY GUIDES**

The data contained herein is a compilation of existing published data from leading manufacturers of polyurethane and does not represent actual testing performed by UltraTech International, Inc.

This listing is offered only as a guide and utilizes information which, to the best of UltraTech's knowledge, is accurate and reliable. Due to variables and conditions of application beyond the control of UltraTech, none of the data shown in this guide is to be construed as a guarantee, expressed or implied. UltraTech International, Inc. assumes no responsibility, obligation or liability in conjunction with the use or misuse of the information herein.