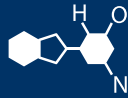
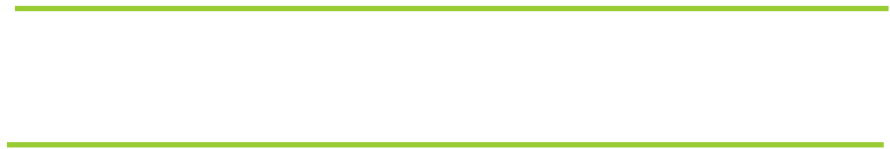


# IF YOU...



MIX IT. FILL IT. PACK IT. SHIP IT.

# WE HAVE A PRODUCT FOR YOU



Part #	37BDG2
Color	Black
Durability	Standard
Dimensions	48"L x 36"W x 18"H(1220 mm x 915 mm x 458mm)
Model	UltraTech 9218



# Ultra-Drain Guards<sup>®</sup>

## Specifications

### Material Specifications

Properties	ASTM Test	Value
<b>Material: Non-woven, Polypropylene Geotextile</b>		
Grab Tensile	D 4632	205 lbs
Elongation	D 4632	50%
Trapezoid Tear	D 4533	80 lbs
Puncture	D 4833	525 lbs
CBR Puncture	D 6241	600 lbs
Mullen Burst	D 3786	420 psi
Permittivity	D 4491	1.5 sec <sup>-1</sup>
A.O.S. (U.S. sieve no.) / Microns	D 4751	80 / 180
UV Stability (strength retained %) 500 hrs	D 4355	70%
Fabric Weight (oz/yd <sup>2</sup> ) (typical)	D 5261	8 oz/yd <sup>2</sup>
Flow (through material)	D 4491	90 gpm/ft <sup>2</sup>
Flow (bypass ports gpm) *		770 gpm
Flow (bypass ports cfs) *		1.7 cfs

\* Larger bypass flow rate designs are available



### Unit Specifications

Model	Oil Capture (Gal)	Sediment Capture (lbs)	Collection Area (dia x depth)	Flow Rate (gpm)	Dimensions
Oil & Sediment <sup>2</sup> Part # 9217	.87	40	10" x 18"	500	48" x 36" x 18"
Oil & Sediment <sup>2</sup> Part # 9356	1.55	40	10" x 18"	900	60" x 60" x 18"
Oil & Sediment Plus <sup>2</sup> Part # 9219	1.38	40	10" x 18"	500	48" x 36" x 18"
Oil & Sediment Plus <sup>2</sup> Part # 9358	2.06	40	10" x 18"	900	60" x 60" x 18"
Trash & Debris Part # 9227	----	40	10" x 18"	500	48" x 36" x 18"
Ultimate <sup>3</sup> Part # 9376	1.57	40	10" x 18"	500	48" x 36" x 38"
High Capacity Part # 9393	1.9	300	24" x 24"	1000	60" x 60" x 24"
Adjustable Frame Model Part # 8930	1.26	40	10" x 18"	500	Varies