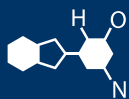


IF YOU...



MIX IT. FILL IT. PACK IT. SHIP IT.

WE HAVE A PRODUCT FOR YOU



Double Gas Cylinder Hand Truck, 10.5"
Pneumatic Wheels. Rear Casters

Product Category: Gas Cylinder Hand Trucks

Part #	37BF72
Capacity	2-Cylinder
Color	Gray
Material	Steel
Dimensions	47" L x 32" W x 20" H
Case Pack	1 ea.
Case Dimensions	31" L x 32" W x 17" H
Case Weight	68 lb
Country of Manufacture	United States
Model	3502
Weight	65 lb