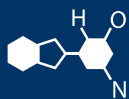


# IF YOU...



# MIX IT. FILL IT. PACK IT. SHIP IT.

## WE HAVE A PRODUCT FOR YOU

Part # 37BK49

Combination Units

Combination Safety Shower w/ Eyewash Station,  
Floor Mount, Open Stainless Steel Bowl,  
Stainless Steel Pipe, Top Inlet



shown with optional treadle

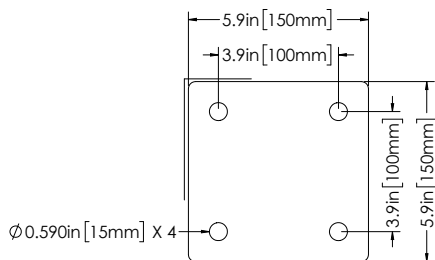
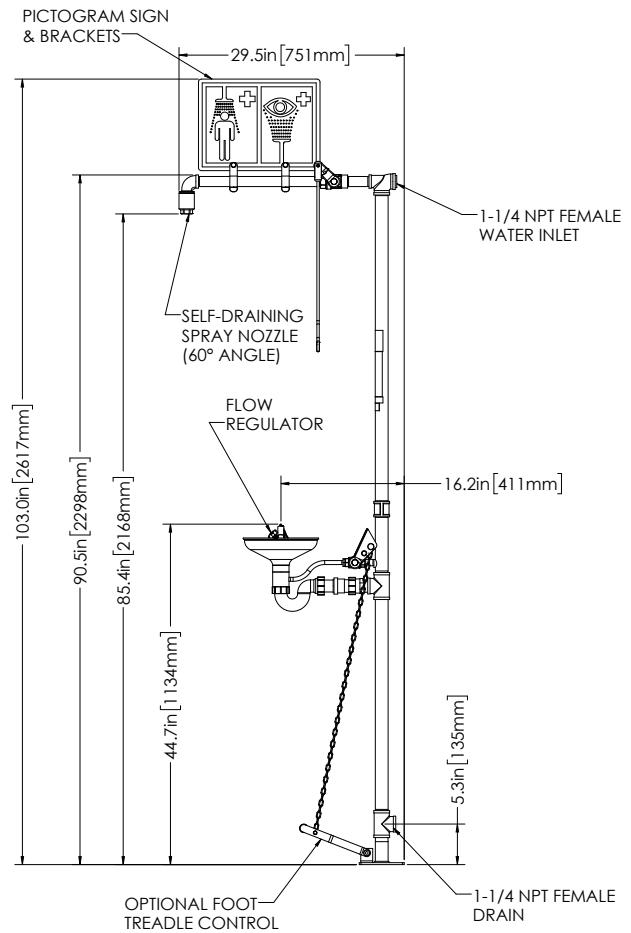
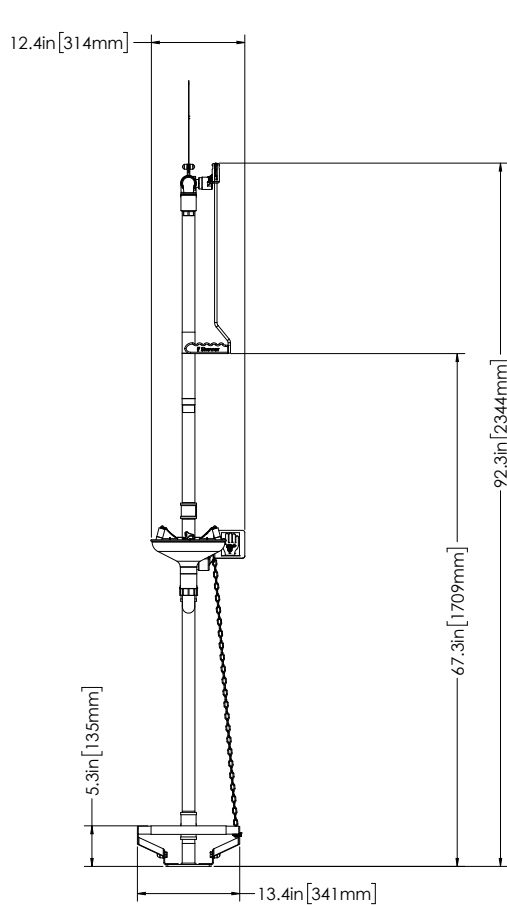
The  
**CARY** COMPANY  
Est. 1895

1195 W. Fullerton Ave. | Addison, IL 60101 | T: 630.629.6600 | F: 630.629.3690 | [TheCaryCompany.com](http://TheCaryCompany.com)

**18G85G**  
**18GS85G**

Product Data Sheet - G.A. Drawings

*Indoor Emergency Safety Shower Type: Combination*



FLOOR MOUNTING PLATE VIEW  
(MOUNTING HARDWARE NOT INCLUDED)

VARIATIONS IN MANUFACTURING AND ASSEMBLY  
ALLOW FOR ±1/8 IN [3MM] PER THREADED JOINT.