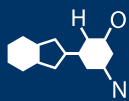


# IF YOU...



# MIX IT. FILL IT. PACK IT. SHIP IT.

## WE HAVE A PRODUCT FOR YOU

Part # 37BK81

Combination Units

**Freeze Protected Combination Safety Shower  
w/ Eyewash Station, Floor Mount, Closed ABS Bowl,  
Galvanized Pipe, 240v, C1D2**



shown with optional treadle

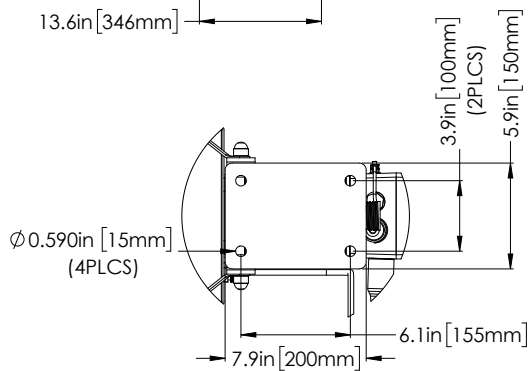
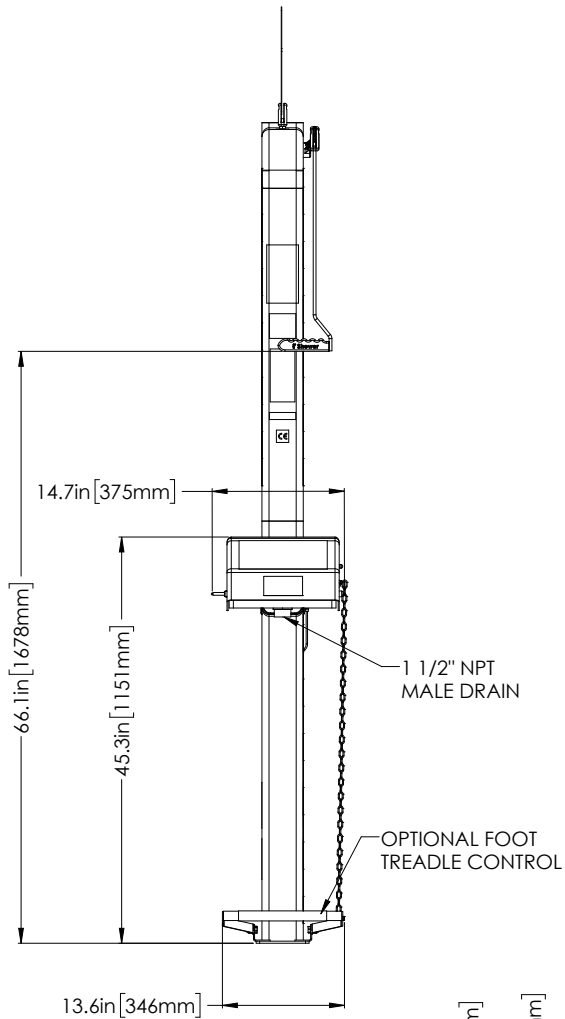
The  
**CARY** COMPANY  
Est. 1895

1195 W. Fullerton Ave. | Addison, IL 60101 | T: 630.629.6600 | F: 630.629.3690 | [TheCaryCompany.com](http://TheCaryCompany.com)

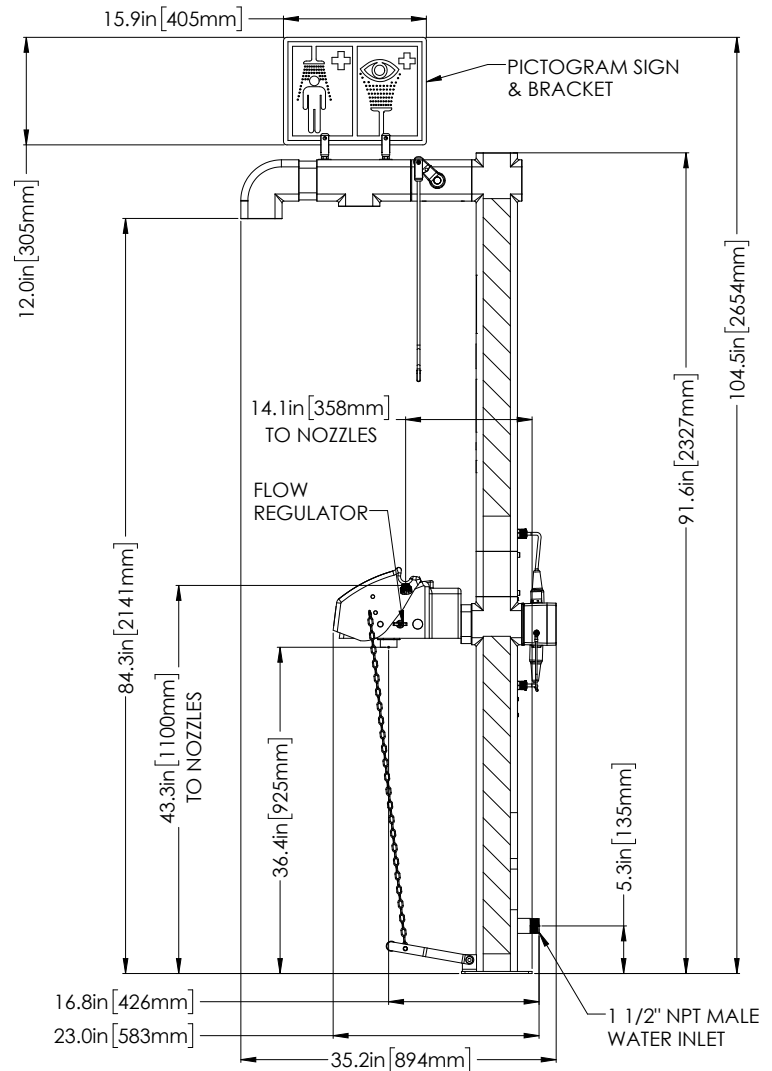
**H5G45G-1H, H5GS45G-1H  
H5G45G-2H, H5GS45G-2H**

Product Data Sheet - G.A. Drawings

**Outdoor Emergency Safety Shower Type: Freeze Protected, Combination**



MOUNTING PLATE VIEW  
(MOUNTING HARDWARE NOT INCLUDED)



VARIATIONS IN MANUFACTURING AND ASSEMBLY  
ALLOW FOR  $\pm 1/8$  in [3 mm] PER THREADED JOINT.