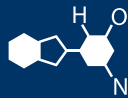


IF YOU...



MIX IT. FILL IT. PACK IT. SHIP IT.

WE HAVE A **PRODUCT** FOR YOU

Part #38B753

55 Gallon Drum Turbine Tube Mixers

**55 Gallon Drum Tube Mixer w/40" 316 Stainless Steel
Tube, Air Motor, 1000 cps (TT Series)**

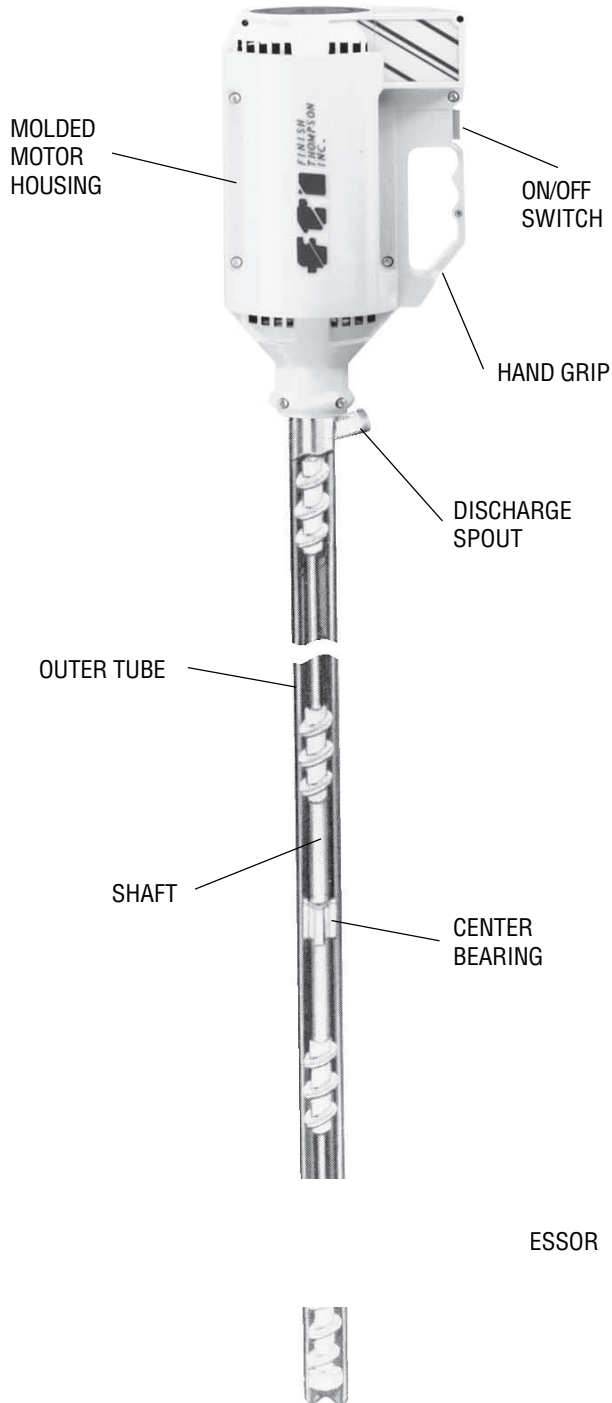


The
CARYCOMPANY
Est. 1895

TT Series

DRUM PUMPS

Medium Viscosity



The TT series pumps are ideal for corrosive chemicals or solvents, flammables, and applications requiring high purity or sanitary construction. Designed for semi-viscous liquids, inks, detergents, vinegar, and motor oils are a few typical uses.

Features

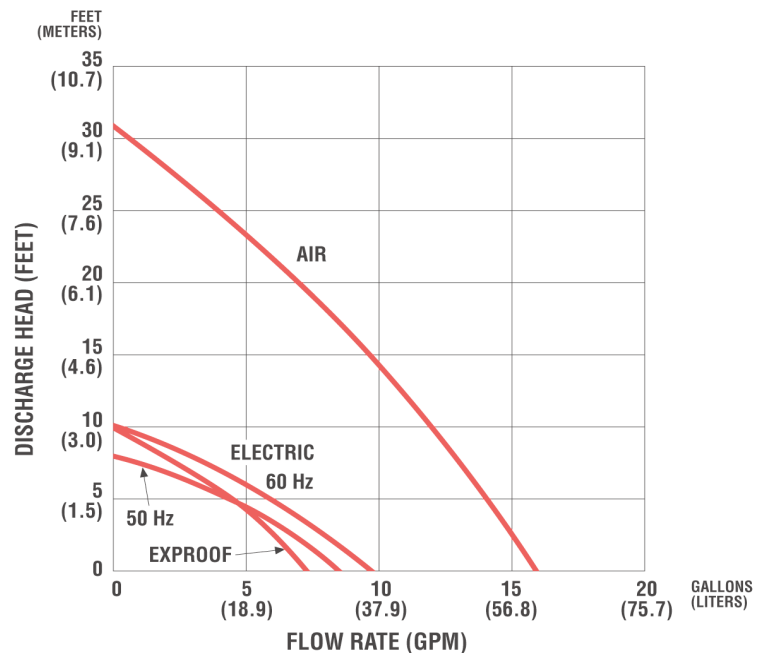
- Sealed
- Handles mild corrosives, solvents and flammables
- Tube interchangeable with motors
- CPVC, stainless steel or USDA sanitary constructions

Performance

- 1.8 specific gravity
- Maximum 150°F (66°C)

ELECTRIC - 60 HZ	50 HZ
• 10 gpm (38 lpm)	• 7 gpm (26.5 lpm)
• 10 feet TDH (3 m)	• 8 feet TDH (2.4 m)
• Up to 400 cps	• Up to 400 cps

AIR
• 16 gpm (60 lpm)
• 30 feet TDH (9 m)
• Up to 2,000 cps



NOTE: Above performance based on pumping water

Tube Specifications



TTS TTC STTS

MODEL	TUBE				SEAL	SHAFT	INTERNALS	HOSE SIZE REQUIRED
	MATERIAL	DIA.	LENGTH					
			in.	cm				
TTS	316SS	1-1/2" (3.8 cm)	27 40 48	69 102 122	Graphite filled PTFE	316SS	PTFE	1"
STTS	316SS	1-1/2" (3.8 cm)	40	102		316SS		
TTC	CPVC	1-5/8" (4.1 cm)	27 40 48	69 102 122		Alloy 625		

Motor Specifications



Electric motors are available in 110V or 220V Single Phase, 50-60 Hz. All are equipped with 12 ft. (336 cm) cord, circuit breaker with manual reset, internal cooling fan, and built-in on/off switch. Motors are rated continuous duty.

MODEL	TYPE	CERTIFICATIONS	ELECTRICAL REQUIREMENTS	POWER	RPM
M6*	Air*	CE		1/2 hp	300-6,000
M6X*	Air*	CE		3/4 hp	300-3,000
M7T	TEFC	CSA	110VAC/50-60 Hz	1/4 hp	3450
M7X	Exproof	CSA	110VAC/50-60 Hz	1/4 hp	3450
M8T	IP54	CE	220VAC/50-60 Hz	180 watts	2850

NOTE: When pumping flammables or combustibles, use explosionproof electric or non-electric motors (air motor) on stainless steel tubes with a static protection kit #A100835.

*An air motor is a non-electrical device. This means the possibility of explosion from igniting flammables and combustibles is reduced.



Air motor (M6) shown with regulator valve, muffler. 80-100 psi at 25 cfm.

TM Series

DRUM MIXER

Light to Medium Viscosity

The TM Series Drum Mixer is a 4-blade, turbine drum mixer ideal for mild corrosives, solvents, or flammables of light to medium viscosity.



Features

- Sealed
- Turbine mixing and blending
- Non-aerating, non-vortexing circulation
- Loosens and suspends bottom settlements
- Handles corrosive materials
- Tube interchangeable with choice of motors

Performance

- 14 gpm (53 L/min) circulation
- Up to 1,000 cps
- Maximum 200°F (93°C)

Tube Specifications



MODEL	MATERIAL	TUBE				SEAL	SHAFT	INTERNALS
		DIAMETER		LENGTH				
		in	cm	in	cm			
TMS	316SS	2"	5.1 cm	40	102	Graphite filled PTFE	316 SS	PTFE and 316SS

Motor Specifications



MODEL	TYPE	CERTIFICATIONS	ELECTRICAL REQUIREMENTS	OUTPUT	RPM
M6X	Air*	CE		3/4 hp	300-3,000
M7T	TEFC	CSA	110VAC/50-60 Hz	1/4 hp	3450
M7X	Exproof	CSA	110VAC/50-60 Hz	1/4 hp	3450
M8T	IP54	CE	220VAC/50-60 Hz	180 watts	2850-3450

Electric motors are available in 110V or 220V, Single Phase, 50-60 Hz. All are equipped with 12 ft. (336 cm) cord, circuit breaker with manual reset, internal cooling fan, and built-in on/off switch. Motors are rated continuous duty.

NOTE: When pumping flammables, use explosionproof motors on stainless steel tubes with a static protection kit #A100835

* Non-Electrical operation means the possibility of explosion from igniting flammable gases is reduced.