

# Part#: 44W01W



## ROUND PLASTIC PAIL

**1 Gallon w/ Metal Handle**

**Description:** White

**Liters:** 3.8

**Wall:** 65 mil

**#/Pallet:** 225/pallet



Supplied By: **The Cary Company**

Ph: 630-629-6600

[www.thecarycompany.com](http://www.thecarycompany.com)

# 1H

## PRODUCT SPECIFICATION SHEET

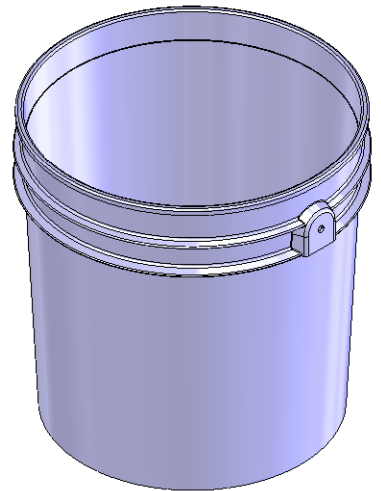
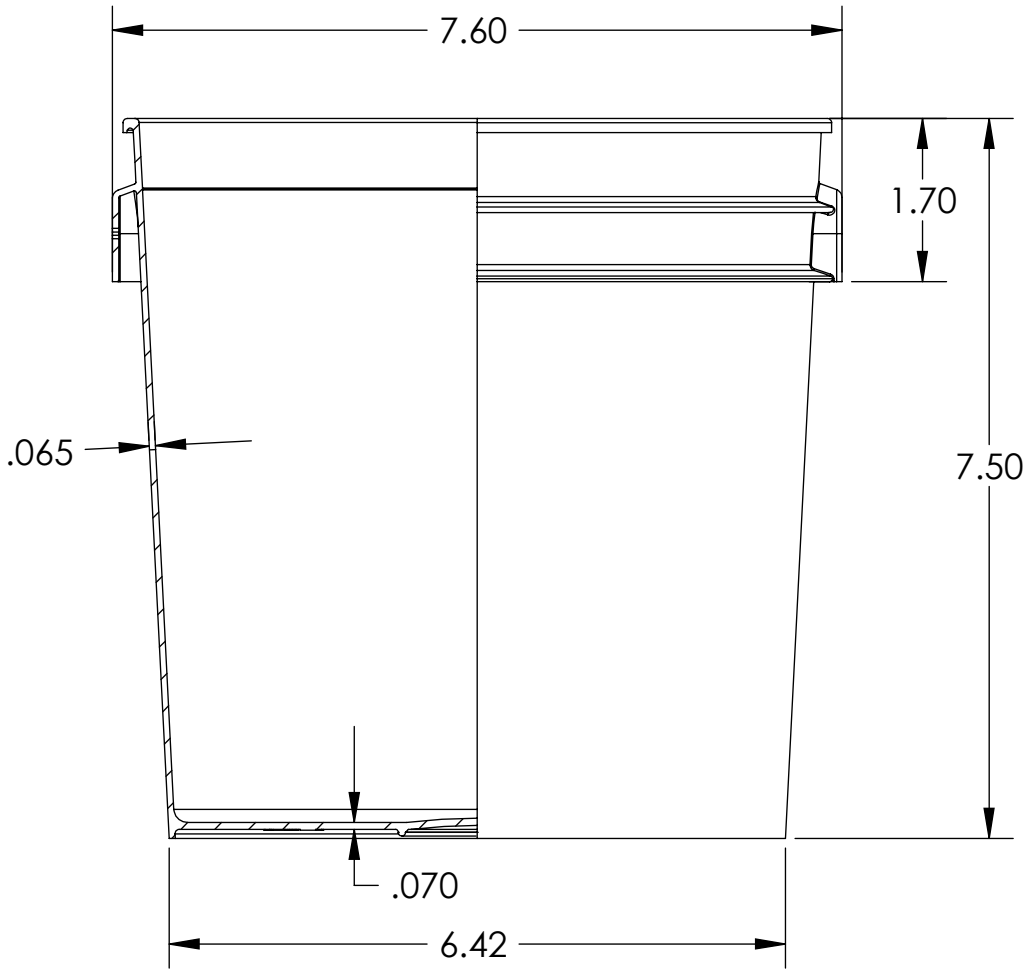
### DIMENSIONS



Supplied By: **The Cary Company**

Ph: 630-629-6600

www.thecarycompany.com



### FUNCTIONAL

<b>REFERENCE WEIGHT</b>	220g
<b>PRINT AREA</b>	3.75" x 19.75"
<b>PRACTICAL FILL VOLUME</b>	1G
<b>OVERFLOW VOLUME</b>	1.11G
<b>COLOR OPTIONS</b>	PLEASE CONTACT SALES ASSOCIATE
<b>COMPATIBLE LIDS</b>	PLEASE CONTACT SALES ASSOCIATE
<b>RESIN</b>	PREMIUM INJECTION GRADE HDPE

NOTE: THIS IS A ONETIME USE SHIPPING CONTAINER USED BY MULTIPLE INDUSTRIES FOR VARIOUS PURPOSES. SUITABILITY PARAMETERS FOR APPLICATIONS VARY. BUYERS ARE RESPONSIBLE TO ENSURE ITS APPLICATION IS COMPATIBLE WITH THE CONTAINER AND FOR THEIR PURPOSES. STANDARD WARRANTY APPLIES.

DATE: 29NOV2010

DWG: SPECP-2001P