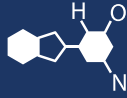


IF YOU...



MIX IT. FILL IT. PACK IT. SHIP IT.

WE HAVE A PRODUCT FOR YOU

Part #: 51BLS3

Baseball Field Supplies

Louisville Slugger Game Time H2O B-Gone Absorbent Clay



The
CARY COMPANY
Est. 1895

1195 W. Fullerton Ave. | Addison, IL 60101 | T: 630.629.6600 | F: 630.629.3690 |

Louisville Slugger® Game Time H2O ABZorb™

Product #MMSD

Product Profile

I. General:

Kiln-dried super calcined and milled natural Montmorillonite Clay (CAS #70892-59-0) with medium bulk density, medium sportive, average surface area and high hardness (low Solubility).

II. Typical Characterization:

Loose Bulk Density..... 38-42 lb/cu. ft.
Specific Gravity 2.2
Moisture Content..... less than 0.2%
Product Porosity 78% (41% capillary pore space,
37% non-capillary pore space)

pH..... 6.0 – 6.5
CEC 33.6
Electrical Conductivity 0.4 mMho/cm
Particle Stability ASTM C-88 Sulfate
Soundness test should not exceed 4% degradation over 20 year period

Screen Size –

+6 MESH 12.85%
+8 MESH 30.08%
+10 MESH 13.64%
+16 MESH 27.80%
+20 MESH 11.18%
+30 MESH 3.44%
+40 MESH 0.49%
+50 MESH 0.12%
+60 MESH 0.02%
+70 MESH 0.02%
-70 to PAN 0.36%



PH 630 629 6600 FX 630 629 3690
1195 W. FULLERTON AVE. ADDISON, IL 60101
WWW.THECARYCOMPANY.COM