

# IF YOU...



MIX IT. FILL IT. PACK IT. SHIP IT.

# WE HAVE A PRODUCT FOR YOU



---

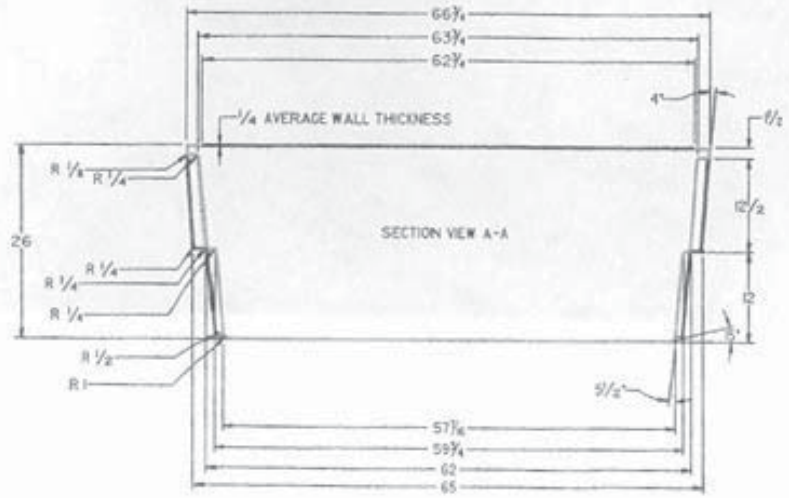
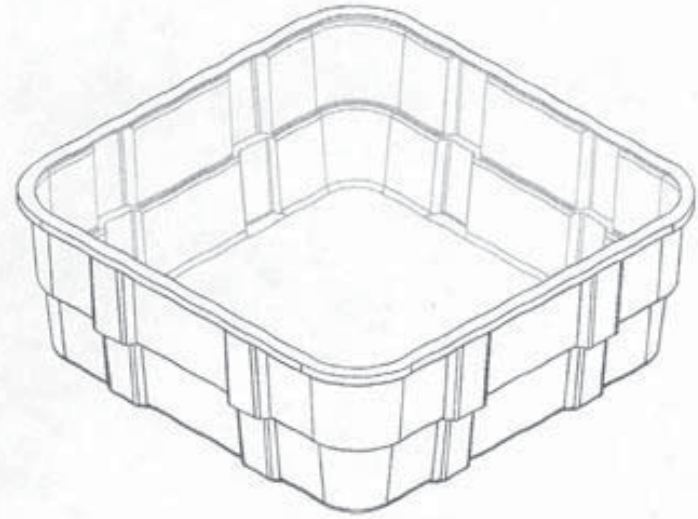
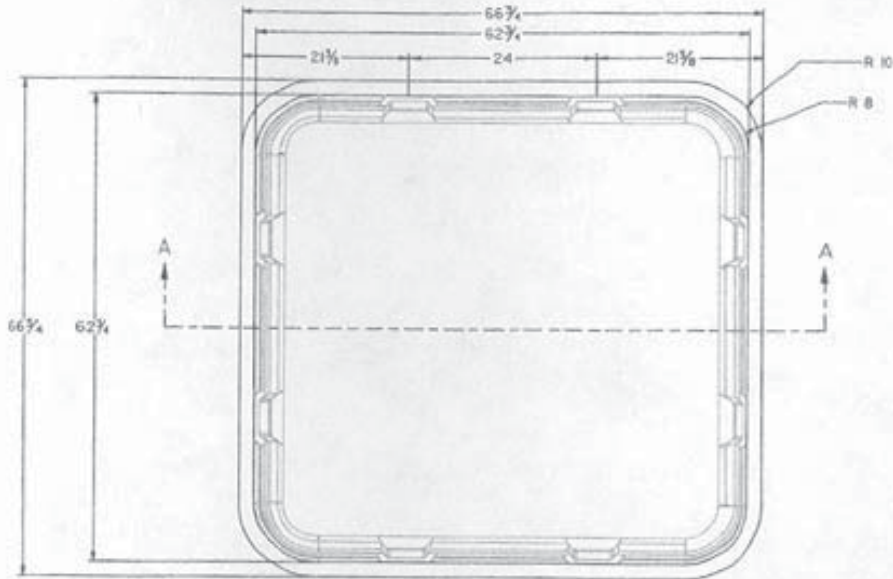
---

|                |                    |
|----------------|--------------------|
| Part #         | 56BHS5             |
| Color          | Yellow/Black       |
| Material       | HDPE               |
| Capacity       | 1-IBC Unit         |
| Spill Capacity | 400 gal.           |
| Load Capacity  | 10,000 lbs.        |
| Condition      | New                |
| Dimensions     | 67"W x 67"D x 26"H |

---

REVISION NO. 1: DATED 2/24/99 D.J.M. ADDED 5" WIDE OUTSIDE VERTICAL RIBS WITH BOTTOM SURFACE ANGLED UP 15 DEGREES FROM FLOOR

ISO APPROVAL FOR 1 REVISION: 799 JF



**THE CARY COMPANY**  
 PH 630-629-6600 - FX 630-629-3690  
 1195 W. FULLERTON AVE. - ADDISON, IL 60101  
 WWW.THECARYCOMPANY.COM

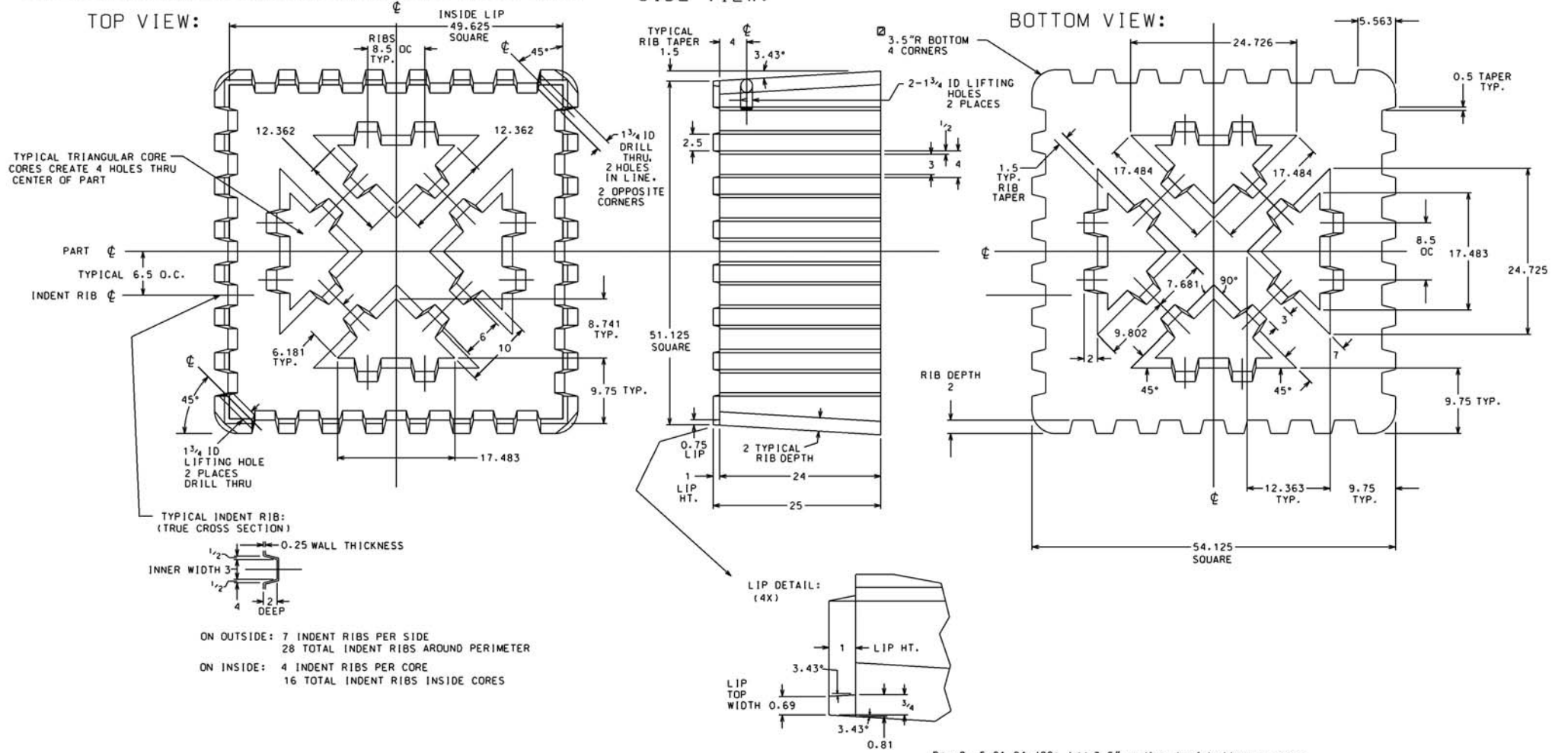
|       |               |        |         |    |
|-------|---------------|--------|---------|----|
| DATE  | SEPT. 4, 1997 | REV    | PD-894  | IT |
| DRAWN | MADE          | BY     | DATE    |    |
|       |               | D.J.M. | 2/24/99 |    |

NOTES:

1. OUTER SIDE WALL RIBS ARE TAPERED 1.5" IN 25" OVERALL HEIGHT. 3.43° DRAFT ANGLE.  
INNER CORE WALL RIBS ARE TAPERED 1.5" IN 24" HEIGHT FROM FLOOR TO IBC TANK SURFACE. 3.58° DRAFT ANGLE.
2. NO RADIII ARE SHOWN ON DRAWING BUT WILL BE  $\frac{1}{8}$ " UOS. ALL DIMENSIONS SHOWN ARE BEFORE RADIII APPLIED.
3. ALL 4 SIDES ARE SAME. ALL 4 TRIANGULAR CORES ARE SAME.
4. MATERIAL: POLYETHYLENE. ROTATIONAL MOLDING GRADE
5. 2 HOLES MUST BE PROVIDED TO INSURE THAT MOLDED PART CAN FILL COMPLETELY WITH LIQUID.
6. 3.5" R AT BOTTOM CORNERS ONLY. RADIUS BLENDS UNIFORMLY DOWN TO  $\frac{1}{2}$ " AT TOP CORNERS.



PH 630-629-6600 - FX 630-629-3690  
 1195 W. FULLERTON AVE. - ADDISON, IL 60101  
 WWW.THECARYCOMPANY.COM



ON OUTSIDE: 7 INDENT RIBS PER SIDE  
 28 TOTAL INDENT RIBS AROUND PERIMETER  
 ON INSIDE: 4 INDENT RIBS PER CORE  
 16 TOTAL INDENT RIBS INSIDE CORES

Rev.2, 5-21-04,JGG: Add 3.5" radius to 4 bottom corners.  
 Rev.1, 5-13-04,JGG: Add 2 lifting holes at 2 opposite corners.