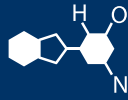


IF YOU...



MIX IT. FILL IT. PACK IT. SHIP IT.

WE HAVE A PRODUCT FOR YOU



Part #	56BHS7
Color	Yellow/Black
Material	HDPE
Capacity	1-Drum Unit
Spill Capacity	15 gal.
Load Capacity	2,000 lbs.
Condition	New
Dimensions	26.25"W x 26"D x 6.5"H

MAINTENANCE AND CARE

UltraTech Polyethylene Spill Containment Products

1. There is no specific need to clean an UltraTech Spill Containment product that has not had a spill or leak as the polyethylene plastic material it is constructed from is designed to last for years in most indoor or outdoor environment. The polyethylene has a UV protective additive for prolonged outdoor exposure.
2. The products are rated for use in temperatures from -40° F to 160° F.
3. The sump area of the product should be inspected weekly for any spills or leaks. If a spill or leak is discovered, it should be cleaned up **within 24 hours**. If inspection shows the sump area has a crack or hole or other damage that could affect the functionality of the unit, it should be **immediately removed from service**.
4. To clean up a spill or a leak, use all safety precautions required for handling the particular chemical involved. Using a safe pumping method for the chemical involved, pump the spilled contents out of the containment sump and into a drum or container for proper disposal or reuse. If the chemical involved is not safe to pump, use absorbents or other means to remove the chemical from the containment sump safely. Dispose of any chemicals, used sorbents or other disposables in compliance with your local or federal regulations.
5. Once the chemical has been removed, use a sorbent mat or pad to wipe down the inside of the containment unit to remove any remaining chemical residue. Finish by washing with soap and water and allow the unit to dry before placing back into service.
6. The unit's grating should be cleaned of any residual chemical and cleaned with soap and water.
7. If the unit had a drain plug that was removed to drain off any chemical or soap/water, be sure to replace the drain plug securely.
8. Ultra-Spill Deck Bladder System special instructions:
 - a. Use a hand pump with a ½" diameter tube and insert the tube into the opening of the bladder from inside the Spill Deck after removing the grate.
 - b. Pump the contents of the bladder and the Spill Deck into a drum or container for proper disposal or reuse.
 - c. If there is some remaining residue inside the bladder, lift the outside end of the bladder and allow the residue to pour back into the Spill Deck sump where it can be pumped out or absorbed with sorbents.
 - d. Remove the bladder from the Spill Deck by uncrewing the bulkhead fitting and dispose of the bladder properly according to local and federal regulations. **DO NOT RE-USE A BLADDER.** After the Spill Deck has been cleaned up, place a new bladder into the Bladder Attachment and attach it to the Spill Deck following the instructions that accompany the replacement bladder.

