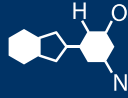


IF YOU...



MIX IT. FILL IT. PACK IT. SHIP IT.

WE HAVE A PRODUCT FOR YOU

Part # 56W55D

Tight Head Plastic Drums

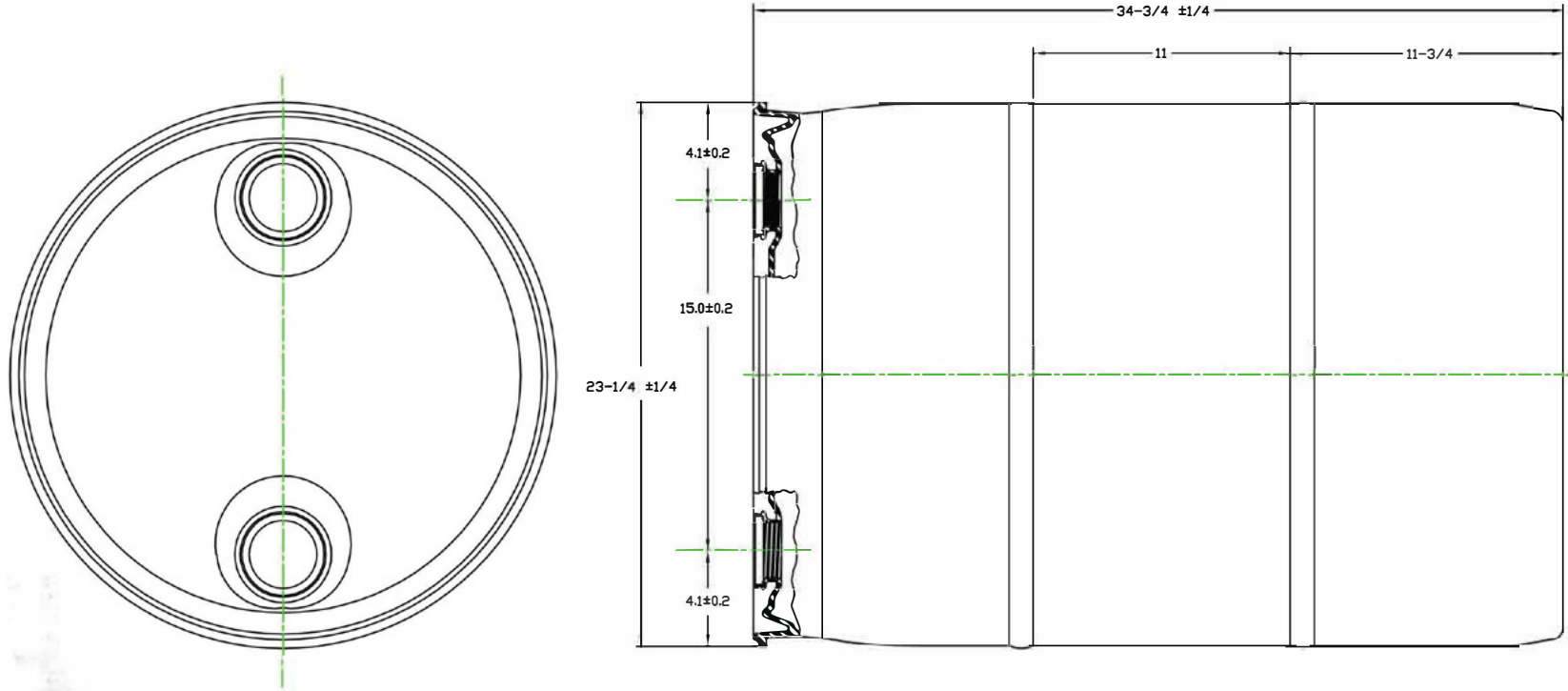
55 Gallon Blue Tight Head Plastic Drum, UN Rated, 2" NPS &
2" Buttress Fittings



The
CARYCOMPANY
Est. 1895

Part #	56W55D
Capacity	55 Gal.
Condition	New
Color	Blue
Material	HMWPE
Closure	Tight Head (Closed)
Min. Wall Thickness	0.087 in. (2.2 mm)
Fittings	2"NPT & 2" Buttress
Gasket	EDPM Rubber Gasket
Ocean Cube (Tweed's Accurate)	10.7 ft ³
Dimensions	23 1/4" (591mm) Dia. x 34 3/4" (883mm)H
Nominal Tare Weight	21.5 lbs. (9.8 kg)
Pallet Pack	8 ea.
Un Rating Liquid	UN1H1/Y1.9/100

REVISION				
REV.	DESCRIPTION	BY	DATE	APPVL.
A	new title block, corrected bung profile	TN	1/08/07	BJ



NOTICE	TOLERANCES							
	BREAK ALL SHARP EDGES UNLESS SPECIFIED	FRAC. ± 1/64	DECIMALS .XX ±.005					
		ANGLES ± 0'30"	.XXX ±.002	.XXXX ±.0005				
	DO NOT SCALE PRINT							
MATERIAL: HDPE	FR. TR.	55 GAL R-S L1 DRUM		DESIGNED:	DATE:	SCALE:	ECN:	CPN:
SHEET: 0F1		STD 2" NPS & BUTT. 'No Optimal Drain'		DRAWN:	DATE:	NONE		
Loc:				B. Geever	5-27-2005	DWG. NO.		
NEXT ASSY:				CHECKED:	DATE:			REV
ALL PARTS MUST HAVE THE DRAWING NUMBER, DATE, AND MANUFACTURER'S I.D. ENGRAVED ON THEM				M. Krock	5-27-2005			A