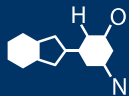
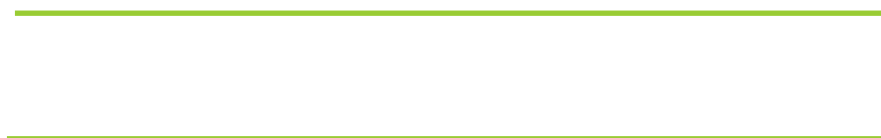


# IF YOU...



MIX IT. FILL IT. PACK IT. SHIP IT.

# WE HAVE A PRODUCT FOR YOU



Part #	56W57E
Neck Width	2"
Color	Natural
Case Pack	500 ea.
Pallet Pack	9,000 ea. (18 Cases)
Model	Rieke® PPA-57-B-5





1195 WEST FULLERTON - ADDISON, IL 60101 - WWW.THECARYCOMPANY.COM - PH. 630-629-6600 - FX. 630-629-3690

Description	PPA-57-B-5-19-143 2" <b>POLY-UISEGRIP®</b> Buttress Plug w/GK096W 500 ctn	
Specification number		
Date	May 23, 2014	Page 1 of 1
Prepared by	Jeff Hess	
Approved by	Lee Olinske	

PARAMETERS	SPECIFICATION	TEST METHOD
Material of construction	Type:- Polyethylene	COA
Standard Color (other colors available upon request)	Natural	QC Spec Visual
Nominal dimensions in inches (mm)	2" pipe size buttress thread with 5 threads per inch, complying to EPA 40 CFR part 165.25	QC Spec Variable/Attribute Gauge
Opening Print Drawing Number	M0982 Rev: C	
Special markings		
Accessories	GK096W White EPDM Gasket	
Applied torque	20 ft-lbs	QC Spec Torque Wrench
Method of delivery	500 /carton (polybagged) - ~ 47 lbs. gross/carton - 16 cartons/pallet	
Components	2" Plastic plug with 3/4" thread reducer and faucet carrier.	Drawing No. 28000580 Rev: G