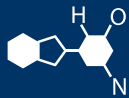


# IF YOU...



MIX IT. FILL IT. PACK IT. SHIP IT.

# WE HAVE A PRODUCT FOR YOU



Part #	56WEZL
Fits	3.5 gal.
Color	White
Material	HDPE
Case Pack	72 ea.
Pallet Pack	1,296 ea. (18 Cases)
FDA Approved	Yes



Supplied By: **The Cary Company**  
Ph: 630-629-6600  
www.thecarycompany.com

## Product Specifications

### 3.5-Gallon EZ STOR® Container with Hinged Cover

#### Multiple Uses

Dry Products

#### Product Codes

Container: **E357**

Description: 3.5-gallon rectangular can

Cover: **E4DH**

Description: Dry seal, tamper-evident, hinged, EZ open & reseal cover

#### Features

Built in hand grips  
Gauge: 65 mil.  
Nominal capacity: 3.5 USG / 13.25 L  
Stack performance: 150 lbs.\*  
Tare weights: Body: 1.17 lbs. / .53 kgs.  
Cover: .42 lbs. / .19 kgs.

Note: \*Ratings will be reduced with uneven load distribution.

#### Specifications with cover

Dimensions: 12"L X 9-15/16"W X 11-5/16"H  
Maximum capacity: 3.75 USG / 14.2 L  
Tare weight: 1.59 lbs. / .72 kgs.\*

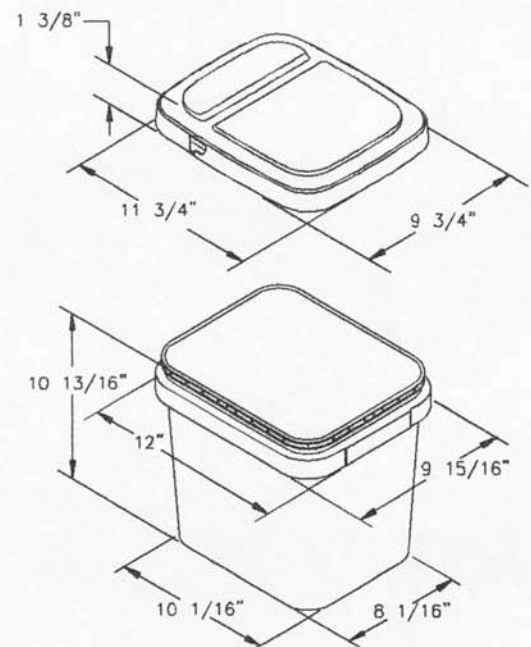
Note: \*With handle, add .10 lbs.

#### Colors

Standard: White, Black and Natural  
Custom: Available at manufacturer's discretion

#### Decorating Options

Four color offset printing  
Print area: 6.5" (top) / 6.5" (bottom) Width  
X 6.25" Height on Long panel  
Print area: 4.75" (top) / 4.5" (bottom) Width  
X 6.25" Height on Short panel  
Sleeve or pressure sensitive labeling



#### Shipping Data

Qty. per pallet: 288  
Gross Weight (lbs./kgs.)\*\*: 337/153  
Den. (lbs./C.F./kgs./m3): 5.9/95.4  
Length (in./cm.): 48.0/121.9  
Width (in./cm.): 40.0/101.6  
Height (in./cm.): 51.0/129.5  
Full truckload quantity  
of 12,672 bodies and 13,440 covers\*\*\*

#### Bodies

#### Covers

#### Filled Containers

1440 (20 boxes of 72)\*  
604.8/273.6  
7.3/119  
47/119.4  
41/104.1  
74/188

64 (16 per layer / 4 layers high)  
Pallet height: 49-11/16"

Note: \*Bulkpack of 1120 also available

\*\*Weight does not include pallet/packaging

\*\*\*Truckload quantity based on 53' trailer

#### Materials

FDA approved materials  
Resin: Body: High Density Polyethylene (HDPE)  
Cover: Polypropylene (PP)  
MSDS Sheets available upon request

#### Optional Carrying Handle

Plastic HDPE

#### F.O.B.