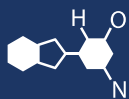


# IF YOU...



MIX IT. FILL IT. PACK IT. SHIP IT.

# WE HAVE A PRODUCT FOR YOU

Part #: 56WLL9

---

---



---

The  
**CARY**COMPANY  
Est. 1895

1195 W. Fullerton Ave. | Addison, IL 60101 | T: 630.629.6600 | F: 630.629.3690 |

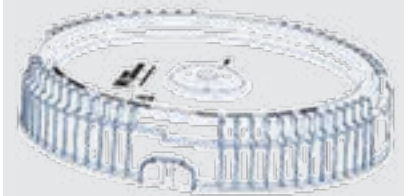
**Product Data**  
Lite Latch® Screwtop  
10.7 Gallon

UN Certification: 1H2/Y48/S



**Cover Specification | Part No. 600826 wh**

Origin of Materials	100% US Manufactured
Material	High Density Polyethylene (HDPE)
Mfg. Method	Injection Molding
Weight	1.41lbs / 642g
Height	2.27"
Min Wall Thickness	.100"
Bottom Outside Diameter	15.05"
Standard Color	White, Red 186, Blue 300 <i>Please inquire about custom colors</i>
Quantity	180 per pallet



**Pail Specification | Part No. 500495**

Origin of Materials	100% US Manufactured
Material	High Density Polyethylene (HDPE)
Mfg. Method	Injection Molding
Weight	4.66lbs / 2118g
Min. Wall Thickness	.125"
Exterior Height	20.83" With Cover 20.94"
Top Inside Diameter	13.34"
Bottom Outside Diameter	12.21"
Shipping Quantity	54 Units per Pallet 2160 Units per Truckload
Standard Color	White <i>Please inquire about custom colors</i>
Print Area	10.5" x 33"
Heat Transfer Area	11.44" x 31"
Top Load Rating	450 lbs.



Bottom OD 12.21"

