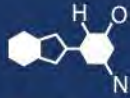


IF YOU...



MIX IT. FILL IT. PACK IT. SHIP IT.

WE HAVE A PRODUCT FOR YOU

Part #: 56WMCO



The
CARYCOMPANY
Est. 1895

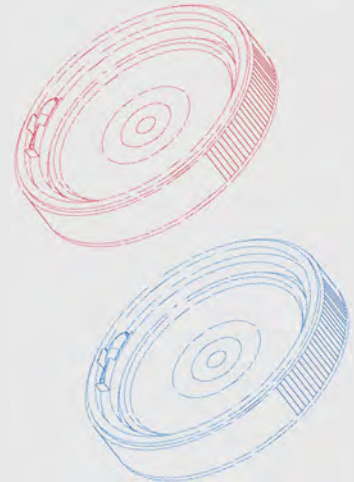
1195 W. Fullerton Ave. | Addison, IL 60101 | T: 630.629.6600 | F: 630.629.3690 |

UN Certification: 1H2/Y4/S



Cover Specification | Part No. 56WMC0

Origin of Materials	100% US Manufactured
Material	High Density Polyethylene (HDPE)
Mfg. Method	Injection Molding
Weight	.166 lbs / 75g
Height	1.37"
Min Wall Thickness	.046"
Bottom OD	7.03"
Gasket	Neoprene / Available w/o Gasket
Standard Color	White, Red 186, Blue 300 <i>Please inquire about custom colors</i>
Case Quantity	180 per case / 1440 per pallet



Pail Specification | Part No. 56WMC0

Origin of Materials	100% US Manufactured
Material	High Density Polyethylene (HDPE)
Mfg. Method	Injection Molding
Weight	.36 lbs / 162 g
Min. Wall Thickness	.049"
Exterior Height	6.88" With Cover 7.39"
Top Inside Diameter	6.15"
Bottom Outside Diameter	5.60"
Shipping Quantity	40 Pails and Covers Per Case 780 Units per Pallet 28,080 Units per Truckload
Standard Color	White <i>Please inquire about custom colors</i>
Print Area	3.75" x 18.25"
Top Load Rating	125 lbs

Top OD 6.15"

Height
w/Cover 7.39"

Height 6.88"

Bottom OD 5.60"

