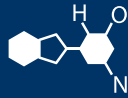


# IF YOU...



MIX IT. FILL IT. PACK IT. SHIP IT.

# WE HAVE A **PRODUCT** FOR YOU

Part # 56WMC1

Plastic EZ Stor Containers

1 Gallon Clarified Super Kube Pail with Plastic Handle



The  
**CARY**COMPANY  
Est. 1895

1195 W. Fullerton Ave. | Addison, IL 60101 | T: 630.629.6600 | F: 630.629.3690 | [TheCaryCompany.com](http://TheCaryCompany.com)

**Pail Specification | Part No. 500487**

Origin of Materials	100% US Manufactured
Material	Polypropylene ( <i>Clarified Optional</i> ) Plastic Handle
Mfg. Method	Injection Molding
Weight	0.29bs / 135g
Min. Wall Thickness	.030"
Exterior Height	8.2" With Cover 8.3"
Top Outside Diameter	5.6"/7.3"
Bottom Outside Diameter	4.6"/6.3"
Shipping Quantity	1,008 Units per Pallet 36,288 Units per Truckload
Standard Color	White <i>Please inquire about custom colors</i>
Print Area Decoration	6.6" x 23.1" In Mold Labeling (IML)

