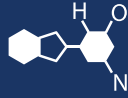


IF YOU...



MIX IT. FILL IT. PACK IT. SHIP IT.

WE HAVE A PRODUCT FOR YOU

Part # 56WMC5

Plastic EZ Stor Containers

5 Gallon Clarified Super Kube Pail with Plastic Handle



The
CARYCOMPANY
Est. 1895

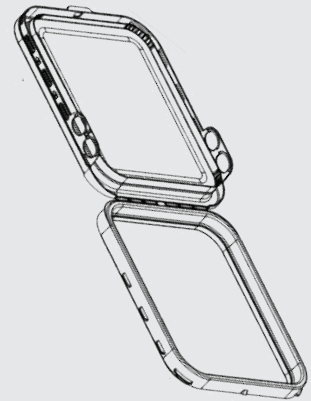
1195 W. Fullerton Ave. | Addison, IL 60101 | T: 630.629.6600 | F: 630.629.3690 | TheCaryCompany.com

Product Data

Super Kube
5.0 Gallon

Cover Specification | Part No. 600716

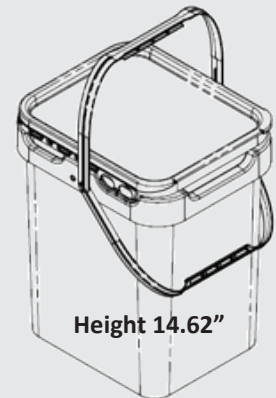
Origin of Materials	100% US Manufactured
Material	Polypropylene
Mfg. Method	Injection Molding
Weight	.47 lbs / 213g
Height	1.29"
Min Wall Thickness	.050"
Top Outside Diameter	9.8"/11.8"
Gasket	Dry Seal
Case Quantity	70 per case 560 per pallet



Pail Specification | Part No. 500471

Origin of Materials	100% US Manufactured
Material	Polypropylene (<i>Clarified Optional</i>) <i>Plastic Handle</i>
Mfg. Method	Injection Molding
Weight	1.4lbs / 635g
Min. Wall Thickness	.055"
Exterior Height	14.62" With Cover 15.15"
Top Outside Diameter	9.5"/11.2"
Bottom Outside Diameter	8.5"/10.1"
Shipping Quantity	160 Units per Pallet 6,720 Units per Truckload
Top Load Rating	250 lbs
Decoration	In Mold Labeling (IML)

Top OD 9.5"/11.2"



Height 14.62"

Bottom OD 8.5"/10.1"