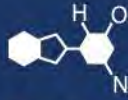


IF YOU...



MIX IT. FILL IT. PACK IT. SHIP IT.

WE HAVE A PRODUCT FOR YOU

Part #: 56WML5



The
CARYCOMPANY
Est. 1895

1195 W. Fullerton Ave. | Addison, IL 60101 | T: 630.629.6600 | F: 630.629.3690

UN Certification: 1H2/Y19/S & 1H2/X16/S



Cover Specification | Part No. 56WML5

Origin of Materials	100% US Manufactured
Material	High Density Polyethylene (HDPE)
Mfg. Method	Injection Molding
Weight	1.03 lbs / 470g
Height	2.50"
Min Wall Thickness	.090"
Bottom OD	12.69"
Gasket	Neoprene / Available w/o Gasket
Standard Color	White, Red 186, Blue 300 <i>Please inquire about custom colors</i>
Case Quantity	20 per case / 240 per pallet



Pail Specification | Part No. 56WML5

Origin of Materials	100% US Manufactured
Material	High Density Polyethylene (HDPE)
Mfg. Method	Injection Molding / Plastic Handle
Weight	1.84 lbs / 836 g
Min. Wall Thickness	.090"
Exterior Height	11.50" With Cover 12.19"
Top Inside Diameter	11.25"
Bottom Outside Diameter	10.27"
Shipping Quantity	6 Pails and Covers Per Case 144 Units per Pallet 4,752 Units per Truckload
Standard Color	White <i>Please inquire about custom colors</i>
Print Area	6.25" x 33"
Heat Transfer Area	6.63" x 31.75"
Top Load Rating	375 lbs

