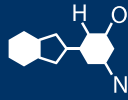


IF YOU...



MIX IT. FILL IT. PACK IT. SHIP IT.

WE HAVE A PRODUCT FOR YOU

Part #56WN2D

Tight Head Plastic Drums

20 Gallon Natural Tight Head Plastic Drum,
UN Rated, 2" NPS & 2" Buttress Fittings



The
CARYCOMPANY
Est. 1895



Product Name:	P20A (GB1 resin)	Desc Prefix:	PA 200
Nominal Capacity:	20.0 USG		75.7 lit
Maximum Capacity:	21.4 USG		81.0 lit
Outage:	1.4 USG		5.3 lit
Outage %:	6.9 %		
Nominal O.D:	16.0 in		406.4 mm
Overall Height:	27.1 in		688.3 mm
Mid Panel Height:	22.6 in		574.0 mm
Total Weight:	10.2 lbs		4.6 kg
Body Weight:	9.8 lbs		4.4 kg
Min Wall Thickness:	0.090 in		2.2 mm
Export Cube:	4.00 cub. ft.		0.11 cub.m.
# Across, Std Trailer	6 drums		
Palletizing, Std	45 x 45, 18 drums per pallet		

Regulatory (US):	Test Report #:
UN 1H1/Y2.0/150	P-111

Regulatory (CAN):	Test Report #:
Not Applicable	

Construction:

Body:	Extrusion blow molded high molecular weight high density polyethylene
Fittings:	One or two 2" BTR or 2" NPS
Special:	Handles – 2 Plastic, hinged

Note: Individual bills of materials may differ according to customer and regulatory requirements. Total weight of drum will vary based upon component combination specified.

Filling Temperature:

Maximum filling temperature 160°F. When filled at this maximum temperature, drums should be allowed to cool to ambient prior to stacking. Drums filled at elevated temperatures should be vented properly to prevent vacuum formation within the drum which can compromise stacking capability.

Stacking/Handling Recommendations:

Drums may be stacked 4 high (1+3) maximum with pallets between drums. Maximum top load on bottom drums should not exceed 1200 lbs (544.0 kg) each. Pallets should be of good quality and properly sized full double faced construction which provide adequate support for plastic drums. Handle with parrotbeak, side grabber or sling.

Special Notes:

- 1) Volume markers available.
- 2) Recycle symbol embossed on bottom.

Disclaimer:

All dimensions are nominal and are not considered manufacturing specifications. This product data sheet does not relieve the customer of their ultimate responsibility for the determination of the appropriate container. It is the customer's responsibility to select the appropriate packaging based upon all information at their disposal, including the specific application, regulatory compliance, product compatibility and shipping requirements.

WE HEREBY DISCLAIM AND EXCLUDE ANY EXPRESS OR IMPLIED WARRANTIES, INCLUDING WITHOUT LIMITATION THE IMPLIED WARRANTIES OF MERCHANTABILITY AND FITNESS FOR A PARTICULAR PURPOSE.