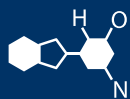


# IF YOU...



MIX IT. FILL IT. PACK IT. SHIP IT.

# WE HAVE A **PRODUCT** FOR YOU

Part #56WN5B

Open Head Plastic Drums

**55 Gallon Blue Plastic Drum, Straight Sided, UN Rated,  
Cover w/Metal Lever Lock, 2" & 3/4" Fittings**



The  
**CARY**COMPANY  
Est. 1895



Product Name:	NexDrum OH 55gal (std)	Desc Prefix:	ON 550
Nominal Capacity:	55.0 USG		208.2 lit
Maximum Capacity:	59.3 USG		224.5 lit
Outage:	4.3 USG		16.3 lit
Outage %:	7.8 %		
Nominal O.D.:	23.5 in		596.9 mm
Bottom O.D.:	22.9 in		581.7 mm
Opening I.D.:	22.3 in		566.4 mm
Overall Height:	36.3 in		922.0 mm
Body Height:	35.7 in		906.8 mm
Mid Panel Height:	N/A		N/A
Chime Height:	0.640 in		16.3 mm
Total Weight:	21.9 lbs		9.9 kg
Body Weight:	16.5 lbs		7.4 kg
Min Wall Thickness:	0.090 in		2.2 mm
Export Cube:	11.02 cub. ft.		0.31 cub.m.
# Across, Std Trailer	4 drums		
Palletizing, Std	46 x 46, 8 drums per pallet		

Regulatory (US):	Test Report #:
UN 1H2/Y150/S	P-193

Regulatory (CAN):	Test Report #:
Not Applicable	

**Construction:**

Body:	Extrusion high molecular weight high density polyethylene
Cover:	Plastic, with or without gasket, plain or with 2" and/or 3/4" fittings, vented or non-vented
Closing Ring:	Steel Bolt Ring or Steel SLL

Note: Individual bills of materials may differ according to customer and regulatory requirements. Total weight of drum will vary based upon component combination specified.

**Filling Temperature:**

Maximum filling temperature 160°F. When filled at this maximum temperature, drums should be allowed to cool to ambient prior to stacking. Drums filled at elevated temperatures should be vented properly to prevent vacuum formation within the drum which can compromise stacking capability.

**Stacking/Handling Recommendations:**

Drums may be stacked 3 high (1+2) maximum with pallets between drums. Maximum top load on bottom drums should not exceed 2000 lbs (907.2 kg) each. Pallets should be of good quality and properly sized full double faced construction which provide adequate support for plastic drums. Handle with parrotbeak, side grabber or sling.

**Special Notes:**

- 1) Contrast colors available for cover and bottom.
- 2) Recycle symbol embossed on bottom.

<p>Disclaimer:</p> <p>All dimensions are nominal and are not considered manufacturing specifications. This product data sheet does not relieve the customer of their ultimate responsibility for the determination of the appropriate container. It is the customer's responsibility to select the appropriate packaging based upon all information at their disposal, including the specific application, regulatory compliance, product compatibility and shipping requirements.</p> <p>WE HEREBY DISCLAIM AND EXCLUDE ANY EXPRESS OR IMPLIED WARRANTIES, INCLUDING WITHOUT LIMITATION THE IMPLIED WARRANTIES OF MERCHANTABILITY AND FITNESS FOR A PARTICULAR PURPOSE.</p>
--