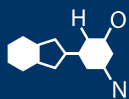


# IF YOU...



MIX IT. FILL IT. PACK IT. SHIP IT.

# WE HAVE A PRODUCT FOR YOU

Part #: 56WR2D

Plastic EZ Stor Containers

2 Gallon White EZ Stor® Diamond  
Weave PP Plastic Container w/Handle



The  
**CARY**COMPANY  
Est. 1895

1195 W. Fullerton Ave. | Addison, IL 60101 | T: 630.629.6600 | F: 630.629.3690 | [TheCaryCompany.com](http://TheCaryCompany.com)

# Product Specifications

## 2-Gallon EZ STOR® Container with Lightweight Hinged Cover

### Multiple Uses

Dry Products

### Product Codes

Container: **E02G – Diamond Pattern**

Description: 2-gallon rectangular can

Cover: **E2DL**

Description: Lightweight, dry seal, tamper-evident, hinged, EZ open & close cover with Ring Pull® and locking mechanism to keep lid open

### Features

Gauge: 35+ mil.

Nominal capacity: 2.0 USG / 7.6 L

Stack performance: 140 lbs.\*

Tare weights: Body: .47 lbs. / .21 kgs.

Cover: .165 lbs. / .075 kgs.

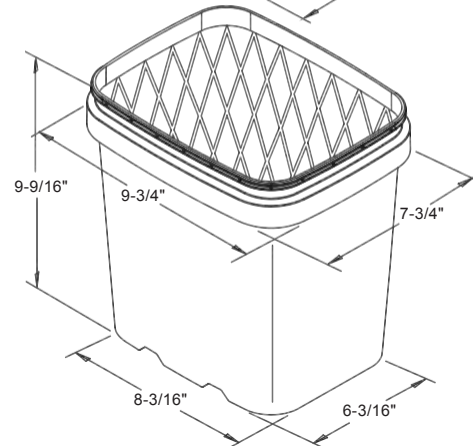
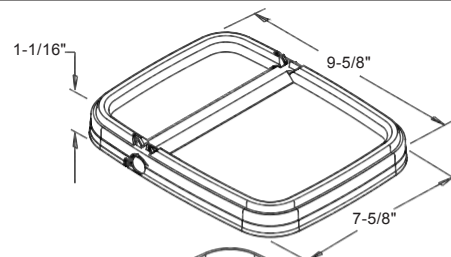
Note: \*Ratings will be reduced with uneven load distribution.

### Specifications with Cover

Dimensions: 9-3/4"L X 7-3/4"W X 9-5/8"H

Maximum capacity: 2.11 USG / 8 L

Tare weight: .635 lbs. / .285 kgs.



### Colors

Standard: White, Natural and Clear

Custom: Available at manufacturer's discretion

### Decorating Options

Four or six color offset printing\*

Sleeve or pressure sensitive labeling

In-Mold labeling (IML)

Note: \*Where available

### Shipping Data

Qty. per pallet:

### Bodies

400

### Covers

3,000 (30 boxes of 100)\*

### Filled Containers

100 (25 per layer / 4 layers high)

Gross Weight (lbs./kgs.)\*\*:

188/84

495/225

Pallet height: 43-1/4"

Den. (lbs./C.F./kgs./m3):

4.7/74.7

5.7/91.7

Length (in./cm.):

49.0/124.5

48/122

Width (in./cm.):

40.0/101.6

40/102

Height (in./cm.):

35.0/88.9

78/198.1

Estimated truckload quantity of 17,600 bodies and covers\*\*\*

Notes: \*Bulk pack of 1200 is also available

\*\*Weight does not include pallet / packaging

\*\*\*Truckload quantity based on 48' trailer

### Materials

FDA approved materials

Resin: Body: Polypropylene (PP)

or

Clear Polypropylene

Cover: Polypropylene (PP)

### Optional Carrying Handle

MSDS Sheets available upon request