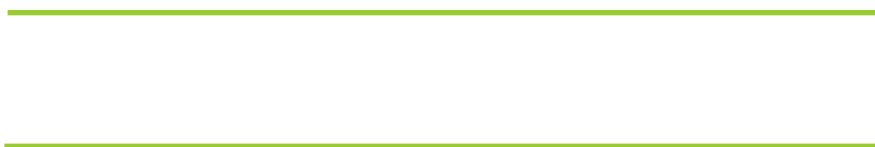


# IF YOU...



MIX IT. FILL IT. PACK IT. SHIP IT.

# WE HAVE A PRODUCT FOR YOU



Part #

57W50V

Neck Width

50 mm

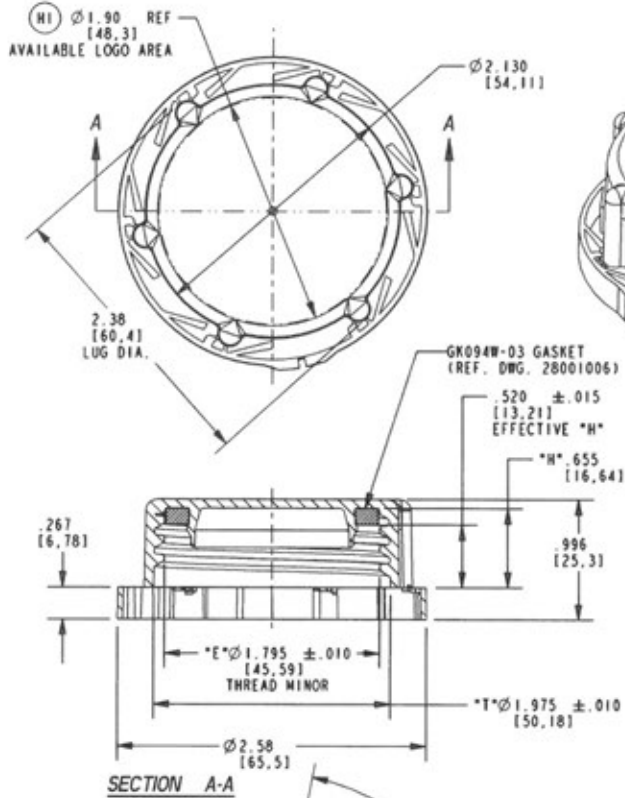
Color

Black

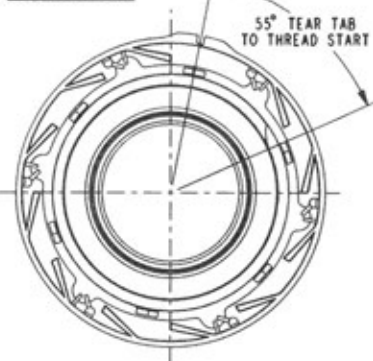
Material

PP



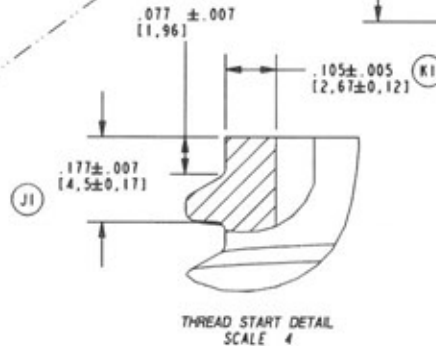
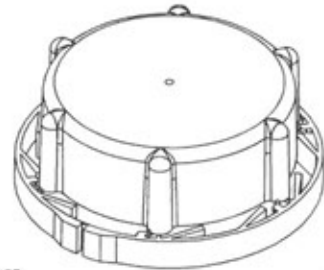


SECTION A-A

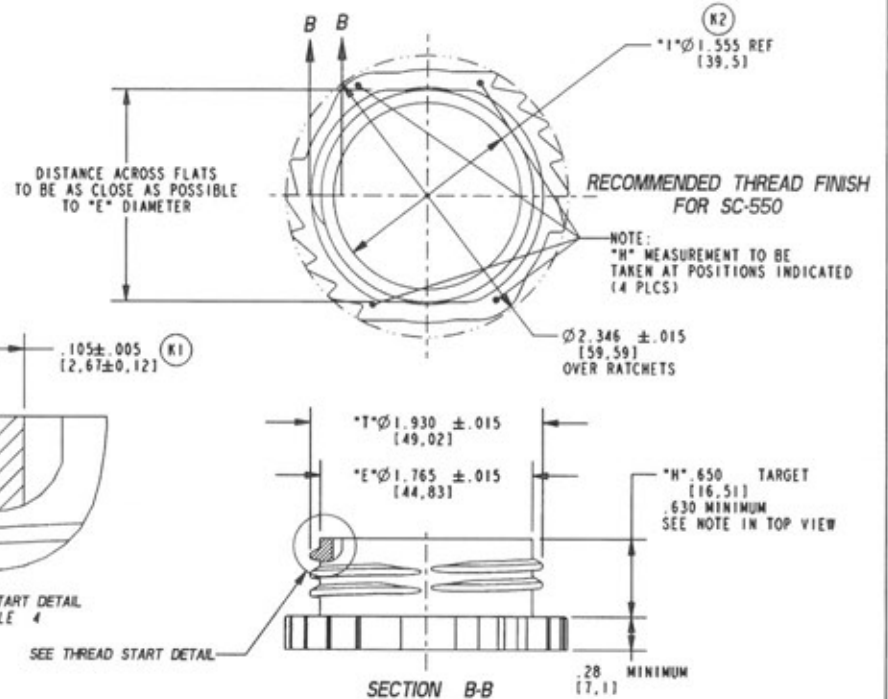


- NOTES:  
1) MINIMUM RECOMMENDED CAP TORQUE: 50 in-lb  
2) REFERENCE DRAWING 18005326 FOR COMPLETE THREAD FINISH INFO.  
3) REFERENCE DRAWING 28000975 FOR COMPLETE CLOSURE INFO.

BREAK ALL SHARP EDGES WITH 1/64" RADIUS UNLESS OTHERWISE SPECIFIED	DATE	DRAWN BY
THE FOLLOWING TOLERANCES APPLY UNLESS OTHERWISE SPECIFIED:	31-OCT-00	TPK
ANGLES	SCALE	CHECKED
HUNDRETH	FULL	RDR
THOUSANDTH		APPROVED



THREAD START DETAIL SCALE 4



SECTION B-B

K	K1: 105 ± 0.005 WAS .100 MIN. K2: Ø 1.555 REF WAS Ø 1.470 MIN	08-Sep-10	TPK
J	J1: ADD 1.77 ± 0.007	24-Nov-09	TPK
H	H1: REMOVE LOGO AND ADD Ø 1.90 REF	10-Oct-02	TPK
G	G1: REVISE "H" NOTE AND MEASUREMENT POSITIONS. G2: .630 WAS .635	25-Sep-02	TPK
F	F1: ADD LOGO. F2: 50 WAS 55. F3: .650 WAS .610 AND ADD .635 MINIMUM. F4: REMOVE TABLE	25-Jul-02	TPK
E	E1: GK094W-03 WAS GK094W-02	13-Jun-02	TPK
D	D1: WAS GK094W-01	28-Feb-02	TPK
C	C1: 28 MINIMUM WAS .30	12-Jul-01	RDR
B	B1: 2800108 WAS 2800094. B2: REMOVE 10L AND ADD "MIN". B3: Ø 1.470 WAS Ø 1.500 B4: ADD NOTE	09-Apr-01	TPK
A	A1: .650 ± .015 WAS .650	26-Feb-01	TPK

CUSTOMER DRAWING

PRO/E

DETAIL NAME	50mm SCREW CAP
TOOL ASS'TY NAME	
PRODUCT	
DRAWING NUMBER	
FOR	AUBURN
MATERIAL	TEMPER N/A
DETAIL NUMBER	