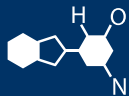


IF YOU...



MIX IT. FILL IT. PACK IT. SHIP IT.

WE HAVE A **PRODUCT** FOR YOU



Part #

57WCTE

Neck Width

70 mm

Color

Natural

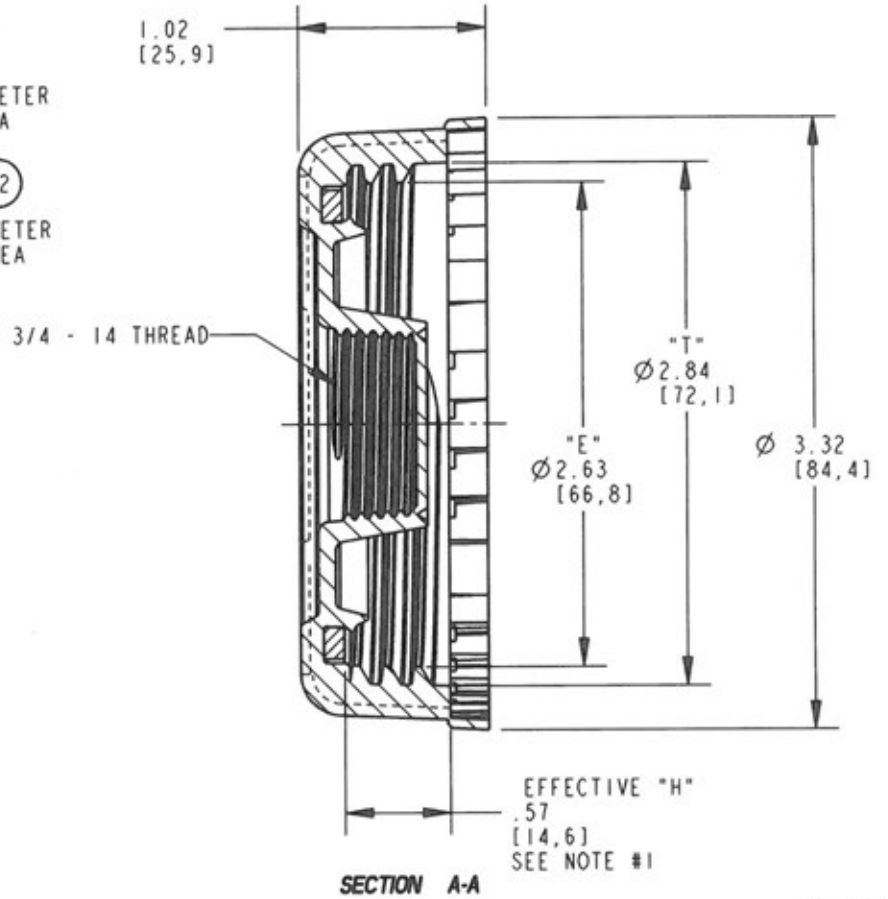
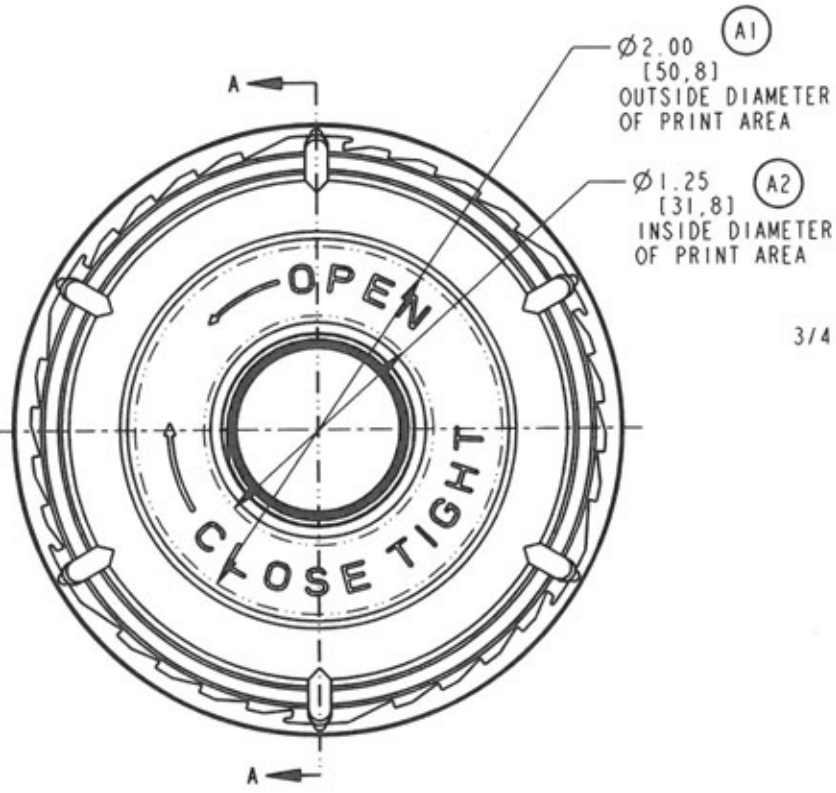
Material

PE

Model

Rieke® SC-76RTE





- NOTES:
- EFFECTIVE "H" IS ESTABLISHED BY SUBTRACTING GASKET THICKNESS FROM OVERALL "H"
 - MATERIALS USED MEET FDA REQUIREMENTS
 - 6TPI, .167 PITCH

CUSTOMER DRAWING

PRO/E

BREAK ALL SHARP EDGES WITH 1/64" RADIUS, UNLESS OTHERWISE SPECIFIED		DATE	DRAWN BY			TITLE		CLOSURE, 70mm, 6TPI BUTTRESS, TAMPER EVIDENT WITH 3/4" REDUCER		
THE FOLLOWING TOLERANCES APPLY UNLESS OTHERWISE SPECIFIED:		09-APR-02	VLV	A	A1-2: ADD LIMITS OF PRINT AREA	14-APR-04	TPK	PRODUCT		
ANGLES	$\pm 1/4^\circ$	SCALE	CHECKED		INITIAL RELEASE	09-APR-02	VLV	SC-76RTE		
HUNDREDTH	$\pm .02$ [0,50]	1.0	TPK	CHANGE NUMBER	CHANGE	DATE	BY	DRAWING NUMBER		
THOUSANDTH	$\pm .010$ [0,25]		APPROVED	The CARY COMPANY Est. 1895				MFG LOCATION		
							AUBURN		DETAIL NUMBER	
							MATERIAL		TEMPER	