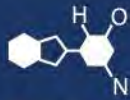


# IF YOU...



MIX IT. FILL IT. PACK IT. SHIP IT.

# WE HAVE A PRODUCT FOR YOU

Part #: 57WSP6

---

---



---

The  
**CARY**COMPANY  
Est. 1895

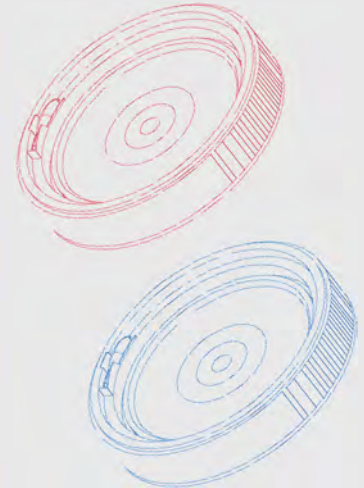
1195 W. Fullerton Ave. | Addison, IL 60101 | T: 630.629.6600 | F: 630.629.3690 |

UN Certification: 1H2/Y30/S & 1H2/X11.5/S



**Cover Specification | Part No. 57WSP6**

Origin of Materials	100% US Manufactured
Material	High Density Polyethylene (HDPE)
Mfg. Method	Injection Molding
Weight	1.03 lbs / 470g
Height	2.50"
Min Wall Thickness	.090"
Bottom OD	12.69"
Gasket	Neoprene / Available w/o Gasket
Standard Color	White, Red 186, Blue 300 <i>Please inquire about custom colors</i>
Case Quantity	20 per case / 240 per pallet



**Pail Specification | Part No. 57WSP6**

Origin of Materials	100% US Manufactured
Material	High Density Polyethylene (HDPE)
Mfg. Method	Injection Molding / Plastic Handle
Weight	2.81 lbs / 1276 g
Min. Wall Thickness	.090"
Exterior Height	18.75" With Cover 19.45"
Top Inside Diameter	11.25"
Bottom Outside Diameter	10.27"
Shipping Quantity	2 Pails and Covers Per Case 84 Units per Pallet 3,360 Units per Truckload
Standard Color	White <i>Please inquire about custom colors</i>
Print Area	10.5" x 33"
Heat Transfer Area	11.4" x 31"
Top Load Rating	400 lbs

Top OD 11.25"



Height  
w/Cover 19.45"

Height 18.75"

Bottom OD 10.27"

