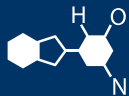


IF YOU...



MIX IT. FILL IT. PACK IT. SHIP IT.

WE HAVE A PRODUCT FOR YOU



Part #	57WTHN
Capacity	5 gal.
Color	Natural
Material	HDPE
Closure	Tight Head (Closed)
Fittings	70mm
Dimensions	11.55" Dia. (middle) x 11.595" Dia. (over ribs) x 14.61"H
Pallet Pack	72 ea.



Supplied By: **The Cary Company**

Ph: 630-629-6600

www.thecarycompany.com

Specification Sheets

Item Number

57WTHN

Item Description

5 GAL RD -70MM CAP

Finish /

NATURAL

Item Type

Finished Item

Revision Date

04/28/2011

Specification

48 Plastics-Workcenter

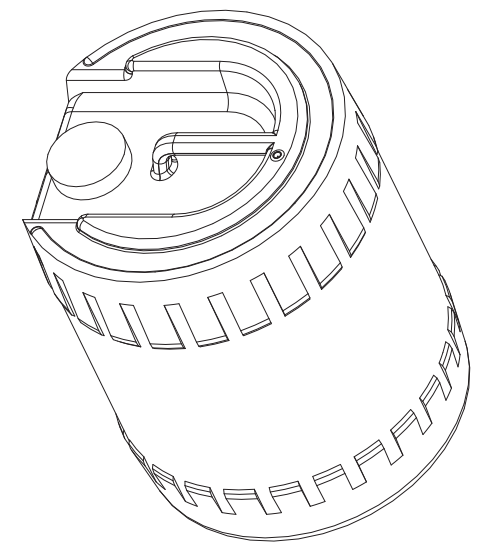
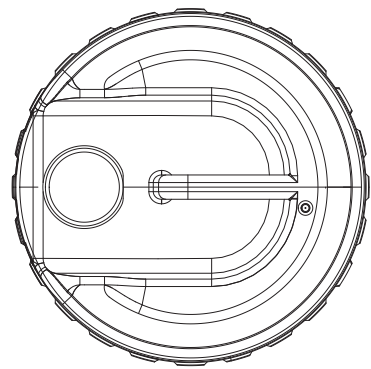
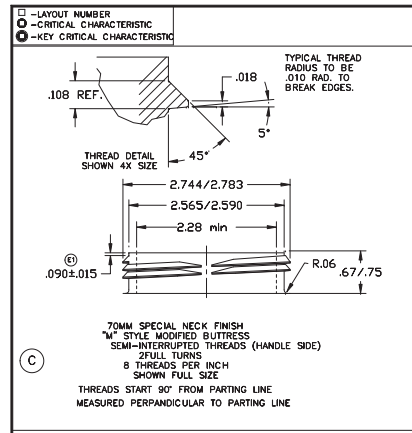
- 1 Weight: 1100 - 1150 Grams
- 2 Container Markings and Bottle Finish: Visually check 100%
- 3 UN# 1H1/Y1.8/150/**/USA/M5105
- 4 Material LP5100-with .5% UVI.

62 QA

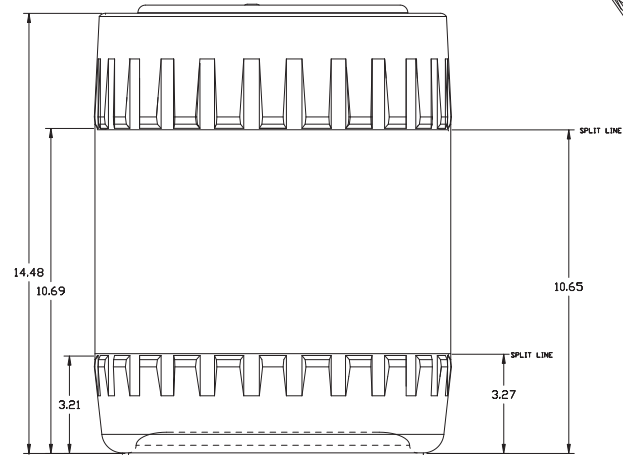
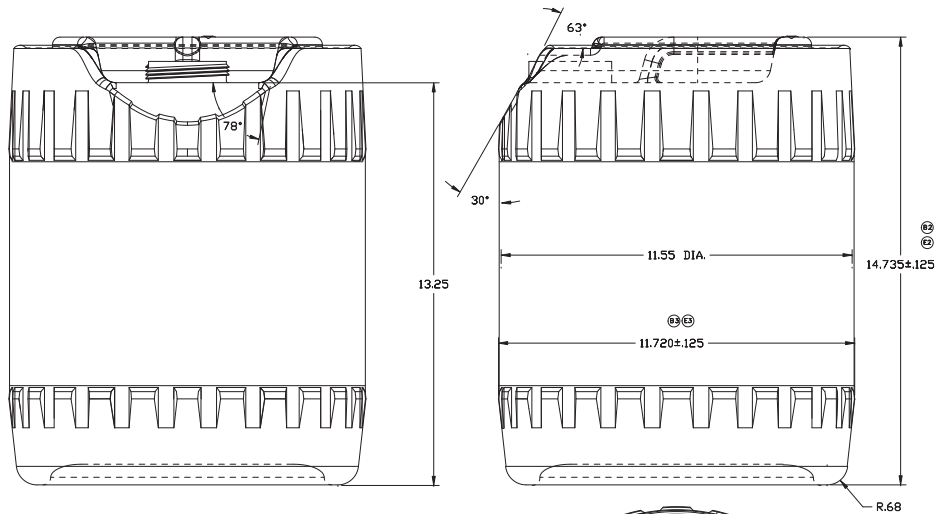
- 1 Wall Thickness: Top: .035" Min.
Middle: .035" Min.
Bottom: .035" Min.
- 2 Neck Finish: 70MM Neck:
'T': 2.744" - 2.783"
'E': 2.565" - 2.590"
'C': 2.28" Min.
'H': .67" - .75"
'S': .075" - .105"
Planarity: .010 Max.
- 3 Leak Torque: 175 in. lbs.
- 4 Stripping Torque for Closure Strength: 192 in. lbs. min.
5. Overflow Capacity: 5.35 Gal. Min.
- 6 Overall Height: 14.61" - 14.86"
Middle Diameter: 11.55"
Overall Diameter over Ribs: 11.595" - 11.845"
- 7 UN TEST See UN/DOT standards for instructions.
A. 24 hour freezer drop test.
B. 1 hour vibration test
C. Hydrostatic pressure test
D. Dynamic Compression test / stack test
E. Leakproofness test
No single container is expected to pass more than one of these tests.
UN#: Container to be recertified annually.

SPECIALTY CHEMICALS - INDUSTRIAL FILTRATION - CONTAINERS & PACKAGING - SPILL CONTROL - PLASTIC ADDITIVES - SHIPPING & FACILITY SUPPLIES

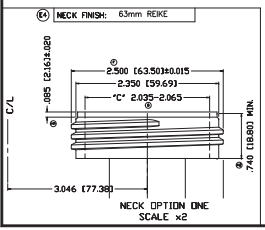
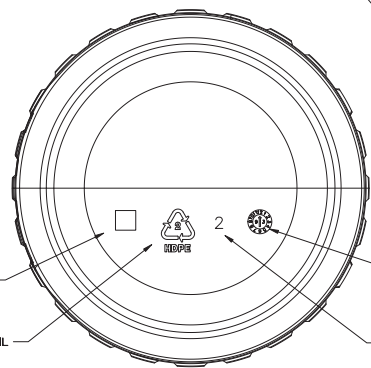




FOR REFERENCE ONLY UNLESS STAMPED OTHERWISE



NOTES:
 1. OVERFLOW_CAPACITY 5.35 GALLONS



E07-015	2/09	E4	ADDED NECK FINISH SC-63M	CB	DRAWN BY:	DATE:	REVISED:	
E07-015	2/09	E3	11.720 WAS 11.63	CB	DAC	12/27/99	2/6/09	
E07-015	2/09	E2	14.735 WAS 14.75	CB	CHECKED BY:	DATE:	SCALE FACTOR:	
E07-015	2/09	E1	0.90 WAS .150	CB			1:2	
E07-009	4/02	D	OVERFLOW CAP WAS 5.5 GAL	MS	TOLERANCES UNLESS OTHERWISE SPECIFIED		MATERIAL:	DRAWING DESCRIPTION:
E05-008	8-03	C	SEE ECH	MS			HDPE	5 GALLON ROUND CONTAINER
E3-012	8/02	B3	11.43±.125 WAS 11.75	MS				
		B1	14.47±.125 WAS 14.75	MS				
		B1	ADDED NOTE #1	MS				
	11/01	A	ADDED 'C' DIM OF 2.31	MS			ITEM NUMBER:	DRAWING NUMBER:
EC	DATE	REV	CHANGE	BY	DO NOT SCALE PRINT		7925	7925-000