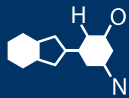


# IF YOU...



MIX IT. FILL IT. PACK IT. SHIP IT.

# WE HAVE A **PRODUCT** FOR YOU

Part #: 67W04W

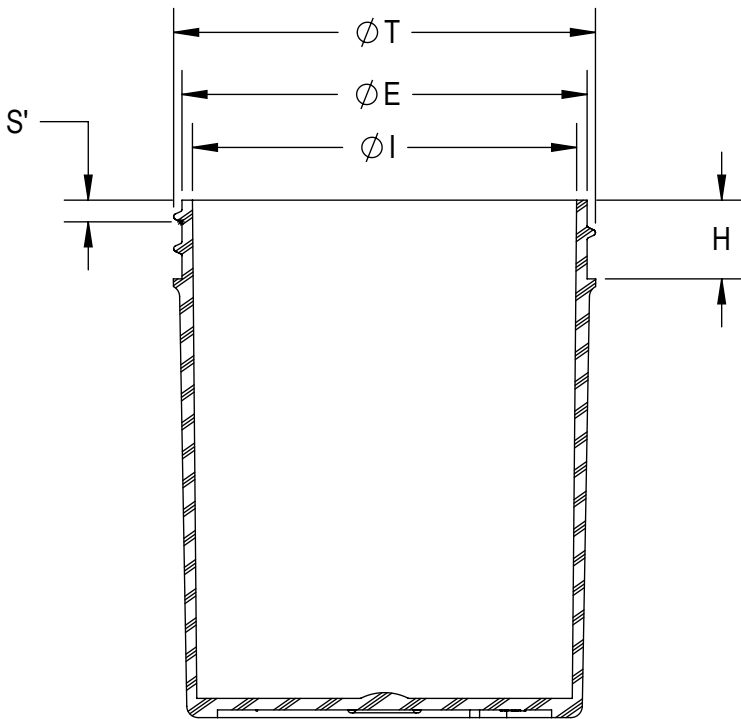
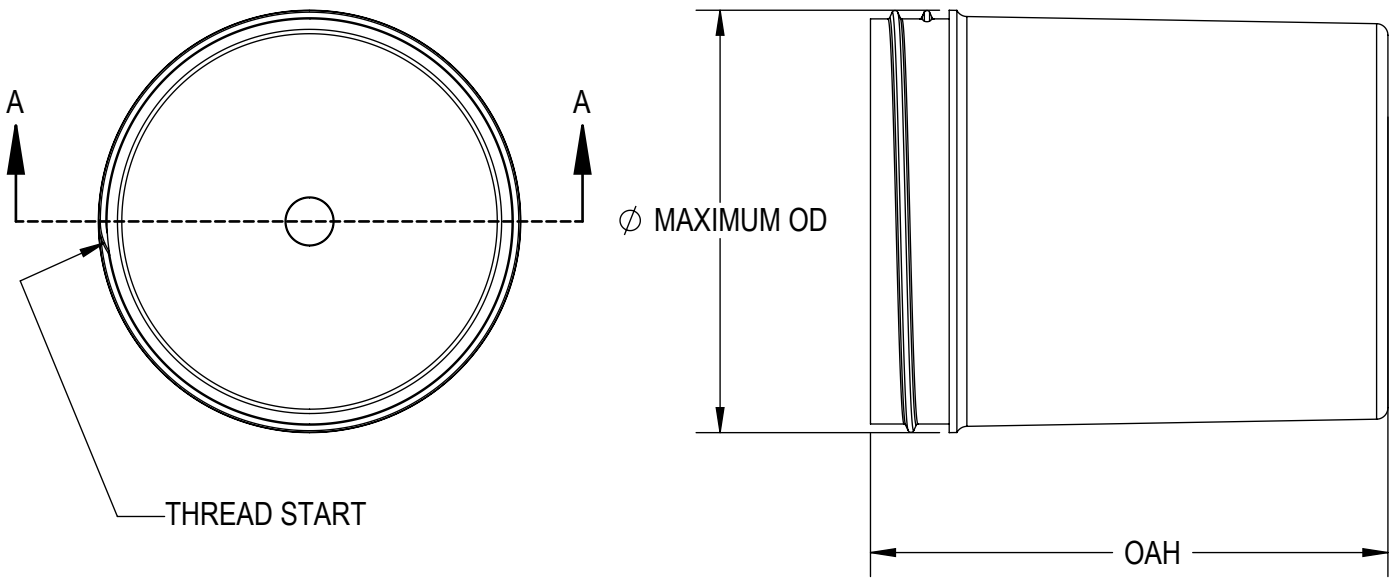
Plastic Straight Sided Jars

**4 oz. White PP Plastic Jar,  
Straight Sided, 58mm 58-400**



The  
**CARY**COMPANY  
Est. 1895

1195 W. Fullerton Ave. | Addison, IL 60101 | T: 630.629.6600 | F: 630.629.3690 | [TheCaryCompany.com](http://TheCaryCompany.com)



SECTION A-A

**THREAD DETAIL INFORMATION**  
 6 THREADS PER INCH, 0.167 PITCH  
 450° (1 1/4 TURNS FULL DEPTH THREAD)

REFERENCE	TOLERANCE	DIMENSION	UNITS
E	±0.017 [0.43]	2.110 [53.59]	in [mm]
T	±0.017 [0.43]	2.197 [55.80]	in [mm]
I	±0.017 [0.43]	2.001 [50.83]	in [mm]
S'	±0.015 [0.38]	0.106 [2.69]	in [mm]
OAH	±0.015 [0.38]	2.678 [68.02]	in [mm]
H	±0.015 [0.38]	0.405 [10.29]	in [mm]
MAXIMUM OD	±0.017 [0.43]	2.236 [56.79]	in [mm]
PART WEIGHT	±1.5	16.7	g
FILL VOLUME	±5%	4.4 [130]	oz [cc]

STATIC TORQUE RECOMMENDATION  
**23-40 in-lbs**  
 THIS REQUIREMENT MAY VARY DEPENDING  
 UPON BOTTLE MATERIAL, NECK FINISH, AND  
 CAPPING EQUIPMENT

DRAWING TYPE : CUSTOMER

REPLACES DRAWINGS:  
 J-1010

DIMENSIONS ENCLOSED IN ( )  
 INDICATE REFERENCE  
 DIMENSIONS AND NO TOLERANCE  
 LIMITS ARE ESTABLISHED

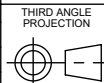
TOLERANCES UNLESS OTHERWISE SPECIFIED

DIMENSION (inches)	TOLERANCE	DIMENSION (mm)	TOLERANCE
0-0.787	±0.006	0-20	±0.152
0.788-1.181	±0.008	21-30	±0.203
1.182-2.756	±0.012	31-70	±0.305
2.757-3.937	±0.016	71-100	±0.406
3.938-5.096	±0.020	101-150	±0.508
5.097-7.874	±0.024	151-200	±0.610
7.875-9.843	±0.032	201-250	±0.813

ANGULAR TOLERANCE ± 2°

PROPRIETARY AND CONFIDENTIAL

The **CARY COMPANY**  
 Est. 1895



SOLIDWORKS

DISTRIBUTION  
 CODE  
**D**

DRAWING NAME  
**4oz 58mm Jar  
 Regular Wall**

DRAWING NUMBER  
**CQA - 10311**

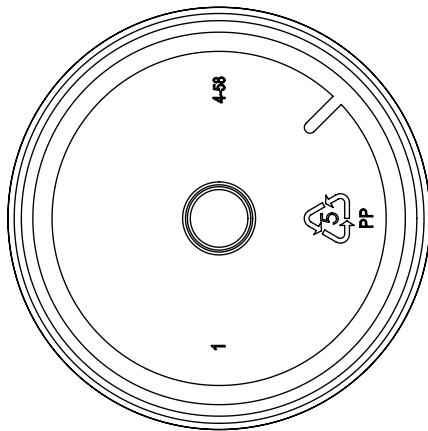
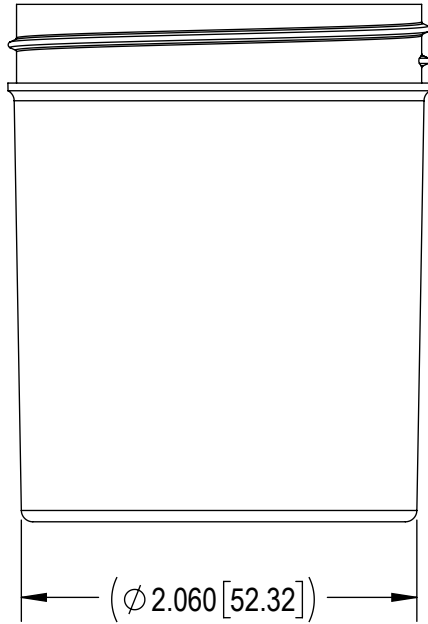
MATERIAL  
**POLYPROPYLENE**

MODEL NUMBER:  
**PM 11075 4oz 58mm Jar**

DRAWN BY:	JDM	6/13/2016
ENG APPR.	JDM	1/16/2019
QA APPR.	REL	04/29/2019

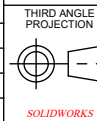
SCALE	SHEET SIZE	SHEET	REV NP
1:1	8.5in*11in	1 of 2	00.AB

DATE	REV	N/P	DESCRIPTION	ENG	DRWN
09/06/2016	00	AA	UPDATED DRAWING FORMAT, UPDATE PART SPECS PER VALIDATION ON 4/19/2016, ADDED S'	JDM	JDM
11/01/2018	00	AB	DRAWING UPDATED TO REFLECT HISTORICAL RUN DATA & PROCESS CAPABILITY. NO CHANGES TO THE STEEL OR PART HAVE OCCURRED	JDM	AMK



DRAWING TYPE : CUSTOMER			
REFERENCES: 580403		DIMENSIONS ENCLOSED IN ( ) INDICATE REFERENCE DIMENSIONS AND NO TOLERANCE LIMITS ARE ESTABLISHED	
TOLERANCES UNLESS OTHERWISE SPECIFIED			
DIMENSION (inches)	TOLERANCE	DIMENSION (mm)	TOLERANCE
0-0.787	±0.006	0-20	±0.152
0.788-1.181	±0.008	21-30	±0.203
1.182-2.756	±0.012	31-70	±0.305
2.757-3.937	±0.016	71-100	±0.406
3.938-5.096	±0.020	101-150	±0.508
5.097-7.874	±0.024	151-200	±0.610
7.875-9.843	±0.032	201-250	±0.813
ANGULAR TOLERANCE ± 2°			
PROPRIETARY AND CONFIDENTIAL			

The  
**CARY**COMPANY  
Est. 1895



SOLIDWORKS

DISTRIBUTION  
CODE  
**D**

DRAWING NAME <b>4oz 58mm Jar Regular Wall</b>			
DRAWING NUMBER <b>CQA - 10311</b>			
MATERIAL <b>POLYPROPYLENE</b>			
MODEL NUMBER: <b>PM 11075 4oz 58mm Jar</b>			
SCALE <b>1:1</b>	SHEET SIZE <b>8.5 X 11</b>	SHEET <b>2 of 2</b>	REV.NP <b>00.AB</b>

DRAWN BY.	JDM	6/13/2016
ENG APPR.	JDM	1/16/2019
QA APPR.	REL	04/29/2019