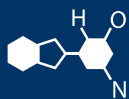


# IF YOU...



MIX IT. FILL IT. PACK IT. SHIP IT.

# WE HAVE A **PRODUCT** FOR YOU

Part # 67W110

Continuous Thread Caps

110mm 110-400 White Ribbed (Matte Top) Plastic  
Cap w/Foam Liner (3-ply)

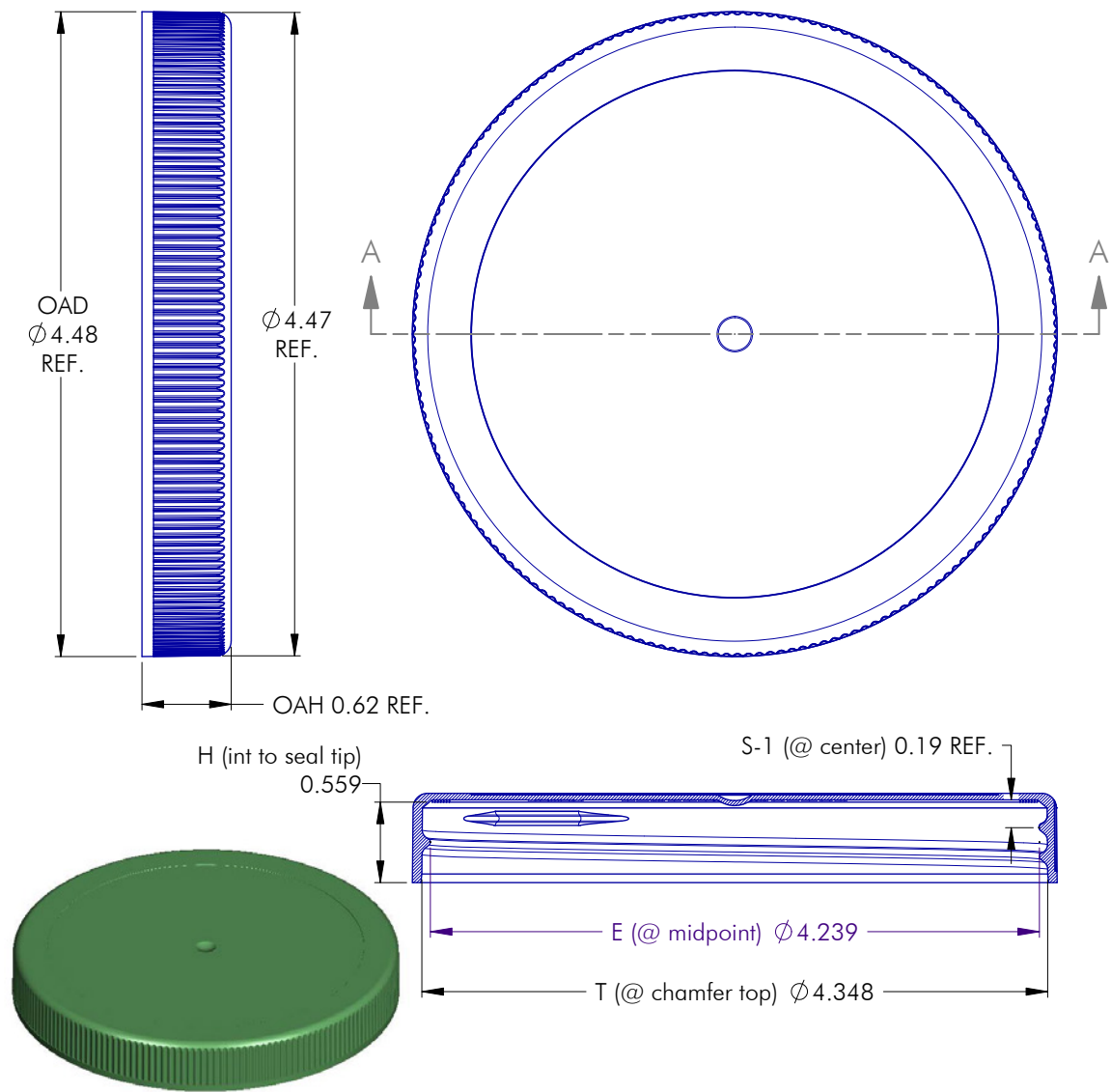


The  
**CARY**COMPANY  
Est. 1895

1195 W. Fullerton Ave. | Addison, IL 60101 | T: 630.629.6600 | F: 630.629.3690 | [TheCaryCompany.com](http://TheCaryCompany.com)

SHALLOW SKIRTED CLOSURES

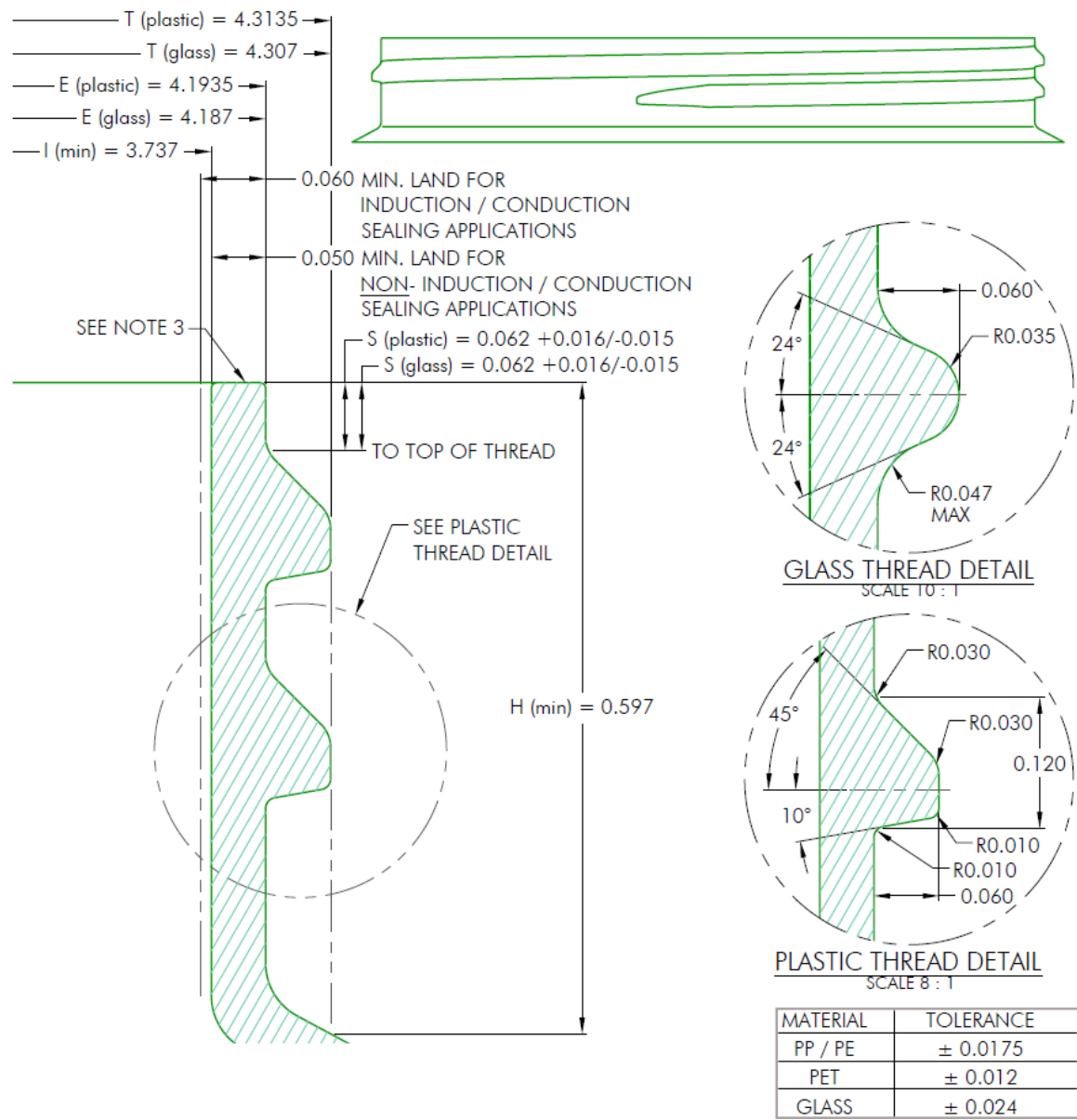
67W110



NOTES: (UNLESS OTHERWISE SPECIFIED) 1. ALL DIMENSIONS ARE IN INCHES. 2. SEE CHART FOR DIMENSIONAL TOLERANCE.				3	03.03.10	Update "E" Dimension				DN		
				REV	DATE	DESCRIPTION				BY		
<div>The CARY COMPANY</div> <div>Est. 1895</div>				TOLERANCE	PITCH/TPI .200 / 5		TURN	1-1/4	MAT'L	PP		
				.X	±0.1	DRAWN	DMN	DATE	06.29.09	SCALE	1 : 1	REV
				.XX	±0.02	67W110						3
				.XXX	±0.010							

SHALLOW SKIRTED CLOSURES

67W110



NOTES: (UNLESS OTHERWISE SPECIFIED)  
1. ALL DIMENSIONS ARE IN INCHES.  
2. SEE CHART FOR DIMENSIONAL TOLERANCE.

0	11.17.97	Released	BZ
REV	DATE	DESCRIPTION	BY
TOLERANCE	PITCH/TPI .200 / 5	TURNS 1-1/4	MAT'L Per Chart
.X ±0.1	DRAWN BEZ	DATE 11.17.97	SCALE 8 : 1
.XX ±0.02			REV
.XXX ±0.010		67W110	0

The  
**CARY**COMPANY  
Est. 1895