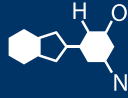


IF YOU...

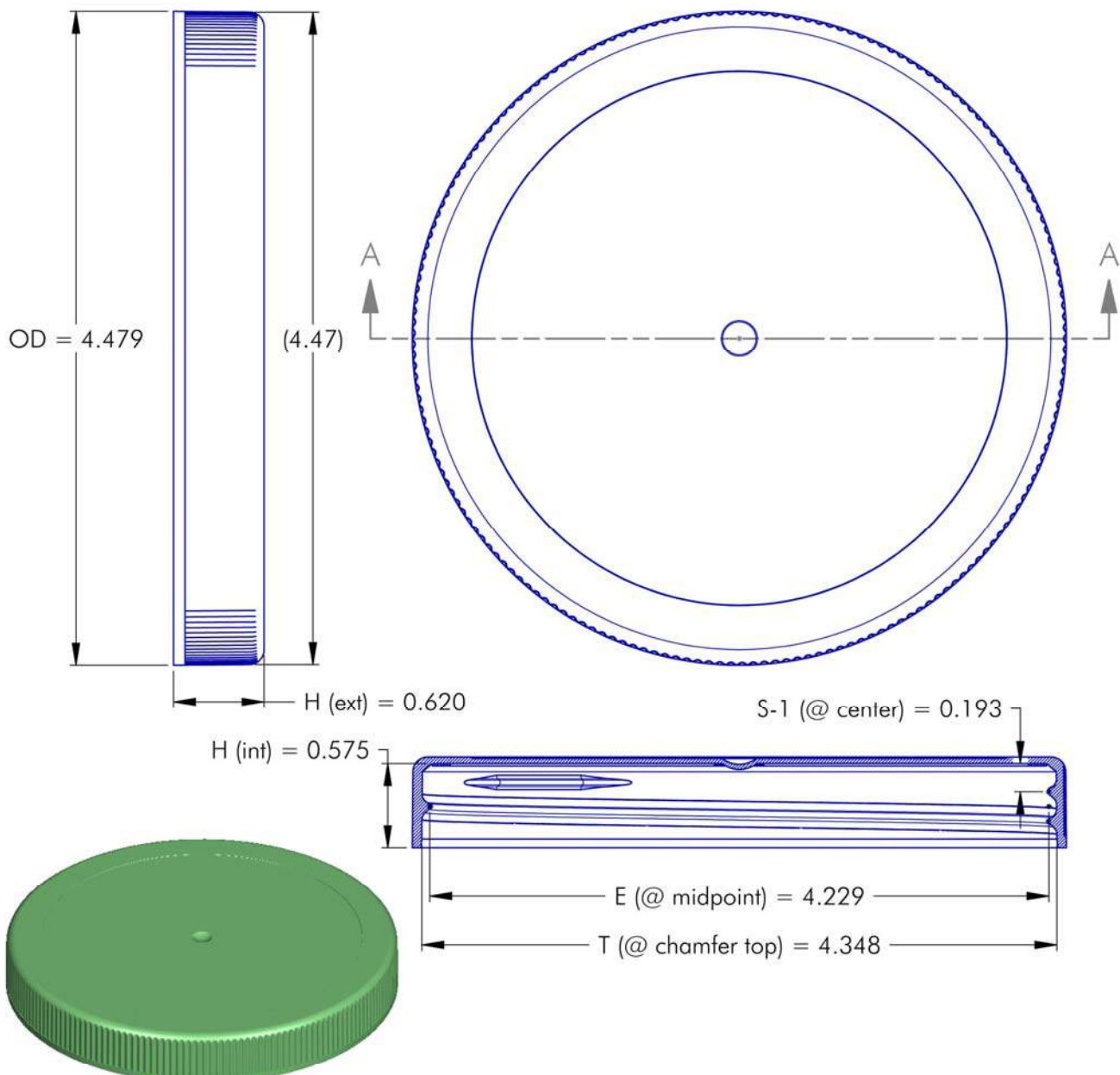


MIX IT. FILL IT. PACK IT. SHIP IT.


WE HAVE A PRODUCT FOR YOU

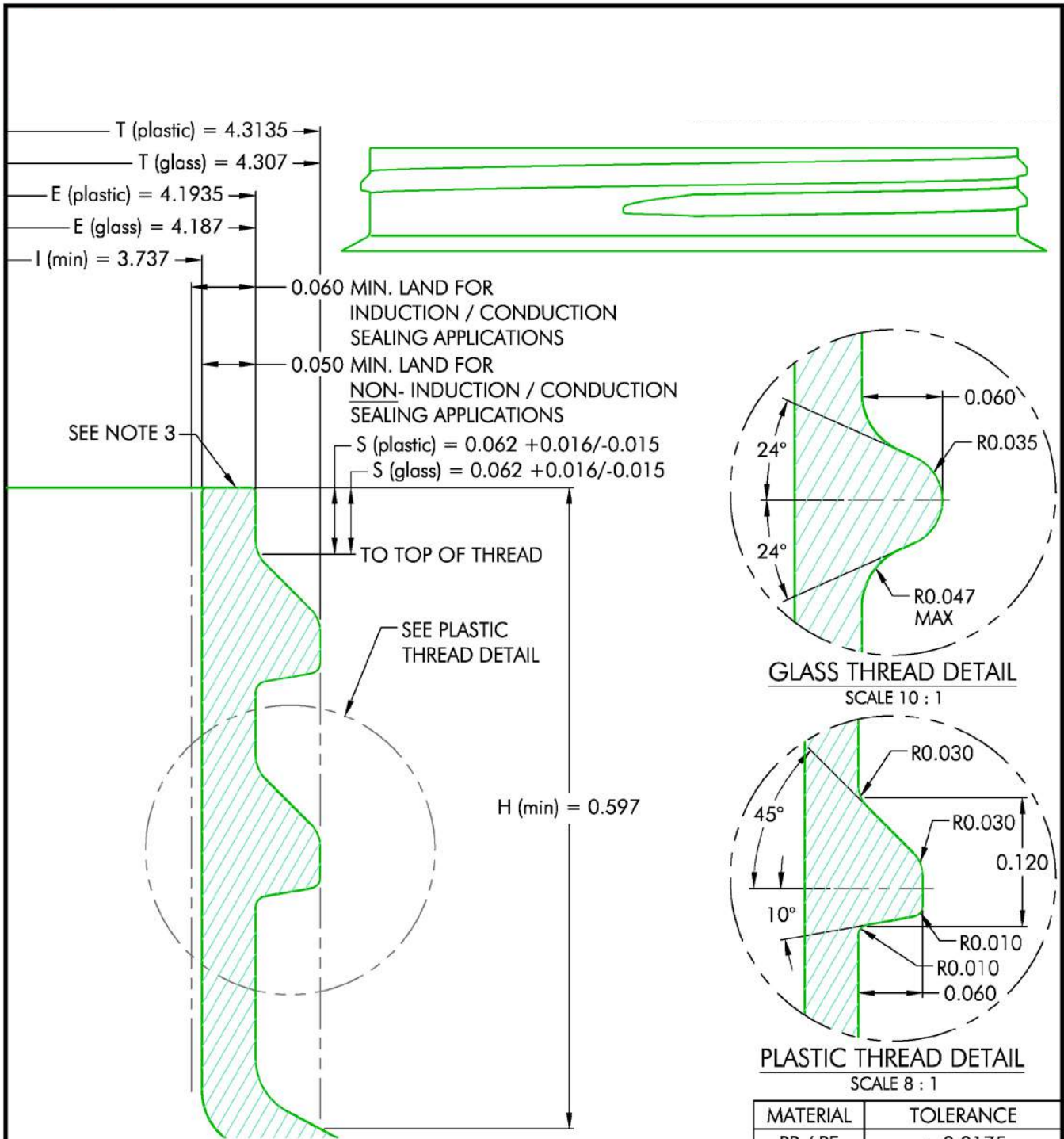


Part #	67W11H
Neck Width	110 mm
Neck Finish	110-400
Cap Liner	FoilSeal™ .008 C1S FS 1-13 Heat Induction Foil
Liner Compatibility	PE (HDPE, LDPE)
Color	White
Material	PP
Case Pack	333 ea.
Pallet Pack	4,995 ea. (15 Cases)
Case Weight	19.51 lbs.
Case Dimensions	24" x 16" x 15"
Pallet Dimensions	48" x 40" x 50"



NOTES: (UNLESS OTHERWISE SPECIFIED)
 1. ALL DIMENSIONS ARE IN INCHES.
 2. TOLERANCE ON ALL DIMENSIONS IS ± 0.010 ".

#	00.00.00	-	--	PITCH (TPI): 5	# OF TURNS: 1-1/4	MATERIAL: POLYPROPYLENE
REV	DATE	DESCRIPTION	BY	DRAWING #: 110 - 400 - 9613S		SCALE: 1 : 1
 Supplied By: The Cary Company Ph: 630-629-6600 www.thecarycompany.com				DESCRIPTION: 110-400-7513 / MEDIUM RIB / '470-TYPE'		
				DRAWN BY: DMN	DATE: 06.29.09	APPROVED BY: LRE REV: 2



- NOTES: (UNLESS OTHERWISE SPECIFIED)
1. ALL DIMENSIONS ARE IN INCHES.
 2. TOLERANCE ON ALL DIMENSIONS GIVEN BY CHART.
 3. UNEVEN LAND CONDITIONS (SADDLES, SLOPES OR DIPS) WILL ADVERSELY AFFECT CLOSURE FIT & SEAL.

MATERIAL	TOLERANCE
PP / PE	± 0.0175
PET	± 0.012
GLASS	± 0.024

#	00.00.00	-	--
REV	DATE	DESCRIPTION	BY

Supplied By: **The Cary Company**
 Ph: 630-629-6600
 www.thecarycompany.com

PITCH (TPI): 5	# OF TURNS: 1-1/4	MATERIAL: PER CHART
DRAWING #: 110-400-FINISH		
DESCRIPTION: FINISH FOR USE WITH PCI 110-400 CLOSURES		
FILE: 110-400-FINISH.dwg	SCALE: 8 : 1	
DRAWN BY: BEZ	DATE: 11.17.97	APPRVD BY: LRE
		REV: 0 BF