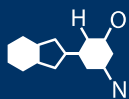


# IF YOU...



MIX IT. FILL IT. PACK IT. SHIP IT.

# WE HAVE A **PRODUCT** FOR YOU

Part #67W24F

Plastic Caps

---

24mm 24-400 White Ribbed (Matte Top) Plastic  
Cap w/HIS TE Liner for HDPE (Printed)

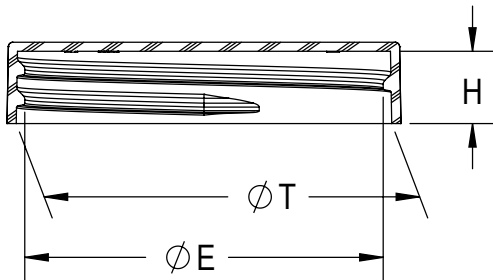
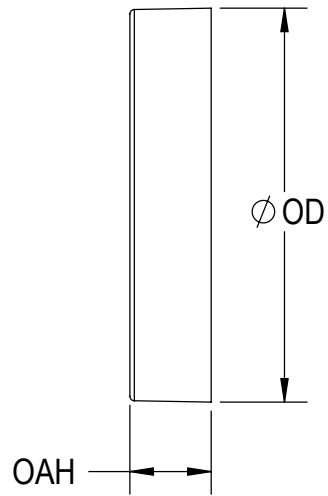
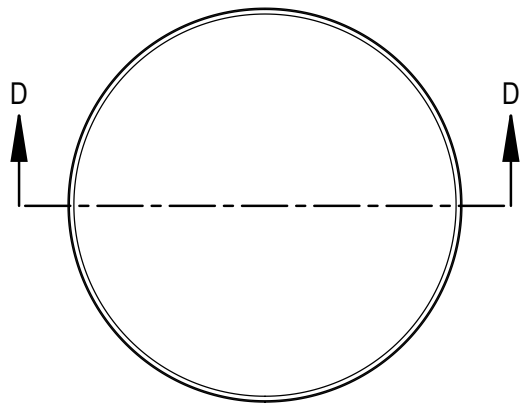
---



---

The  
**CARY**COMPANY  
Est. 1895

1195 W. Fullerton Ave. | Addison, IL 60101 | T: 630.629.6600 | F: 630.629.3690 | [TheCaryCompany.com](http://TheCaryCompany.com)



SECTION D-D

**THREAD DETAIL INFORMATION**  
6 THREADS PER INCH, 0.167 PITCH

REFERENCE	TOLERANCE	DIMENSION	UNITS
E	±0.015 [0.38]	1.984 [50.39]	in [mm]
T	±0.015 [0.38]	2.078 [52.78]	in [mm]
H	±0.010 [0.25]	0.400 [10.16]	in [mm]
OAH	±0.010 [0.25]	0.450 [11.43]	in [mm]
OD	±0.015 [0.38]	2.180 [55.37]	in [mm]
PART WEIGHT	± 0.80	5.10	g

STATIC TORQUE RECOMMENDATION  
**21-36 in-lbs**  
THIS REQUIREMENT MAY VARY DEPENDING UPON BOTTLE MATERIAL, NECK FINISH, AND CAPPING EQUIPMENT

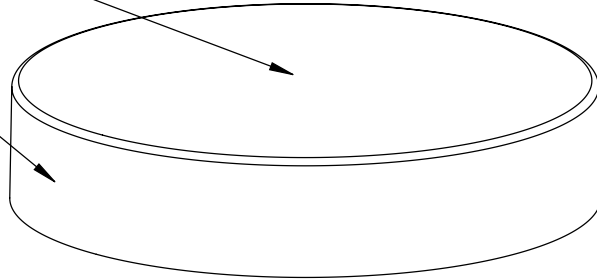
THE CLOSURE DIMENSIONS DEPICTED ARE THOSE WHICH HAVE GENERALLY BEEN FOUND TO BE FUNCTIONAL BASED ON INDUSTRY EXPERIENCE BECAUSE OF VARIABILITY IN GLASS AND PLASTIC CONTAINER FINISHES. EACH CLOSURE/FINISH SYSTEM SHOULD BE INDIVIDUALLY EVALUATED AND TESTED TO ENSURE IT MEETS APPLICABLE PERFORMANCE CRITERIA. SEE QUALITY ASSURANCE SPECIFICATIONS FOR ADDITIONAL INFORMATION.

DRAWING TYPE : <b>CUSTOMER</b>			
REPLACES DRAWINGS: C-1012		DIMENSIONS ENCLOSED IN ( ) INDICATE REFERENCE DIMENSIONS AND NO TOLERANCE LIMITS ARE ESTABLISHED	
TOLERANCES UNLESS OTHERWISE SPECIFIED			
DIMENSION (inches)	TOLERANCE	DIMENSION (mm)	TOLERANCE
0-0.787	±0.006	0-20	±0.152
0.788-1.181	±0.008	21-30	±0.203
1.182-2.756	±0.012	31-70	±0.305
2.757-3.937	±0.016	71-100	±0.406
3.938-5.096	±0.020	101-150	±0.508
5.097-7.874	±0.024	151-200	±0.610
7.875-9.843	±0.032	201-250	±0.813
ANGULAR TOLERANCE ± 2°			
PROPRIETARY AND CONFIDENTIAL			

THIRD ANGLE PROJECTION	DISTRIBUTION CODE	DRAWING NAME	
		53-400 CT S (SMOOTH SIDE, SMOOTH TOP)	
SOLIDWORKS	D	DRAWING NUMBER	
		CQA - 10509	
DRAWN BY.	DAS	3/1/2017	MATERIAL
ENG APPR.	JDM	4/4/2018	POLYPROPYLENE
QA APPR.	REL	05/02/2018	MODEL NUMBER: PM 10504 53-400 CT
		SCALE	SHEET SIZE
		1:1	8.5 X 11
		SHEET	REV.NP
		1 of 3	00.AB

REVISIONS					
DATE	REV.	N/P	DESCRIPTION	ENG	DRW
3/1/2017	00	AA	UPDATED DRAWING FORMAT AND ASSIGNED NEW DRAWING NUMBER	JDM	DAS
4/4/2018	00	AB	ADDED GATE LOCATION TABLE. SPECIFICATIONS UPDATED BASED ON PRODUCTION CAPABILITY. NO STEEL CHANGES HAVE OCCURED.	JDM	DAS

SEE TABLE FOR GATE LOCATION



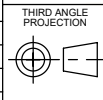
SMOOTH SIDES AND TOP



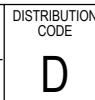
MOLD NUMBER	GATE LOCATION
53001	SIDE
53002	SIDE
53006	SIDE
53008	SIDE
53013	TOP

DRAWING TYPE : <b>CUSTOMER</b>			
REFERENCES: 53001, 53002, 53006, 53008, 53013		DIMENSIONS ENCLOSED IN ( ) INDICATE REFERENCE DIMENSIONS AND NO TOLERANCE LIMITS ARE ESTABLISHED	
TOLERANCES UNLESS OTHERWISE SPECIFIED			
DIMENSION (inches)	TOLERANCE	DIMENSION (mm)	TOLERANCE
0-0.787	±0.006	0-20	±0.152
0.788-1.181	±0.008	21-30	±0.203
1.182-2.756	±0.012	31-70	±0.305
2.757-3.937	±0.016	71-100	±0.406
3.938-5.096	±0.020	101-150	±0.508
5.097-7.874	±0.024	151-200	±0.610
7.875-9.843	±0.032	201-250	±0.813
ANGULAR TOLERANCE ± 2°			
PROPRIETARY AND CONFIDENTIAL			

THE CLOSURE DIMENSIONS DEPICTED ARE THOSE WHICH HAVE GENERALLY BEEN FOUND TO BE FUNCTIONAL BASED ON INDUSTRY EXPERIENCE BECAUSE OF VARIABILITY IN GLASS AND PLASTIC CONTAINER FINISHES. EACH CLOSURE/FINISH SYSTEM SHOULD BE INDIVIDUALLY EVALUATED AND TESTED TO ENSURE IT MEETS APPLICABLE PERFORMANCE CRITERIA. SEE QUALITY ASSURANCE SPECIFICATIONS FOR ADDITIONAL INFORMATION.

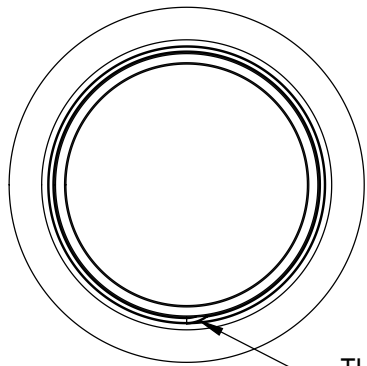


SOLIDWORKS

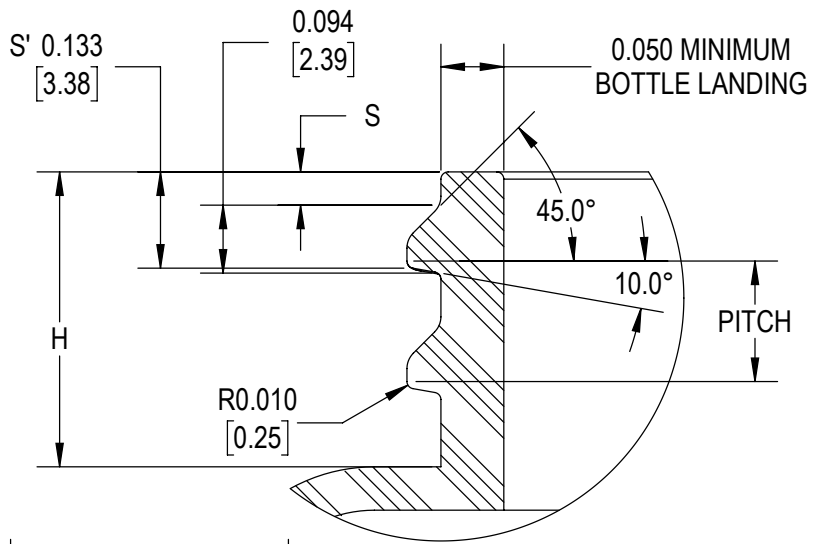


DRAWING NAME	53-400 CT S (SMOOTH SIDE, SMOOTH TOP)		
DRAWING NUMBER	CQA - 10509		
MATERIAL	POLYPROPYLENE		
MODEL NUMBER:	PM 10504 53-400 CT		
SCALE	SHEET SIZE	SHEET	REV.NP
3:2	8.5" X 11"	2 of 3	00.AB

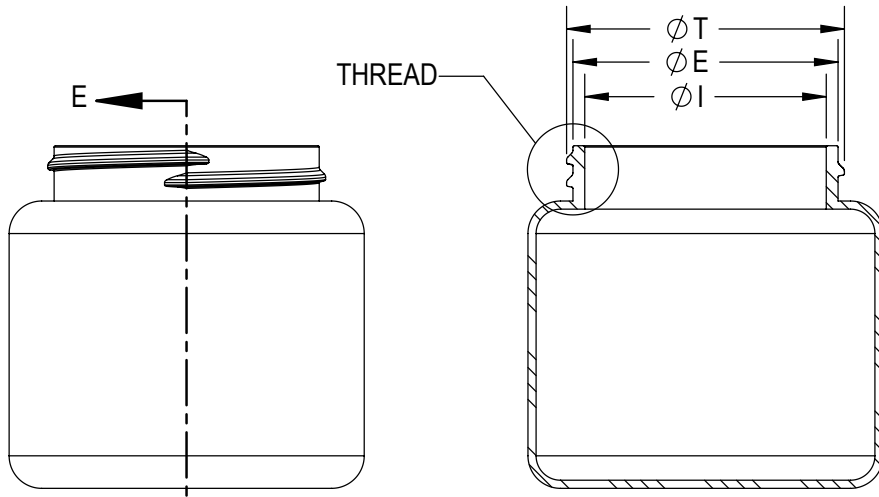
DRAWN BY.	DAS	3/1/2017
ENG APPR.	JDM	4/4/2018
QA APPR.	REL	05/02/2018



THREAD START



DETAIL THREAD SCALE 4 : 1



SECTION E-E

REFERENCE	TOLERANCE	UNITS	DIMENSION
E	±0.017 [0.43]	in [mm]	1.956 [49.68]
T	±0.017 [0.43]	in [mm]	2.050 [52.07]
I	MIN	in [mm]	1.578 [40.08]
S	±0.015 [0.38]	in [mm]	0.046 [1.17]
H	MIN	in [mm]	0.408 [10.36]
PITCH		in [mm]	6
TPI			0.167

NOTE: THE NOMINAL ORIENTATION ILLUSTRATED IS BASED ON NOMINAL DIMENSIONS OF BOTH THE CLOSURE AND THE RECOMMENDED NECK FINISH. FOR EXACT ORIENTATION EACH BOTTLE SHOULD BE EVALUATED ON A CASE BY CASE BASIS.

DRAWING TYPE : CUSTOMER

DIMENSIONS ENCLOSED IN ( ) INDICATE REFERENCE DIMENSIONS AND NO TOLERANCE LIMITS ARE ESTABLISHED

TOLERANCES UNLESS OTHERWISE SPECIFIED

DIMENSION (inches)	TOLERANCE	DIMENSION (mm)	TOLERANCE
0-0.787	±0.006	0-20	±0.152
0.788-1.181	±0.008	21-30	±0.203
1.182-2.756	±0.012	31-70	±0.305
2.757-3.937	±0.016	71-100	±0.406
3.938-5.096	±0.020	101-150	±0.508
5.097-7.874	±0.024	151-200	±0.610
7.875-9.843	±0.032	201-250	±0.813

ANGULAR TOLERANCE ± 2°

PROPRIETARY AND CONFIDENTIAL

THE CLOSURE DIMENSIONS DEPICTED ARE THOSE WHICH HAVE GENERALLY BEEN FOUND TO BE FUNCTIONAL BASED ON INDUSTRY EXPERIENCE BECAUSE OF VARIABILITY IN GLASS AND PLASTIC CONTAINER FINISHES. EACH CLOSURE/FINISH SYSTEM SHOULD BE INDIVIDUALLY EVALUATED AND TESTED TO ENSURE IT MEETS APPLICABLE PERFORMANCE CRITERIA. SEE QUALITY ASSURANCE SPECIFICATIONS FOR ADDITIONAL INFORMATION.



DISTRIBUTION CODE

D

DRAWING NAME  
53-400 CT  
RECOMMENDED NECK FINISH

DRAWING NUMBER  
CQA - 10509

DRAWN BY.	DAS	3/1/2017	MATERIAL			
ENG APPR.	JDM	4/4/2018	MODEL NUMBER:			
QA APPR.	REL	05/02/2018	SCALE	SHEET SIZE	SHEET	REV/N/P
			3:4	8.5X11	3 of 3	00.AB