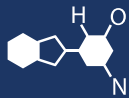


IF YOU...



MIX IT. FILL IT. PACK IT. SHIP IT.

WE HAVE A **PRODUCT** FOR YOU

Part #: 67W2BF

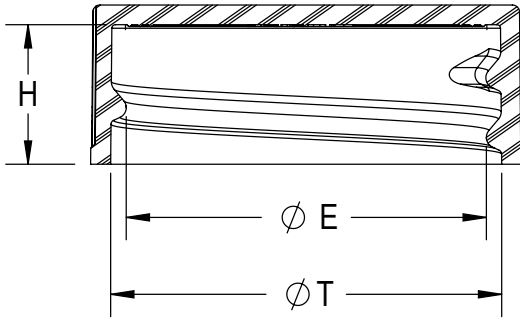
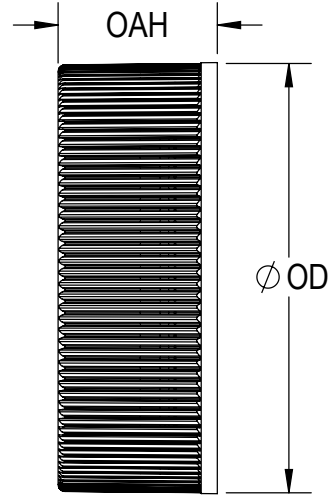
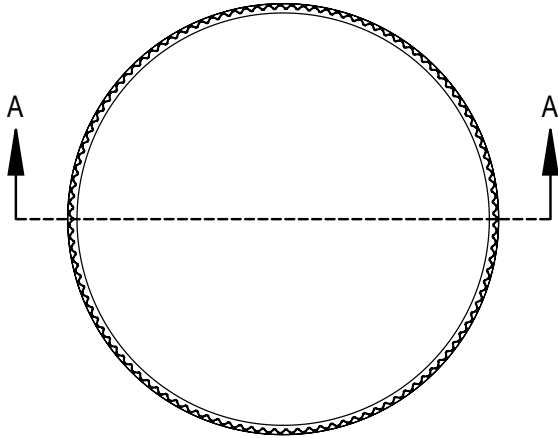
Continuous Thread Caps

28mm 28-400 Black Ribbed (Smooth Top) Plastic Cap
w/HIS TE Liner for PET/PVC



The
CARYCOMPANY
Est. 1895

1195 W. Fullerton Ave. | Addison, IL 60101 | T: 630.629.6600 | F: 630.629.3690 |



SECTION A-A

THREAD DETAILS:
6 THREADS PER INCH, 0.167" PITCH

REFERENCE	TOLERANCE	UNITS	DIMENSION
E	± 0.010 [0.25]	in [mm]	1.010 [25.65]
T	± 0.010 [0.25]	in [mm]	1.095 [27.81]
H	± 0.010 [0.25]	in [mm]	0.390 [9.91]
OAH	± 0.010 [0.25]	in [mm]	0.445 [11.30]
OD	± 0.010 [0.25]	in [mm]	1.205 [30.61]
PART WEIGHT	±0.15	g	1.93

STATIC TORQUE RECOMMENDATION
12-21 in-lbs
THIS REQUIREMENT MAY VARY DEPENDING
UPON BOTTLE MATERIAL, NECK FINISH, AND
CAPPING EQUIPMENT

DRAWING TYPE: CUSTOMER

REPLACES DRAWINGS:
C-3006

DIMENSIONS ENCLOSED IN ()
INDICATE REFERENCE
DIMENSIONS AND NO TOLERANCE
LIMITS ARE ESTABLISHED

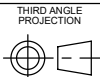
TOLERANCES UNLESS OTHERWISE SPECIFIED

DIMENSION (inches)	TOLERANCE	DIMENSION (mm)	TOLERANCE
0-0.787	±0.006	0-20	±0.152
0.788-1.181	±0.008	21-30	±0.203
1.182-2.756	±0.012	31-70	±0.305
2.757-3.937	±0.016	71-100	±0.406
3.938-5.096	±0.020	101-150	±0.508
5.097-7.874	±0.024	151-200	±0.610
7.875-9.843	±0.032	201-250	±0.813

ANGULAR TOLERANCE ± 2°

PROPRIETARY AND CONFIDENTIAL

The
CARY COMPANY
Est. 1895



SOLIDWORKS

DISTRIBUTION
CODE

D

DRAWING NAME

28-400 CT
RS (Ribbed Side - Smooth Top)

DRAWING NUMBER

CQA - 10172

MATERIAL

POLYPROPYLENE

MODEL NUMBER:

PM 10298 28-400 CT

DRAWN BY: JDM 2/23/2017

ENG APPR. JDM 2/5/2020

QA APPR. REL 02/28/2020

SCALE
1:1

SHEET SIZE
8.5" X 11"

SHEET
1 of 3

REV.NP
00.AD