

IF YOU...



MIX IT. FILL IT. PACK IT. SHIP IT.

WE HAVE A **PRODUCT** FOR YOU

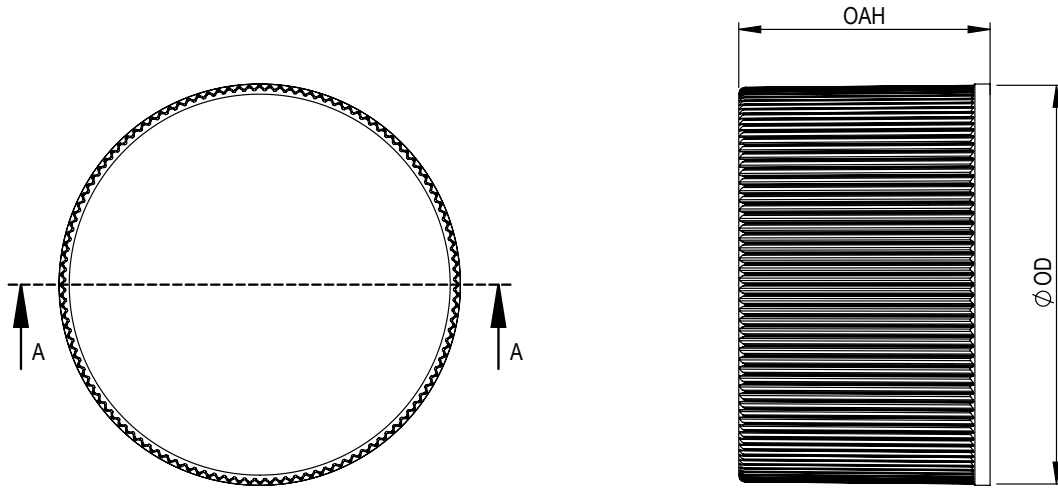
Part # 67W30F

Plastic Caps

28mm 28-410 Black Ribbed (Matte Top) Plastic Cap w/HIS
for HDPE



The
CARYCOMPANY
Est. 1895



SECTION A-A

STATIC TORQUE RECOMMENDATION: 12-21 in-lbs
REQUIREMENT MAY VARY DEPENDING UPON CONTAINER MATERIAL,
NECK FINISH, AND CAPPING EQUIPMENT

DIMENSIONS ENCLOSED IN () INDICATE REFERENCE DIMENSIONS
AND NO TOLERANCE LIMITS ARE ESTABLISHED

DIMENSIONS PRECEDED BY AN *** INDICATE THE DIMENSION IS
PROCESS SENSITIVE. PROCESS SENSITIVE DIMENSIONS ARE
VERIFIED TO BE WITHIN THE TOLERANCE LIMITS DURING THE
PRODUCTION RUN. ALL REMAINING DIMENSIONS ARE VERIFIED AT
PRODUCTION VALIDATION.

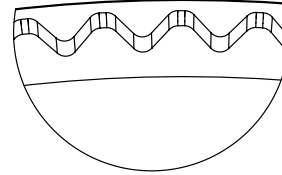
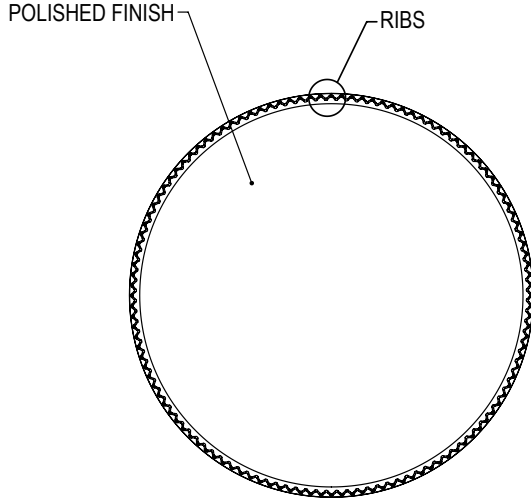
THIS MASTER DOCUMENT IS CONTROLLED ELECTRONICALLY.
PRINTED OR DOWNLOADED COPIES ARE UNCONTROLLED.
DOCUMENT USERS ARE RESPONSIBLE FOR ENSURING THEY HAVE
THE LATEST REVISION PRIOR TO USE.

THE PART DIMENSIONS DEPICTED ARE THOSE WHICH HAVE GENERALLY BEEN FOUND TO BE FUNCTIONAL BASED ON INDUSTRY EXPERIENCE.
BECAUSE OF VARIABILITY IN CONTAINER FINISHES, EACH CLOSURE/FINISH SYSTEM SHOULD BE INDIVIDUALLY EVALUATED AND TESTED TO
ENSURE IT MEETS APPLICABLE PERFORMANCE CRITERIA.

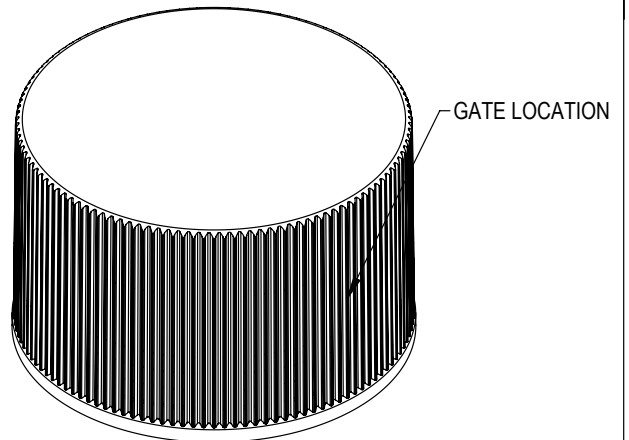
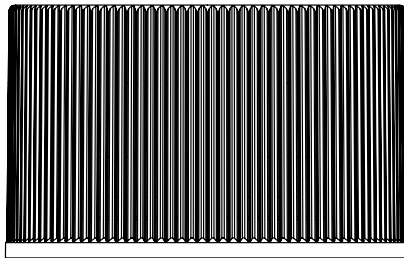
REFERENCE	DIMENSION	TOLERANCE	UNITS
E	1.013 [25.73]	±0.010 [0.25]	in [mm]
T	1.088 [27.64]	±0.010 [0.25]	in [mm]
H	0.695 [17.65]	±0.010 [0.25]	in [mm]
OAH	0.745 [18.92]	±0.010 [0.25]	in [mm]
OD	1.197 [30.40]	±0.010 [0.25]	in [mm]
PART WEIGHT	2.55	±0.50	g

THREAD DETAIL INFORMATION:	6 THREADS PER INCH	0.167" [4.09] PITCH	495°	FULL DEPTH THREADS
DRAWN BY:				
ENG APPR:				
QA APPR:				

DRAWING TITLE:			
28-410 CT Closure RL (Ribbed Side)			
MATERIAL: POLYPROPYLENE			
DRAWING TYPE: CUSTOMER		DISTRIBUTION CODE: D	
REPLACES DRAWINGS: C-8030			
MODEL NUMBER:			
DWG SIZE: 8.5" x 11"	DRAWING NUMBER:	REVISION:	
SCALE: 1:1 & NOTED	SHEET: 1 OF 3	00.AB	



DETAIL RIBS
SCALE 15 : 1
(120) EQUISPACED RIBS



DIMENSIONS ENCLOSED IN () INDICATE REFERENCE DIMENSIONS AND NO TOLERANCE LIMITS ARE ESTABLISHED

THE PART DIMENSIONS DEPICTED ARE THOSE WHICH HAVE GENERALLY BEEN FOUND TO BE FUNCTIONAL BASED ON INDUSTRY EXPERIENCE BECAUSE OF VARIABILITY IN CONTAINER FINISHES, EACH CLOSURE/FINISH SYSTEM SHOULD BE INDIVIDUALLY EVALUATED AND TESTED TO ENSURE IT MEETS APPLICABLE PERFORMANCE CRITERIA.

DATE	REV	N/P	DESCRIPTION
	00	AB	CORRECTED TOP SURFACE MOLD FINISH TO REFLECT MOLDED PARTS. NO STEEL/PART CHANGES HAVE OCCURRED
	00	AA	DRAWING UPDATED TO REFLECT HISTORICAL RUN DATA & PROCESS CAPABILITY. NO CHANGES TO THE STEEL OR PART HAVE OCCURRED

REVISION HISTORY

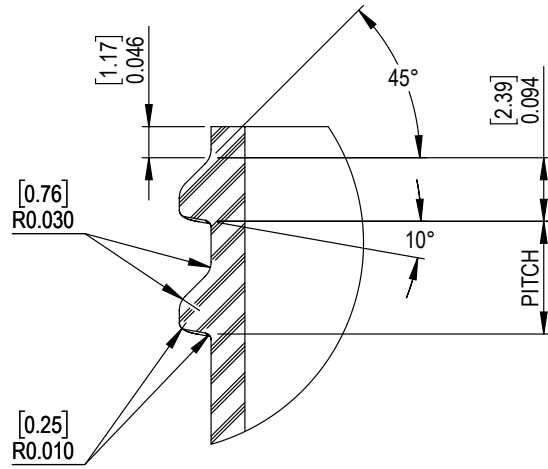
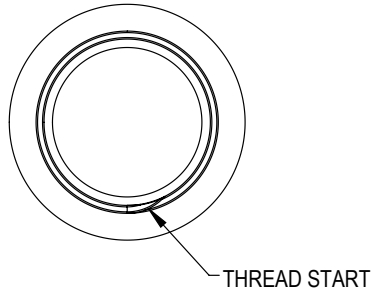
REVISIONS: REV: A PHYSICAL CHANGE TO THE PART IMPACTING FIT, FORM OR FUNCTION
N/P: DRAWING OR SPECIFICATION CHANGE ONLY

DRAWING TITLE:

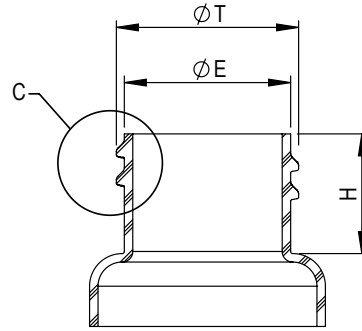
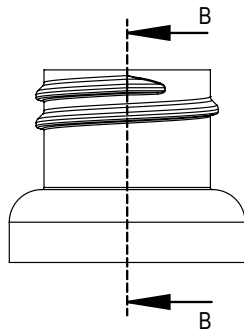
28-410 CT Closure
RL (Ribbed Side)

THIS MASTER DOCUMENT IS CONTROLLED ELECTRONICALLY. PRINTED OR DOWNLOADED COPIES ARE UNCONTROLLED. DOCUMENT USERS ARE RESPONSIBLE FOR ENSURING THEY HAVE THE LATEST REVISION PRIOR TO USE.

DRAWING TYPE: CUSTOMER	DISTRIBUTION CODE: D
DWG SIZE: 8.5" x 11"	DRAWING NUMBER:
SCALE: 1:1 & NOTED	SHEET: 2 OF 3
REVISION: 00.AB	



DETAIL C
SCALE 4 : 1
THREAD DETAIL



SECTION B-B

NECK FINISH DIMENSIONS ASSUME ZERO THICKNESS (NO) LINER					DRAWING TITLE: 28-410 CT Closure RL (Ribbed Side) RECOMMENDED NECK FINISH THIS MASTER DOCUMENT IS CONTROLLED ELECTRONICALLY. PRINTED OR DOWNLOADED COPIES ARE UNCONTROLLED. DOCUMENT USERS ARE RESPONSIBLE FOR ENSURING THEY HAVE THE LATEST REVISION PRIOR TO USE. DRAWING TYPE: CUSTOMER DISTRIBUTION CODE: D DWG SIZE: 8.5" x 11" DRAWING NUMBER: REVISION: SCALE: 1:1 & NOTED SHEET: 3 OF 3 00.AB
REFERENCE	DIMENSION	TOLERANCE	UNITS		
Ø E	0.984 [24.99]	± 0.010 [0.25]	in [mm]		
Ø T	1.068 [27.13]	± 0.010 [0.25]	in [mm]		
S	0.046 [1.17]	±0.015 [0.38]	in [mm]		
H	0.705 [17.91]	MINIMUM	in [mm]		
THREADS PER INCH	6				
PITCH	0.167 [4.23]		in [mm]		
NOMINAL ORIENTATION OF CLOSURE (IF INDICATED) IS BASED ON NOMINAL DIMENSIONS OF BOTH CLOSURE AND RECOMMENDED NECK FINISH. FOR EXACT ORIENTATION, EACH CONTAINER SHOULD BE EVALUATED ON A CASE BY CASE BASIS.					
DIMENSIONS ENCLOSED IN () INDICATE REFERENCE DIMENSIONS AND NO TOLERANCE LIMITS ARE ESTABLISHED					
THE PART DIMENSIONS DEPICTED ARE THOSE WHICH HAVE GENERALLY BEEN FOUND TO BE FUNCTIONAL BASED ON INDUSTRY EXPERIENCE. BECAUSE OF VARIABILITY IN CONTAINER FINISHES, EACH CLOSURE/FINISH SYSTEM SHOULD BE INDIVIDUALLY EVALUATED AND TESTED TO ENSURE IT MEETS APPLICABLE PERFORMANCE CRITERIA.					