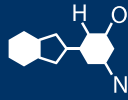


IF YOU...



MIX IT. FILL IT. PACK IT. SHIP IT.

WE HAVE A **PRODUCT** FOR YOU

Part #: 67W32B

Plastic Straight Sided Jars

**32 oz. Black HDPE Plastic Jar, Straight Sided,
Flat, 89mm 89-400, 73 Grams**

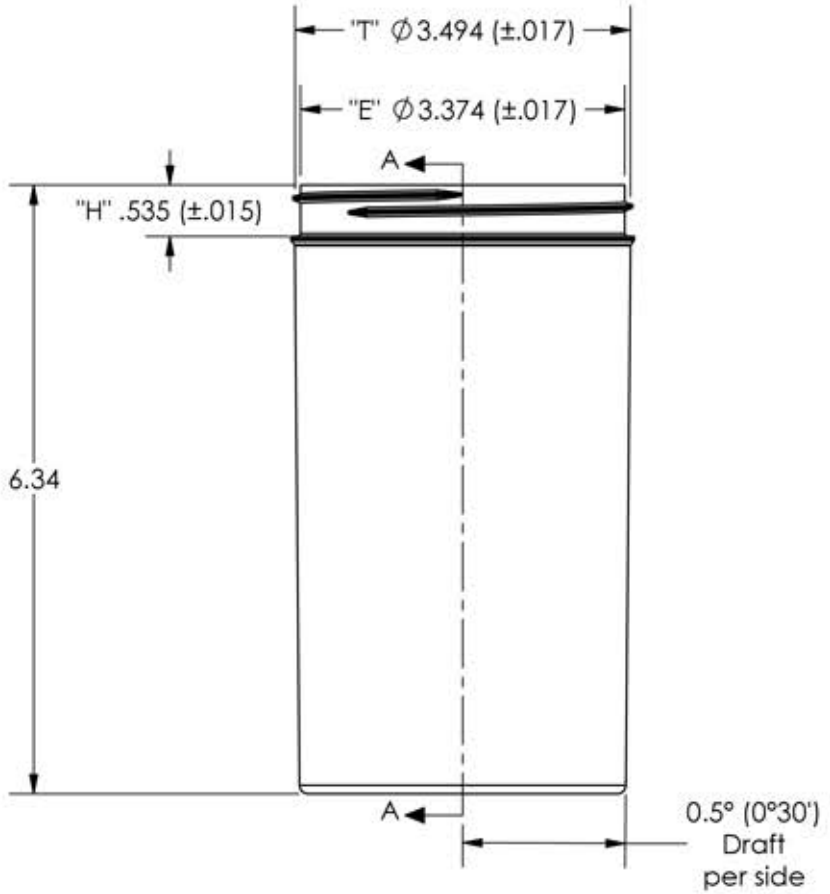


The
CARYCOMPANY
Est. 1895

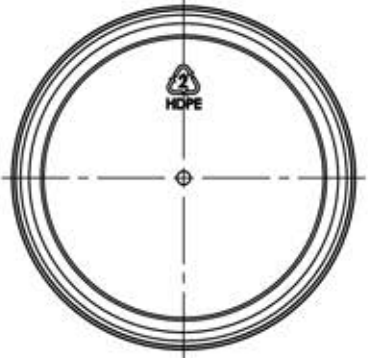
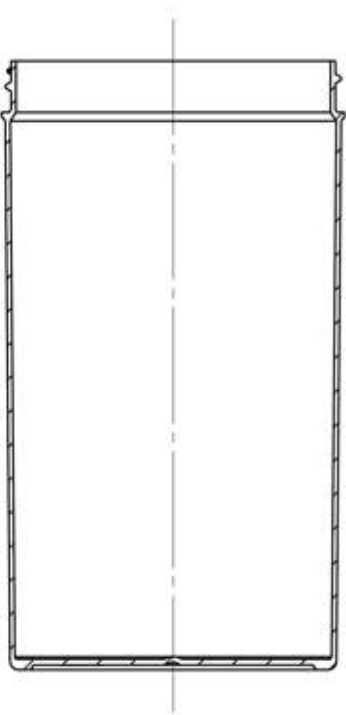
1195 W. Fullerton Ave. | Addison, IL 60101 | T: 630.629.6600 | F: 630.629.3690 | TheCaryCompany.com

NOTE:

PROPRIETARY AND CONFIDENTIAL



SECTION A-A



DRAWING NAME: PART DWG - JSL3289HD - MSI001-008			
PART NAME: 32 oz 89 mm Style Line Jar		PART #: JSL3289HD:MSI001-008	
		2012	REV: B
		BY: J.K.	DATE: 9/17/2012
		CHECKED: J.K./S.B.	12/28/2012
		APPROVED: S.B.	12/28/2012
		DIMENSIONS ARE IN INCHES	
THREAD PITCH: 5 T.P.I.	# OF THREAD TURNS: 1-1/8 TURNS	TOLERANCES (UNLESS SPECIFIED)	.00 = ±.015 .000 = ±.010
DRAFT ANGLE: $0.5^\circ (0^\circ 30')$ Degree	PROJECTED COSMETIC FILL: 850 (±15) mL 28.74 (±.51) oz	ANGULAR TOLERANCE	± 1/2 DEGREE
GATE LOCATION: EXTERIOR - CENTER	PROJECTED OVERFLOW: 929 (±15) mL 31.41 (±.51) oz	THIRD ANGLE PROJECTION	
MATERIAL: HDPE	PART WEIGHT: 73.8 Grams (±5%)	SHEET SCALE: FULL	SHEET SIZE: A