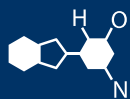


# IF YOU...



MIX IT. FILL IT. PACK IT. SHIP IT.

# WE HAVE A **PRODUCT** FOR YOU

Part # 67W458

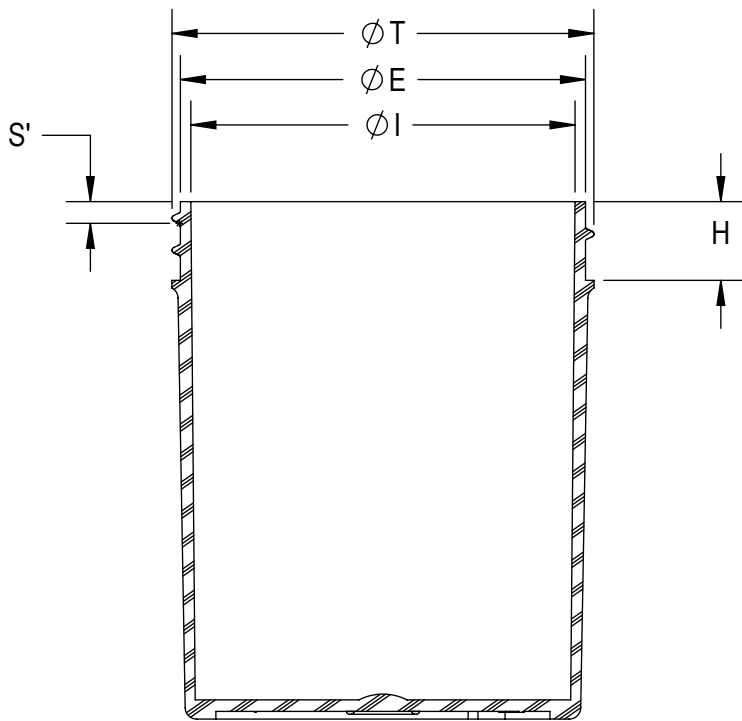
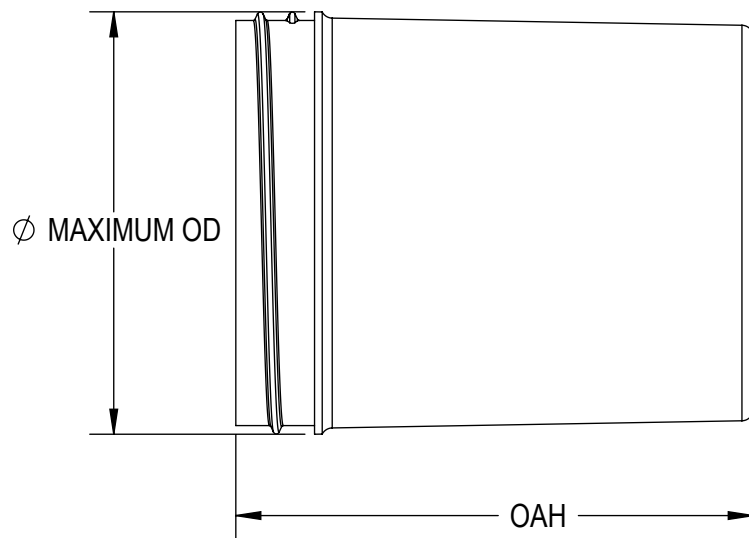
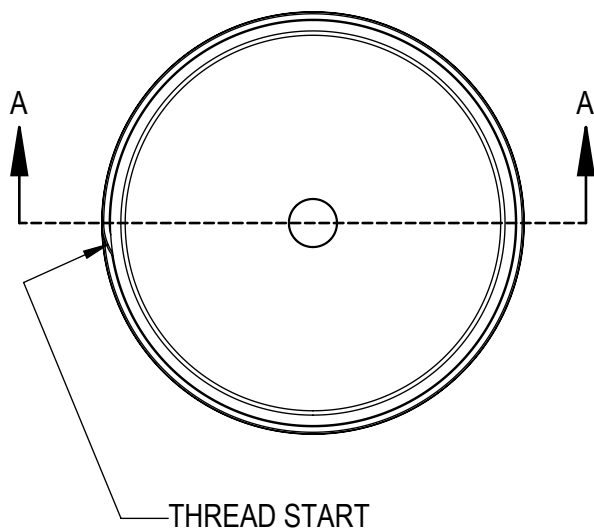
Plastic Straight Sided Jars

4 oz. Clear PS Plastic Jar,  
Straight Sided, 58mm 58-400



The  
**CARY**COMPANY  
Est. 1895

1195 W. Fullerton Ave. | Addison, IL 60101 | T: 630.629.6600 | F: 630.629.3690 | [TheCaryCompany.com](http://TheCaryCompany.com)



SECTION A-A

**THREAD DETAIL INFORMATION**  
 6 THREADS PER INCH, 0.167 PITCH  
 45° (1 1/4 TURNS FULL DEPTH THREAD)

REFERENCE	TOLERANCE	DIMENSION	UNITS
E	±0.017 [0.43]	2.110 [53.59]	in [mm]
T	±0.017 [0.43]	2.205 [56.01]	in [mm]
I	±0.017 [0.43]	2.015 [51.18]	in [mm]
S'	±0.015 [0.38]	0.104 [2.64]	in [mm]
OAH	±0.015 [0.38]	2.699 [68.55]	in [mm]
H	±0.015 [0.38]	0.410 [10.41]	in [mm]
MAXIMUM OD	±0.017 [0.43]	2.258 [57.35]	in [mm]
PART WEIGHT	±1.50	19.20	g
FILL VOLUME	±5%	4.4 [130]	oz [cc]

STATIC TORQUE RECOMMENDATION  
**23-40 in-lbs**  
 THIS REQUIREMENT MAY VARY DEPENDING  
 UPON BOTTLE MATERIAL, NECK FINISH, AND  
 CAPPING EQUIPMENT

DRAWING TYPE : CUSTOMER

REPLACES DRAWINGS:  
 J-2010

DIMENSIONS ENCLOSED IN ( )  
 INDICATE REFERENCE  
 DIMENSIONS AND NO TOLERANCE  
 LIMITS ARE ESTABLISHED

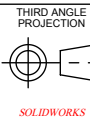
TOLERANCES UNLESS OTHERWISE SPECIFIED

DIMENSION (inches)	TOLERANCE	DIMENSION (mm)	TOLERANCE
0-0.787	±0.006	0-20	±0.152
0.788-1.181	±0.008	21-30	±0.203
1.182-2.756	±0.012	31-70	±0.305
2.757-3.937	±0.016	71-100	±0.406
3.938-5.096	±0.020	101-150	±0.508
5.097-7.874	±0.024	151-200	±0.610
7.875-9.843	±0.032	201-250	±0.813

ANGULAR TOLERANCE ± 2°

PROPRIETARY AND CONFIDENTIAL

The  
**CARY COMPANY**  
 Est. 1895



DISTRIBUTION CODE  
**D**

DRAWING NAME  
**4oz 58mm Jar  
 Regular Wall PS**

DRAWING NUMBER  
**CQA - 10697**

MATERIAL  
**POLYSTYRENE**

MODEL NUMBER:  
**PM 11075 4oz 58mm Jar**

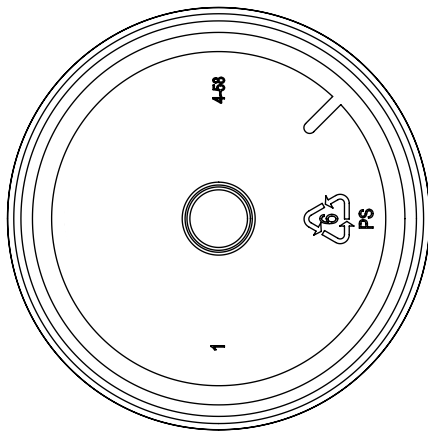
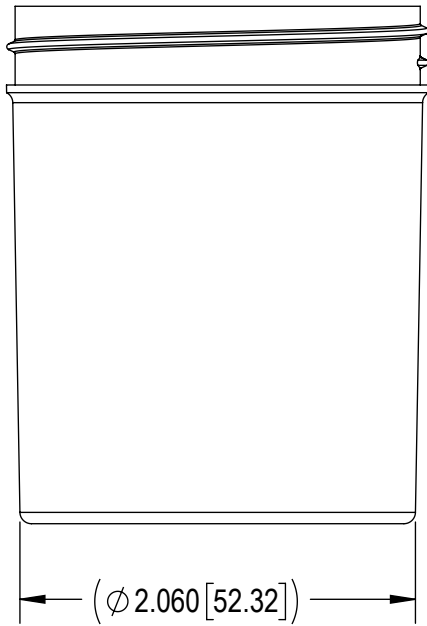
DRAWN BY: DAS 8/29/2016

ENG APPR: JDM 1/16/2019

QA APPR: REL 04/29/2019

SCALE	SHEET SIZE	SHEET	REV NP
1:1	8.5in*11in	1 of 2	00.AA

DATE	REV	N/P	DESCRIPTION	ENG	DRWN
11/08/2018	00	AA	DRAWING UPDATED TO REFLECT HISTORICAL RUN DATA & PROCESS CAPABILITY. NO CHANGES TO THE STEEL OR PART HAVE OCCURRED	JDM	DAS



DRAWING TYPE : CUSTOMER			
REFERENCES: 580403		DIMENSIONS ENCLOSED IN ( ) INDICATE REFERENCE DIMENSIONS AND NO TOLERANCE LIMITS ARE ESTABLISHED	
TOLERANCES UNLESS OTHERWISE SPECIFIED			
DIMENSION (inches)	TOLERANCE	DIMENSION (mm)	TOLERANCE
0-0.787	±0.006	0-20	±0.152
0.788-1.181	±0.008	21-30	±0.203
1.182-2.756	±0.012	31-70	±0.305
2.757-3.937	±0.016	71-100	±0.406
3.938-5.096	±0.020	101-150	±0.508
5.097-7.874	±0.024	151-200	±0.610
7.875-9.843	±0.032	201-250	±0.813
ANGULAR TOLERANCE ± 2°			
PROPRIETARY AND CONFIDENTIAL			

The  
**CARY COMPANY**  
Est. 1895

THIRD ANGLE PROJECTION		DISTRIBUTION CODE <b>D</b>		DRAWING NAME <b>4oz 58mm Jar Regular Wall PS</b>			
DRAWN BY: DAS		8/29/2016		DRAWING NUMBER <b>CQA - 10697</b>			
ENG APPR: JDM		1/16/2019		MATERIAL <b>POLYSTYRENE</b>			
QA APPR: REL		04/29/2019		MODEL NUMBER: <b>PM 11075 4oz 58mm Jar</b>			
		SCALE <b>1:1</b>		SHEET SIZE <b>8.5 X 11</b>		SHEET <b>2 of 2</b>	REV.NP <b>00.AA</b>