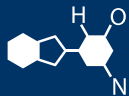


IF YOU...



MIX IT. FILL IT. PACK IT. SHIP IT.

WE HAVE A PRODUCT FOR YOU

Part #67W48S

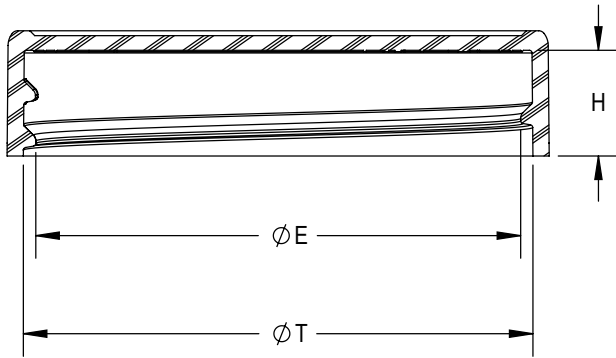
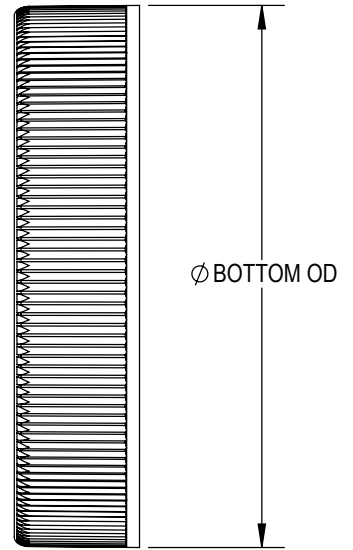
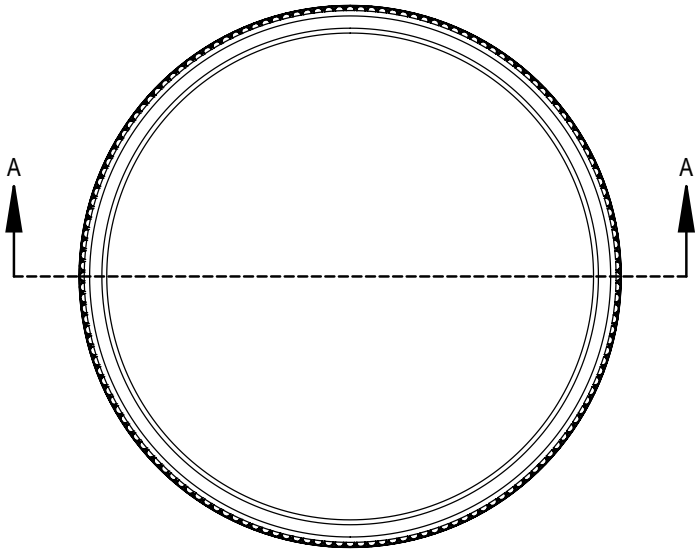
Plastic Caps

**48mm 48-400 White Ribbed (Matte Top)
Plastic Cap w/PS22 Liner (Printed)**



The
CARYCOMPANY
Est. 1895

1195 W. Fullerton Ave. | Addison, IL 60101 | T: 630.629.6600 | F: 630.629.3690 | TheCaryCompany.com



SECTION A-A
SCALE 1.5 : 1

THREAD DETAIL INFORMATION
6 THREADS PER INCH, 0.167 PITCH
360° FULL DEPTH THREAD

REFERENCE	TOLERANCE	DIMENSION	UNITS
E	±0.010 [0.25]	1.788 [45.42]	in [mm]
T	±0.010 [0.25]	1.880 [47.75]	in [mm]
H	±0.010 [0.25]	0.390 [9.91]	in [mm]
OAH	±0.010 [0.25]	0.465 [11.81]	in [mm]
BOTTOM OD	±0.012 [0.30]	2.000 [50.80]	in [mm]
PART WEIGHT	± 1.0	4.2	g

STATIC TORQUE RECOMMENDATION
19-30 in-lbs
THIS REQUIREMENT MAY VARY DEPENDING UPON BOTTLE MATERIAL, NECK FINISH, AND CAPPING EQUIPMENT

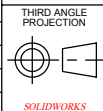
THE CLOSURE DIMENSIONS DEPICTED ARE THOSE WHICH HAVE GENERALLY BEEN FOUND TO BE FUNCTIONAL BASED ON INDUSTRY EXPERIENCE BECAUSE OF VARIABILITY IN GLASS AND PLASTIC CONTAINER FINISHES. EACH CLOSURE/FINISH SYSTEM SHOULD BE INDIVIDUALLY EVALUATED AND TESTED TO ENSURE IT MEETS APPLICABLE PERFORMANCE CRITERIA. SEE QUALITY ASSURANCE SPECIFICATIONS FOR ADDITIONAL INFORMATION.

DRAWING TYPE : **CUSTOMER**

REPLACES DRAWINGS: C-4011
DIMENSIONS ENCLOSED IN () INDICATE REFERENCE DIMENSIONS AND NO TOLERANCE LIMITS ARE ESTABLISHED

TOLERANCES UNLESS OTHERWISE SPECIFIED			
DIMENSION (inches)	TOLERANCE	DIMENSION (mm)	TOLERANCE
0-0.787	±0.006	0-20	±0.152
0.788-1.181	±0.008	21-30	±0.203
1.182-2.756	±0.012	31-70	±0.305
2.757-3.937	±0.016	71-100	±0.406
3.938-5.096	±0.020	101-150	±0.508
5.097-7.874	±0.024	151-200	±0.610
7.875-9.843	±0.032	201-250	±0.813

ANGULAR TOLERANCE ± 2°
PROPRIETARY AND CONFIDENTIAL



DISTRIBUTION CODE
D

DRAWING NAME
48-400 CT Closure
RM (Ribbed-Matte-Stacking)

DRAWING NUMBER
CQA - 10168

DRAWN BY: JDM 8/17/2016

MATERIAL
POLYPROPYLENE

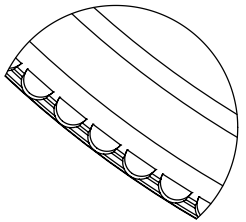
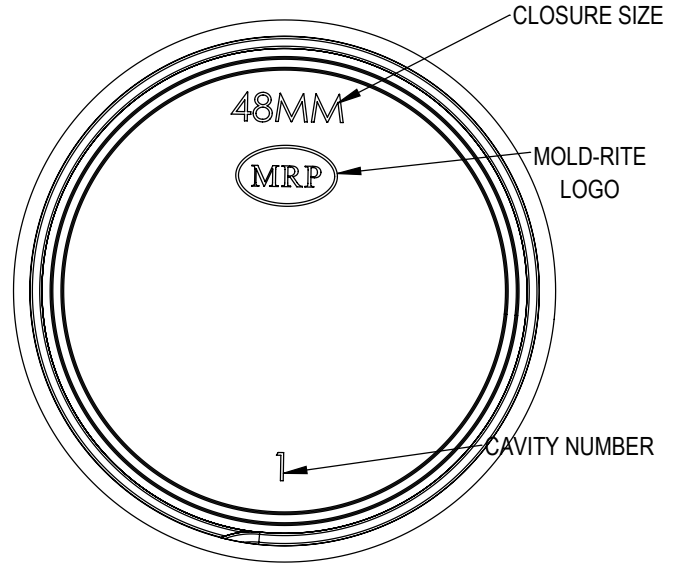
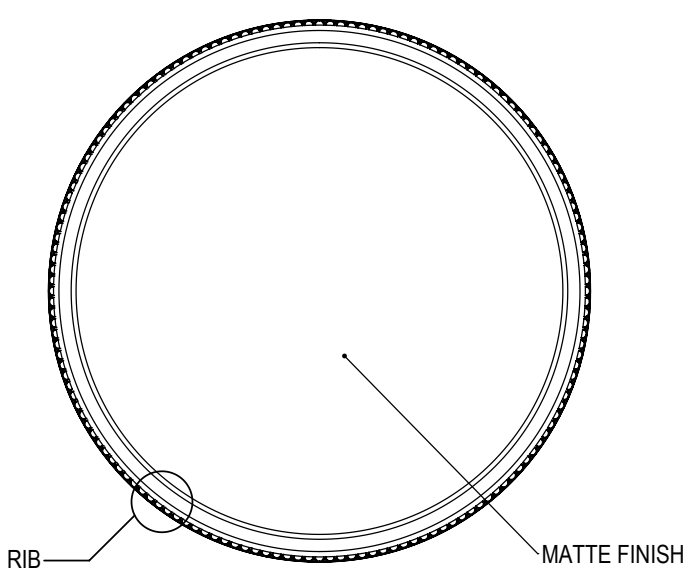
ENG APPR: JDM 10/17/2016

MODEL NUMBER
PM 10328 48-400 CT

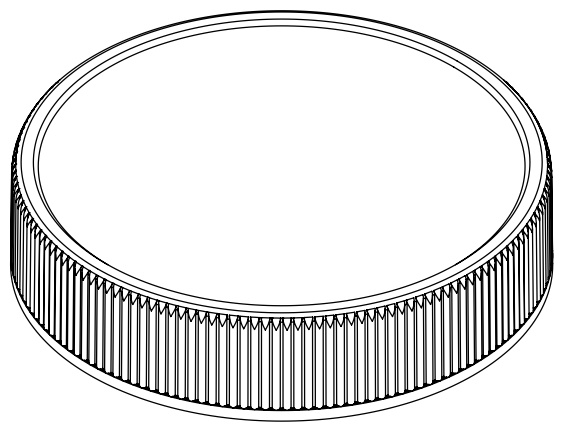
QA APPR: ACP 10/18/2016

SCALE	SHEET SIZE	SHEET	REV.NP
3:2	8.5in*11in	1 of 3	00.AB

REVISIONS					
DATE	REV.	N/P	DESCRIPTION	ENG	DRW
7/22/15	00	AA	REDRAWN IN NEW FORMAT - SEE C-4011 FOR REVISION HISTORY	CDB	CBD
8/18/2016	00	AB	CORRECTED "OD" NOMINAL AND TOLERANCE FROM HISTORICAL DATA REVIEW TO 2.000" (WAS 1.995"), UPDATED DRAWING LAYOUT	JDM	JDM



DETAIL RIB
156 EQUISPACED RIBS
SCALE 6 : 1



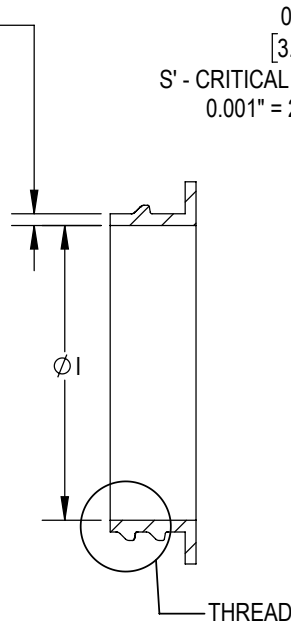
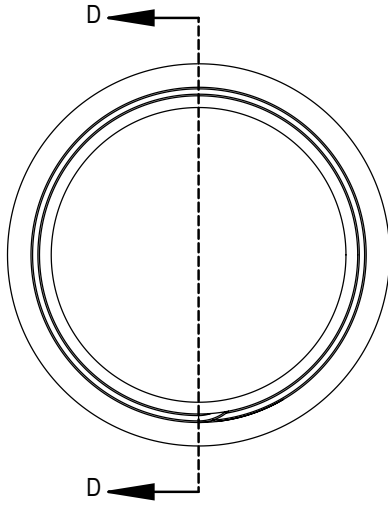
THE CLOSURE DIMENSIONS DEPICTED ARE THOSE WHICH HAVE GENERALLY BEEN FOUND TO BE FUNCTIONAL BASED ON INDUSTRY EXPERIENCE BECAUSE OF VARIABILITY IN GLASS AND PLASTIC CONTAINER FINISHES. EACH CLOSURE/FINISH SYSTEM SHOULD BE INDIVIDUALLY EVALUATED AND TESTED TO ENSURE IT MEETS APPLICABLE PERFORMANCE CRITERIA. SEE QUALITY ASSURANCE SPECIFICATIONS FOR ADDITIONAL INFORMATION.

DRAWING TYPE : CUSTOMER			
REFERENCES: 48001, 48003, 48004		DIMENSIONS ENCLOSED IN () INDICATE REFERENCE DIMENSIONS AND NO TOLERANCE LIMITS ARE ESTABLISHED	
TOLERANCES UNLESS OTHERWISE SPECIFIED			
DIMENSION (inches)	TOLERANCE	DIMENSION (mm)	TOLERANCE
0-0.787	±0.006	0-20	±0.152
0.788-1.181	±0.008	21-30	±0.203
1.182-2.756	±0.012	31-70	±0.305
2.757-3.937	±0.016	71-100	±0.406
3.938-5.096	±0.020	101-150	±0.508
5.097-7.874	±0.024	151-200	±0.610
7.875-9.843	±0.032	201-250	±0.813
ANGULAR TOLERANCE ± 2°			
PROPRIETARY AND CONFIDENTIAL			

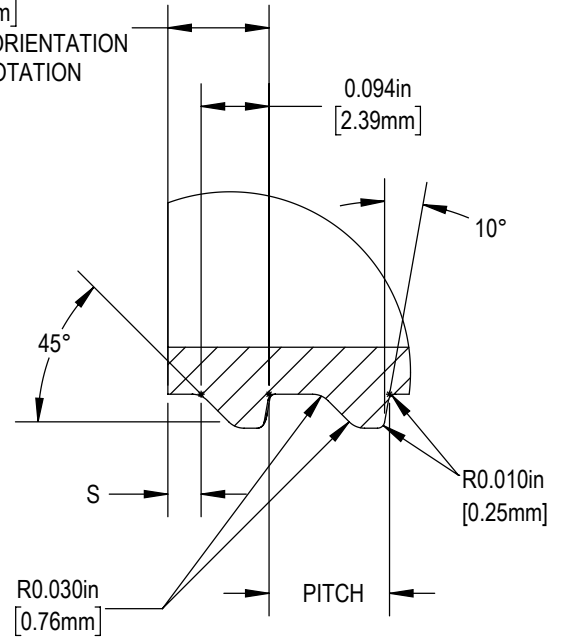
THIRD ANGLE PROJECTION	DISTRIBUTION CODE	DRAWING NAME	
	D	48-400 CT Closure RM (Ribbed-Matte-Stacking)	
DRAWING NUMBER		CQA - 10168	
DRAWN BY.	JDM	8/17/2016	MATERIAL
ENG APPR.	JDM	10/17/2016	POLYPROPYLENE
QA APPR.	ACP	10/18/2016	MODEL NUMBER
			PM 10328 48-400 CT
		SCALE	SHEET SIZE
		3:2	8.5in*11in
		SHEET	REV.NP
		2 of 3	00.AB

RECOMMENDED NECK FINISH

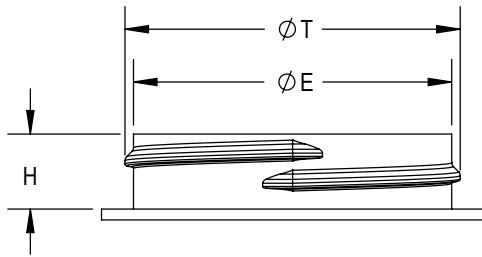
0.050 [1.27] MINIMUM RECOMMENDED FLAT FOR PROPER INDUCTION SEAL



SECTION D-D
SCALE 1 : 1



DETAIL THREAD
SCALE 4 : 1



REFERENCE	TOLERANCE	UNITS	DIMENSION
E	±0.015 [0.38]	in [mm]	1.761 [44.73]
T	±0.015 [0.38]	in [mm]	1.855 [47.12]
I	MINIMUM	in [mm]	1.631 [41.43]
H	MINIMUM (WITHOUT LINER)	in [mm]	0.390 [9.91]
S	±0.015 [0.38]	in [mm]	0.046 [1.17]
TPI			6
PITCH		in [mm]	0.167 [4.24]

NOTE: THE NOMINAL ORIENTATION ILLUSTRATED IS BASED ON NOMINAL DIMENSIONS OF BOTH THE CLOSURE AND THE RECOMMENDED NECK FINISH. FOR EXACT ORIENTATION EACH BOTTLE SHOULD BE EVALUATED ON A CASE BY CASE BASIS.

DRAWING TYPE : CUSTOMER

DIMENSIONS ENCLOSED IN () INDICATE REFERENCE DIMENSIONS AND NO TOLERANCE LIMITS ARE ESTABLISHED

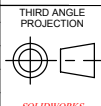
TOLERANCES UNLESS OTHERWISE SPECIFIED

DIMENSION (inches)	TOLERANCE	DIMENSION (mm)	TOLERANCE
0-0.787	±0.006	0-20	±0.152
0.788-1.181	±0.008	21-30	±0.203
1.182-2.756	±0.012	31-70	±0.305
2.757-3.937	±0.016	71-100	±0.406
3.938-5.096	±0.020	101-150	±0.508
5.097-7.874	±0.024	151-200	±0.610
7.875-9.843	±0.032	201-250	±0.813

ANGULAR TOLERANCE ± 2°

PROPRIETARY AND CONFIDENTIAL

THE CLOSURE DIMENSIONS DEPICTED ARE THOSE WHICH HAVE GENERALLY BEEN FOUND TO BE FUNCTIONAL BASED ON INDUSTRY EXPERIENCE BECAUSE OF VARIABILITY IN GLASS AND PLASTIC CONTAINER FINISHES. EACH CLOSURE/FINISH SYSTEM SHOULD BE INDIVIDUALLY EVALUATED AND TESTED TO ENSURE IT MEETS APPLICABLE PERFORMANCE CRITERIA. SEE QUALITY ASSURANCE SPECIFICATIONS FOR ADDITIONAL INFORMATION.



THIRD ANGLE PROJECTION



DISTRIBUTION CODE

D

DRAWING NAME

48-400 CT Closure RNF

DRAWING NUMBER

CQA - 10168

DRAWN BY.

JDM

8/17/2016

MATERIAL

ENG APPR.

JDM

10/17/2016

MODEL NUMBER:

QA APPR.

ACP

10/18/2016

SCALE

1:1

SHEET SIZE

8.5in*11in

SHEET

3 of 3

REV.N/P

00.AB