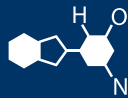


IF YOU...



MIX IT. FILL IT. PACK IT. SHIP IT.

WE HAVE A **PRODUCT** FOR YOU

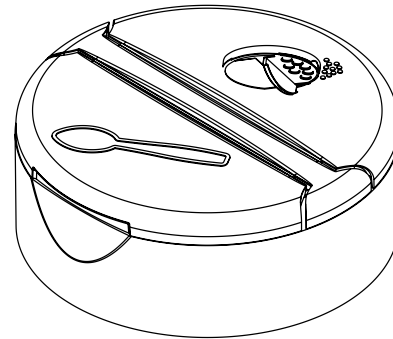
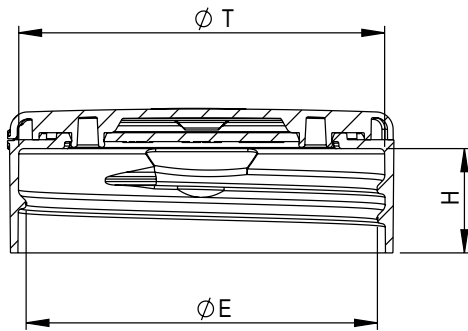
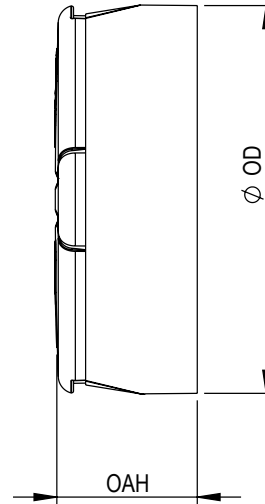
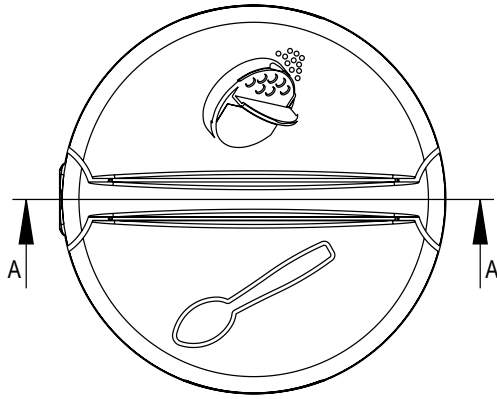
Part #67W54F

Flapper Caps

53mm 53-485 White Dual Flapper Cap, 13 Holes,
Pressure Sensitive Liner

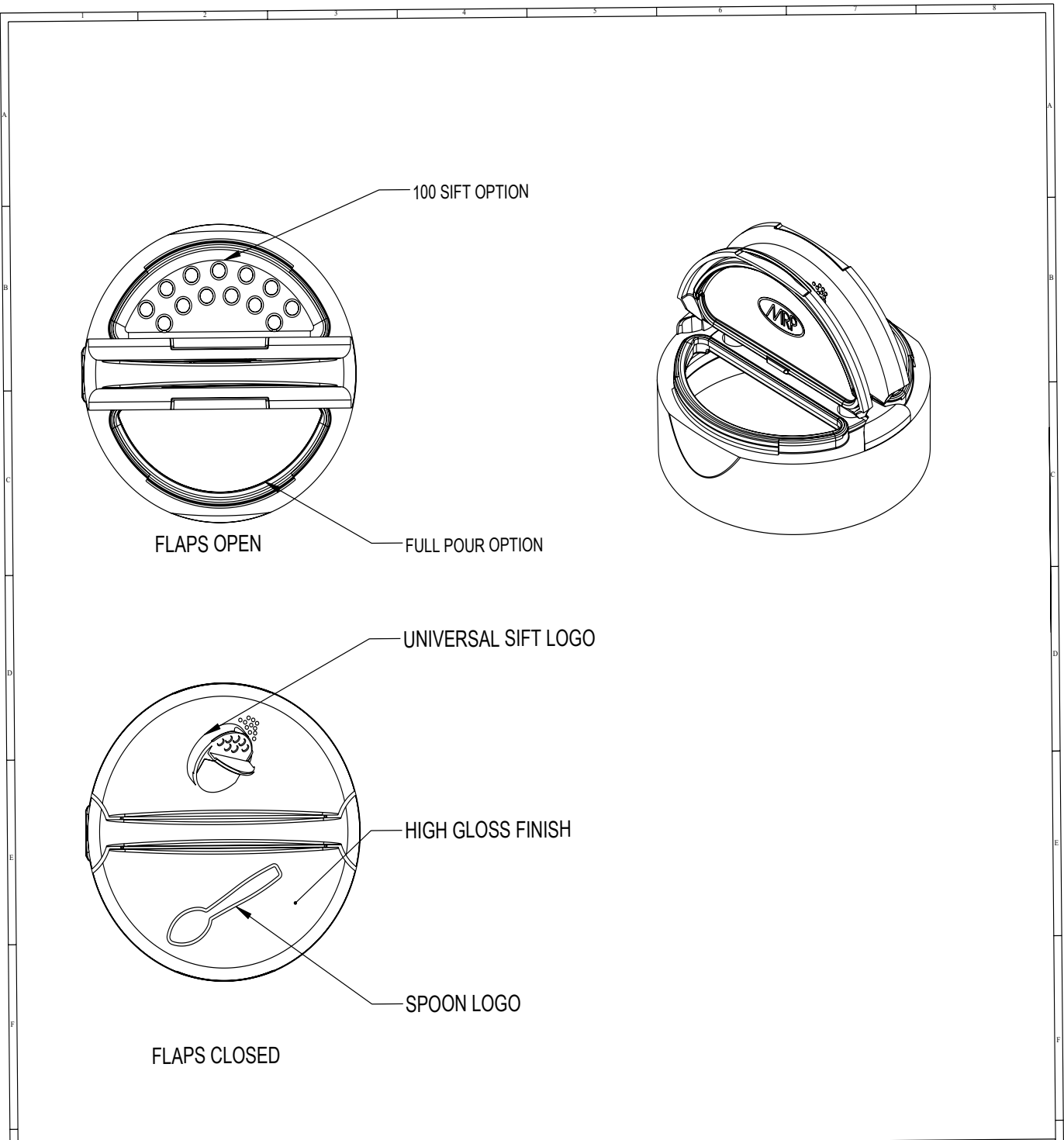


The
CARYCOMPANY
Est. 1895



SECTION A-A

STATIC TORQUE RECOMMENDATION: 21-36 in-lbs REQUIREMENT MAY VARY DEPENDING UPON CONTAINER MATERIAL, NECK FINISH, AND CAPPING EQUIPMENT	REFERENCE	TOLERANCE	DIMENSION	UNITS	DRAWING TITLE: 53-485 SRII DUAL FLAPPER 100 SIFT/ FULL POUR			
DIMENSIONS ENCLOSED IN () INDICATE REFERENCE DIMENSIONS AND NO TOLERANCE LIMITS ARE ESTABLISHED	E	±0.012 [0.30]	2.002 [50.85]	in [mm]				
	T	±0.012 [0.30]	2.087 [53.01]	in [mm]				
	H	±0.012 [0.30]	0.581 [14.76]	in [mm]				
	OD	±0.015 [0.38]	2.193 [55.70]	in [mm]				
	OAH	±0.012 [0.30]	0.793 [20.14]	in [mm]				
DIMENSIONS PRECEDED BY AN *** INDICATE THE DIMENSION IS PROCESS SENSITIVE. PROCESS SENSITIVE DIMENSIONS ARE VERIFIED TO BE WITHIN THE TOLERANCE LIMITS DURING THE PRODUCTION RUN. ALL REMAINING DIMENSIONS ARE VERIFIED AT PRODUCTION VALIDATION.	PART WEIGHT	± 0.70	9.10	g				
PROPRIETARY AND CONFIDENTIAL THIS DRAWING IS PROTECTED BY COPYRIGHT AND CONTAINS INFORMATION PROPRIETARY TO MOLD-RITE PLASTICS AND ITS SUBSIDIARIES. ANY REPRODUCTION, DISCLOSURE, OR USE OF ITS CONTENTS OR ANY PART THEREOF IS EXPRESSLY PROHIBITED EXCEPT AS MOLD-RITE PLASTICS AND ITS SUBSIDIARIES OTHERWISE MAY AGREE IN WRITING.	OPENING FORCE	± 2.0	3.5	lbf				
THIS MASTER DOCUMENT IS CONTROLLED ELECTRONICALLY. PRINTED OR DOWNLOADED COPIES ARE UNCONTROLLED. DOCUMENT USERS ARE RESPONSIBLE FOR ENSURING THEY HAVE THE LATEST REVISION PRIOR TO USE.	THREAD DETAIL INFORMATION:	6 THREADS PER INCH	0.167" [4.24] PITCH	540° FULL DEPTH THREADS	MATERIAL: POLYPROPYLENE			
THE PART DIMENSIONS DEPICTED ARE THOSE WHICH HAVE GENERALLY BEEN FOUND TO BE FUNCTIONAL BASED ON INDUSTRY EXPERIENCE. BECAUSE OF VARIABILITY IN CONTAINER FINISHES, EACH CLOSURE/FINISH SYSTEM SHOULD BE INDIVIDUALLY EVALUATED AND TESTED TO ENSURE IT MEETS APPLICABLE PERFORMANCE CRITERIA.					DRAWING TYPE: CUSTOMER	DISTRIBUTION CODE: D		
					REPLACES DRAWINGS: (DRAWING REPLACED)			
					MODEL NUMBER: PM 10460 53-485 SRII DF			
				DRAWN BY: BDG 12/7/2022	DWG SIZE: 8.5" x 11"	DRAWING NUMBER:	REVISION:	
				ENG APPR: BDG 12/15/2022	SCALE: 1:1 & NOTED	SHEET: 1 OF 3	CQA-10462	00.AB
				QA APPR: DMD 12/21/2022				
MOLD-RITE PLASTICS AND ITS SUBSIDIARIES RESERVE THE RIGHT TO REVISE ANY OR ALL SPECIFICATIONS AND REQUIREMENTS.								



DIMENSIONS ENCLOSED IN () INDICATE REFERENCE DIMENSIONS AND NO TOLERANCE LIMITS ARE ESTABLISHED

PROPRIETARY AND CONFIDENTIAL
THIS DRAWING IS PROTECTED BY COPYRIGHT AND CONTAINS INFORMATION PROPRIETARY TO MOLD-RITE PLASTICS AND ITS SUBSIDIARIES. ANY REPRODUCTION, DISCLOSURE, OR USE OF ITS CONTENTS OR ANY PART THEREOF IS EXPRESSLY PROHIBITED EXCEPT AS MOLD-RITE PLASTICS AND ITS SUBSIDIARIES OTHERWISE MAY AGREE IN WRITING

THE PART DIMENSIONS DEPICTED ARE THOSE WHICH HAVE GENERALLY BEEN FOUND TO BE FUNCTIONAL BASED ON INDUSTRY EXPERIENCE. BECAUSE OF VARIABILITY IN CONTAINER FINISHES, EACH CLOSURE/FINISH SYSTEM SHOULD BE INDIVIDUALLY EVALUATED AND TESTED TO ENSURE IT MEETS APPLICABLE PERFORMANCE CRITERIA. MOLD-RITE PLASTICS AND ITS SUBSIDIARIES RESERVE THE RIGHT TO REVISE ANY OR ALL SPECIFICATIONS AND REQUIREMENTS.

REVISIONS						
DATE	REV.	N/P	DESCRIPTION	ENG	DRW	
01/12/2017	00	AA	UPDATED DRAWING FORMAT	BDG	DAS	
12/14/2022	00	AB	UPDATED FORMAT & SPECIFICATION TO ALIGN WITH CURRENT PRODUCTION CAPABILITY	BDG	BDG	

REVISION HISTORY

REVISIONS: REV: A PHYSICAL CHANGE TO THE PART IMPACTING FIT, FORM OR FUNCTION
N/P: DRAWING OR SPECIFICATION CHANGE ONLY

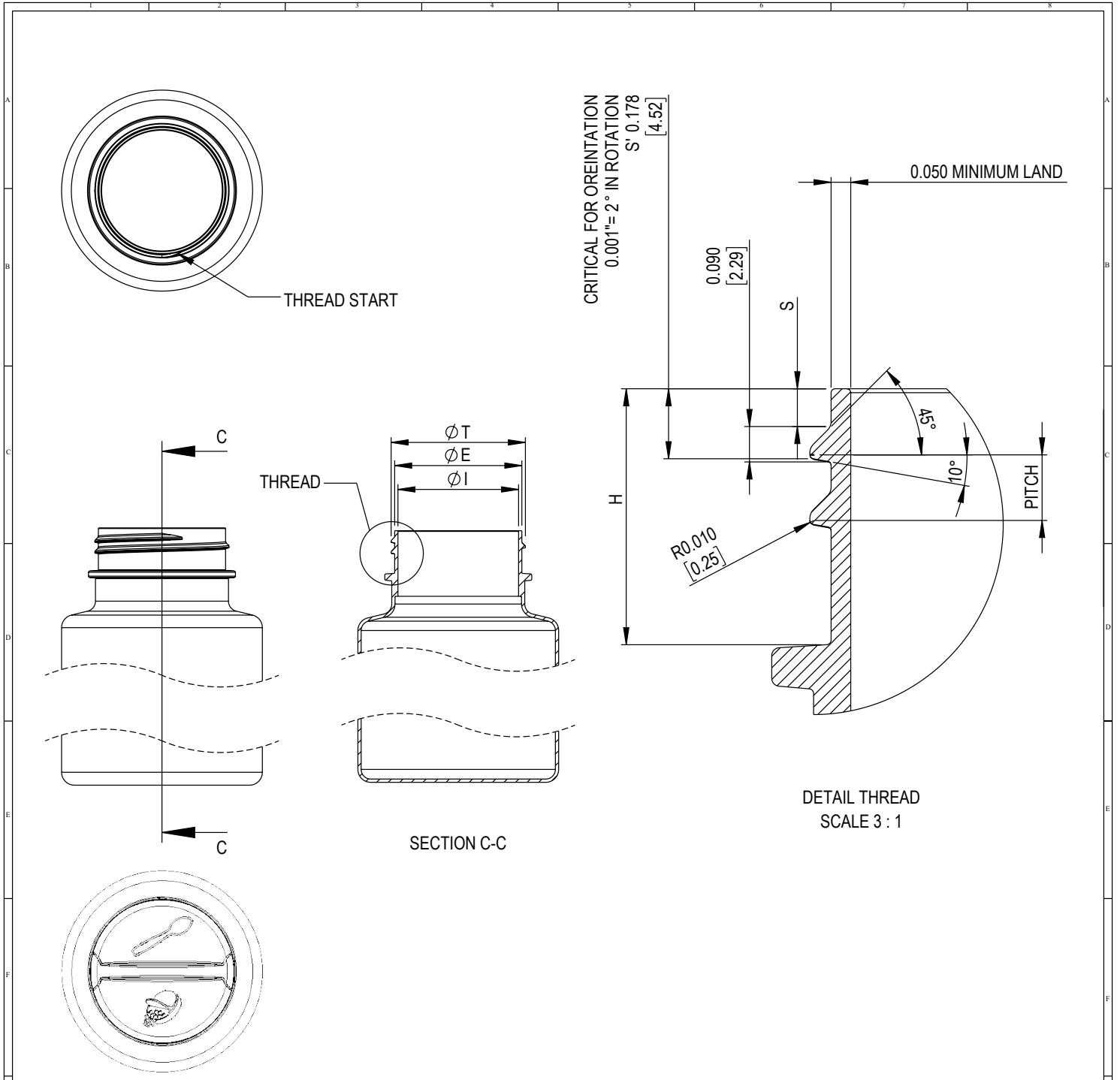
DRAWING TITLE:
53-485 SR11 DUAL FLAPPER
100 SIFT/ FULL POUR

THIS MASTER DOCUMENT IS CONTROLLED ELECTRONICALLY. PRINTED OR DOWNLOADED COPIES ARE UNCONTROLLED. DOCUMENT USERS ARE RESPONSIBLE FOR ENSURING THEY HAVE THE LATEST REVISION PRIOR TO USE.

DRAWING TYPE: CUSTOMER DISTRIBUTION CODE: **D**

DWG SIZE: 8.5" x 11" DRAWING NUMBER: **CQA-10462** REVISION: **00**

SCALE: 1:1 & NOTED SHEET: 2 OF 3



DETAIL THREAD
SCALE 3 : 1

REFERENCE	TOLERANCE	UNITS	DIMENSION
E	±0.017[0.43]	in [mm]	1.942 [49.37]
T	±0.017[0.43]	in [mm]	2.050 [52.07]
I	MINIMUM	in [mm]	1.764 [44.70]
S	±0.015[0.38]	in [mm]	0.096 [2.44]
H	±0.015[0.38]	in [mm]	0.650 [16.51]
PITCH		in [mm]	0.167 [4.24]
TPI			6

RECOMMENDED NECK FINISH IS DETERMINED FOR PROPER FUNCTIONAL PERFORMANCE WITH MOLD-RITE CLOSURE. USE OF MOLD-RITE CLOSURE WITH CONTAINER NOT MATCHING RECOMMENDED NECK FINISH SHOULD BE TESTED AND CONFIRMED FOR APPLICATION BY THE USER.			
NOMINAL ORIENTATION OF CLOSURE (IF INDICATED) IS BASED ON NOMINAL DIMENSIONS OF BOTH CLOSURE AND RECOMMENDED NECK FINISH. FOR EXACT ORIENTATION, EACH CONTAINER SHOULD BE EVALUATED ON A CASE BY CASE BASIS.			
DIMENSIONS ENCLOSED IN () INDICATE REFERENCE DIMENSIONS AND NO TOLERANCE LIMITS ARE ESTABLISHED			
PROPRIETARY AND CONFIDENTIAL THIS DRAWING IS PROTECTED BY COPYRIGHT AND CONTAINS INFORMATION PROPRIETARY TO MOLD-RITE PLASTICS AND ITS SUBSIDIARIES. ANY REPRODUCTION, DISCLOSURE, OR USE OF ITS CONTENTS OR ANY PART THEREOF IS EXPRESSLY PROHIBITED EXCEPT AS MOLD-RITE PLASTICS AND ITS SUBSIDIARIES OTHERWISE MAY AGREE IN WRITING			
THE PART DIMENSIONS DEPICTED ARE THOSE WHICH HAVE GENERALLY BEEN FOUND TO BE FUNCTIONAL BASED ON INDUSTRY EXPERIENCE. BECAUSE OF VARIABILITY IN CONTAINER FINISHES, EACH CLOSURE/FINISH SYSTEM SHOULD BE INDIVIDUALLY EVALUATED AND TESTED TO ENSURE IT MEETS APPLICABLE PERFORMANCE CRITERIA.			
MOLD-RITE PLASTICS AND ITS SUBSIDIARIES RESERVE THE RIGHT TO REVISE ANY OR ALL SPECIFICATIONS AND REQUIREMENTS.			

DRAWING TITLE:			
53-485 SRII DUAL FLAPPER			
100 SIFT/ FULL POUR			
RECOMMENDED NECK FINISH			
THIS MASTER DOCUMENT IS CONTROLLED ELECTRONICALLY. PRINTED OR DOWNLOADED COPIES ARE UNCONTROLLED. DOCUMENT USERS ARE RESPONSIBLE FOR ENSURING THEY HAVE THE LATEST REVISION PRIOR TO USE.			
DRAWING TYPE: CUSTOMER		DISTRIBUTION CODE: D	
DWG SIZE: 8.5" x 11"	DRAWING NUMBER:		REVISION:
SCALE: 1:2 & NOTED	SHEET: 3 OF 3	CQA-10462	00.AB