

IF YOU...

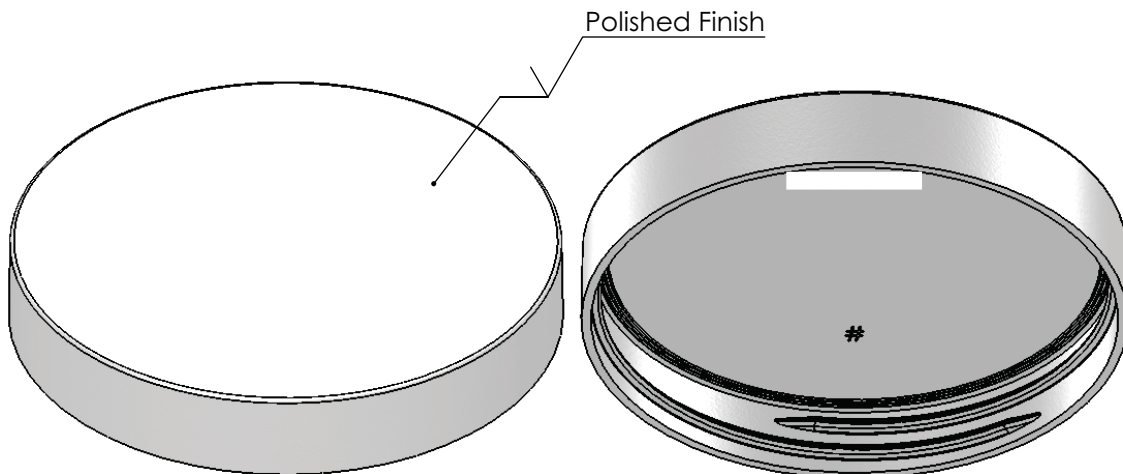
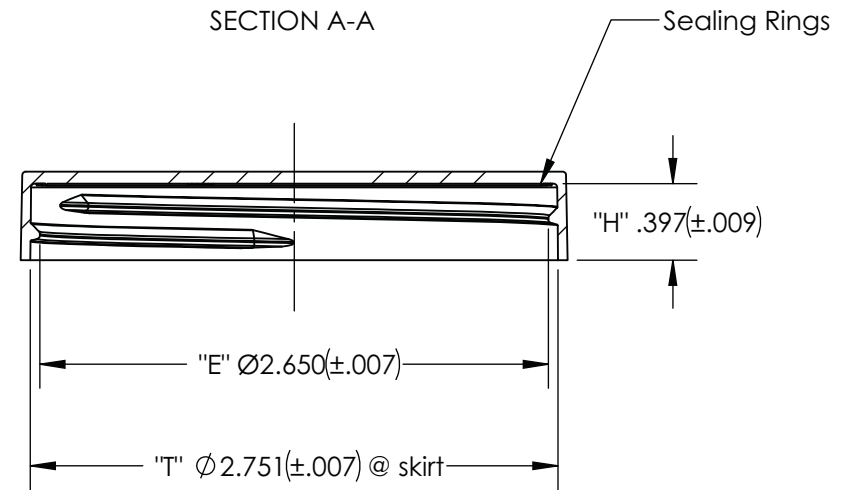
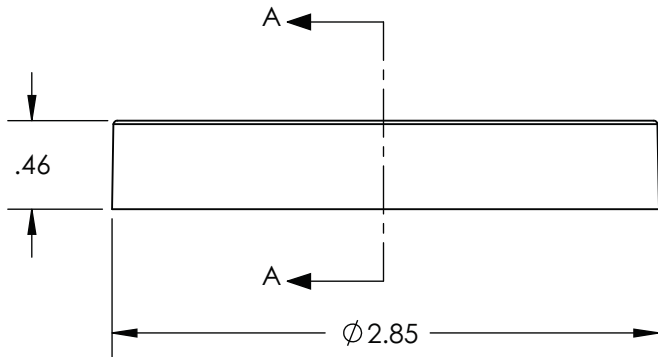


MIX IT. FILL IT. PACK IT. SHIP IT.

WE HAVE A PRODUCT FOR YOU



Part #	67W70S
Neck Width	70mm
Neck Finish	70-400
Color	Black
Material	PP



DRAWING NAME:		PART DWG - C070PPWSS - MCI016-036	
PART NAME:		PART #:	REV:
70 mm Smooth Top/Smooth Side Closure		C070PPWSS : MCI016-036	B
		2 0 1 2	BY: DATE:
		DRAWN	S.B. 4/17/2012
		CHECKED	S.B. 4/17/2012
		APPROVED	S.B. 4/17/2012
		DIMENSIONS ARE IN INCHES	
		TOLERANCES (UNLESS SPECIFIED)	.00 = $\pm .015$.000 = $\pm .010$
THREAD PITCH:	# OF THREAD TURNS:	ANGULAR TOLERANCE	
6 T.P.I.	1-1/8 TURNS	$\pm 1/2$ DEGREE	
GATE LOCATION:	PART WEIGHT:	THIRD ANGLE PROJECTION	
EXTERIOR - SIDE WALL	8 Grams ($\pm 5\%$)		
MATERIAL:	PLASTIC FINISH NUMBER 400	SHEET SCALE:	SHEET SIZE:
POLYPROPYLENE		FULL	A



PH 630-629-6600 - FX 630-629-3690
1195 W. FULLERTON AVE. - ADDISON, IL 60101
WWW.THECARYCOMPANY.COM

PRODUCT DATA SHEET

PRESSURE SEAL 020

PRODUCT DESCRIPTION

Description: A polystyrene foam coated with a pressure sensitive coating.

FDA Status: Complies with Federal Regulations of H.E.W., FDA, sections 175.125, 175.300, 177.1640, 178.3010, and 178.3710. It is entered in SANCAP Liner's food master file FMF 166 and drug master file DMF 2518.

PHYSICAL AND CHEMICAL PROPERTIES

- | | |
|---|------------------------|
| 1. Color | White-Plain or Printed |
| 2. Thickness, mils | |
| a) Overall | 20.0 - 25.0 |
| b) Wax | 2.0 - 3.0 |
| c) Foam | 18.0 - 22.0 |
| 3. Basis Wt. Lbs./Ream 3000 ft.² | |
| a) Overall | 92.46 - 120.12 |
| b) Wax | 25.46 - 38.12 |
| c) Foam | 67.00 - 82.00 |
| 4. Gas Transmission: cc/cin²/24hrs/1atm | |
| a) Oxygen | 109.68 |
| 5. Water Vapor Transmission | |
| a) gm/cin ² /24hrs/100°F/90%RH | 0.27 |
| 6. Melting Point °F | 170 - 180 |
| Softening Point °F | 148 - 152 |

RECOMMENDED STORAGE CONDITIONS

The material should be stored in well-ventilated area (temp. 60° - 80°F; RH - 40% - 60%). Material and lined closures are heat and pressure sensitive. Storage or shipping temperatures should not be in excess of 105°F. Blocking may result. If material becomes chilled, it should be stored under the recommended conditions until stabilized. Avoid storing closure liner material over 60 days.

SUGGESTED PRODUCT USES

Material is a styrene foam innerseal coated with a torque activated coating. It has adhesion to glass and plastic bottles with metal or plastic caps. Sealing properties should be checked after being stored for 12 hours.

Dry Products	Spices
Candy	Syrup

Product applications listed above are a partial listing and do not cover all suitable applications. These are recommendations for general categories and user must test for suitability for their specific product. Not suitable for products containing oil.