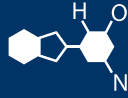


IF YOU...



MIX IT. FILL IT. PACK IT. SHIP IT.

WE HAVE A **PRODUCT** FOR YOU

Part # 67W7BH

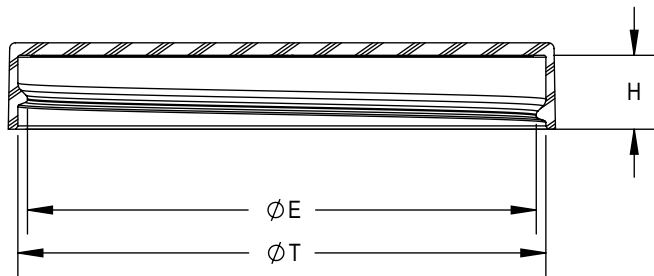
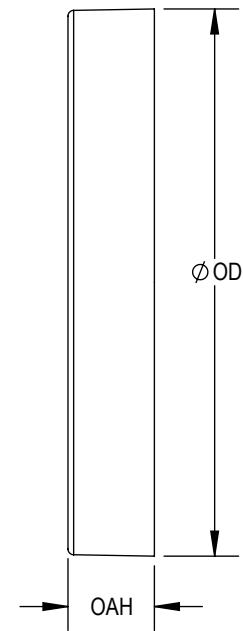
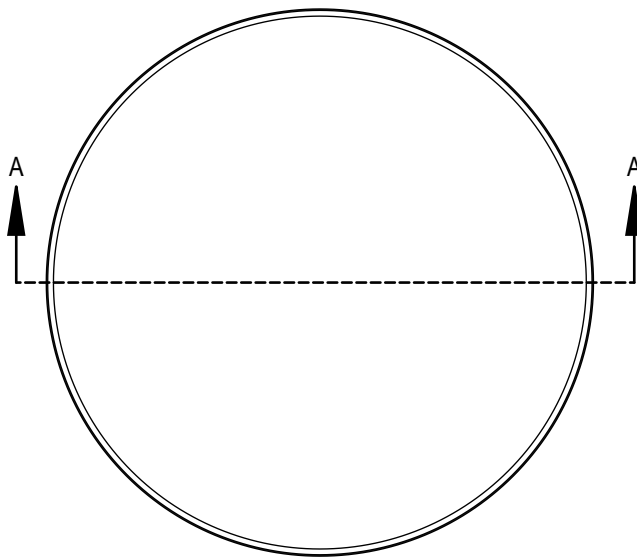
Continuous Thread Caps

70mm 70-400 Black Smooth
Plastic Cap w/HIS for PET



The
CARYCOMPANY
Est. 1895

1195 W. Fullerton Ave. | Addison, IL 60101 | T: 630.629.6600 | F: 630.629.3690 | TheCaryCompany.com



SECTION A-A

THREAD DETAIL:
6 THREADS PER INCH, 0.167" PITCH

| REFERENCE | TOLERANCE | UNITS | DIMENSION |
|-------------|---------------|---------|---------------|
| E | ±0.015 [0.38] | in [mm] | 2.650 [67.31] |
| T | ±0.020 [0.51] | in [mm] | 2.750 [69.85] |
| H | ±0.015 [0.38] | in [mm] | 0.392 [9.96] |
| OAH | ±0.020 [0.51] | in [mm] | 0.450 [11.43] |
| OD | ±0.025 [0.64] | in [mm] | 2.850 [72.39] |
| PART WEIGHT | ± 1.5 | g | 7.8 |

STATIC TORQUE RECOMMENDATION
28-50 in-lbs
THIS REQUIREMENT MAY VARY DEPENDING
UPON BOTTLE MATERIAL, NECK FINISH, AND
CAPPING EQUIPMENT

DRAWING TYPE : **CUSTOMER**

REPLACES DRAWINGS:
C-1015-S

DIMENSIONS ENCLOSED IN ()
INDICATE REFERENCE
DIMENSIONS AND NO TOLERANCE
LIMITS ARE ESTABLISHED

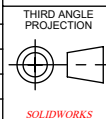
TOLERANCES UNLESS OTHERWISE SPECIFIED

| DIMENSION (inches) | TOLERANCE | DIMENSION (mm) | TOLERANCE |
|--------------------|-----------|----------------|-----------|
| 0-0.787 | ±0.006 | 0-20 | ±0.152 |
| 0.788-1.181 | ±0.008 | 21-30 | ±0.203 |
| 1.182-2.756 | ±0.012 | 31-70 | ±0.305 |
| 2.757-3.937 | ±0.016 | 71-100 | ±0.406 |
| 3.938-5.096 | ±0.020 | 101-150 | ±0.508 |
| 5.097-7.874 | ±0.024 | 151-200 | ±0.610 |
| 7.875-9.843 | ±0.032 | 201-250 | ±0.813 |

ANGULAR TOLERANCE ± 2°

PROPRIETARY AND CONFIDENTIAL

The
CARY COMPANY
Est. 1895



THIRD ANGLE
PROJECTION
D

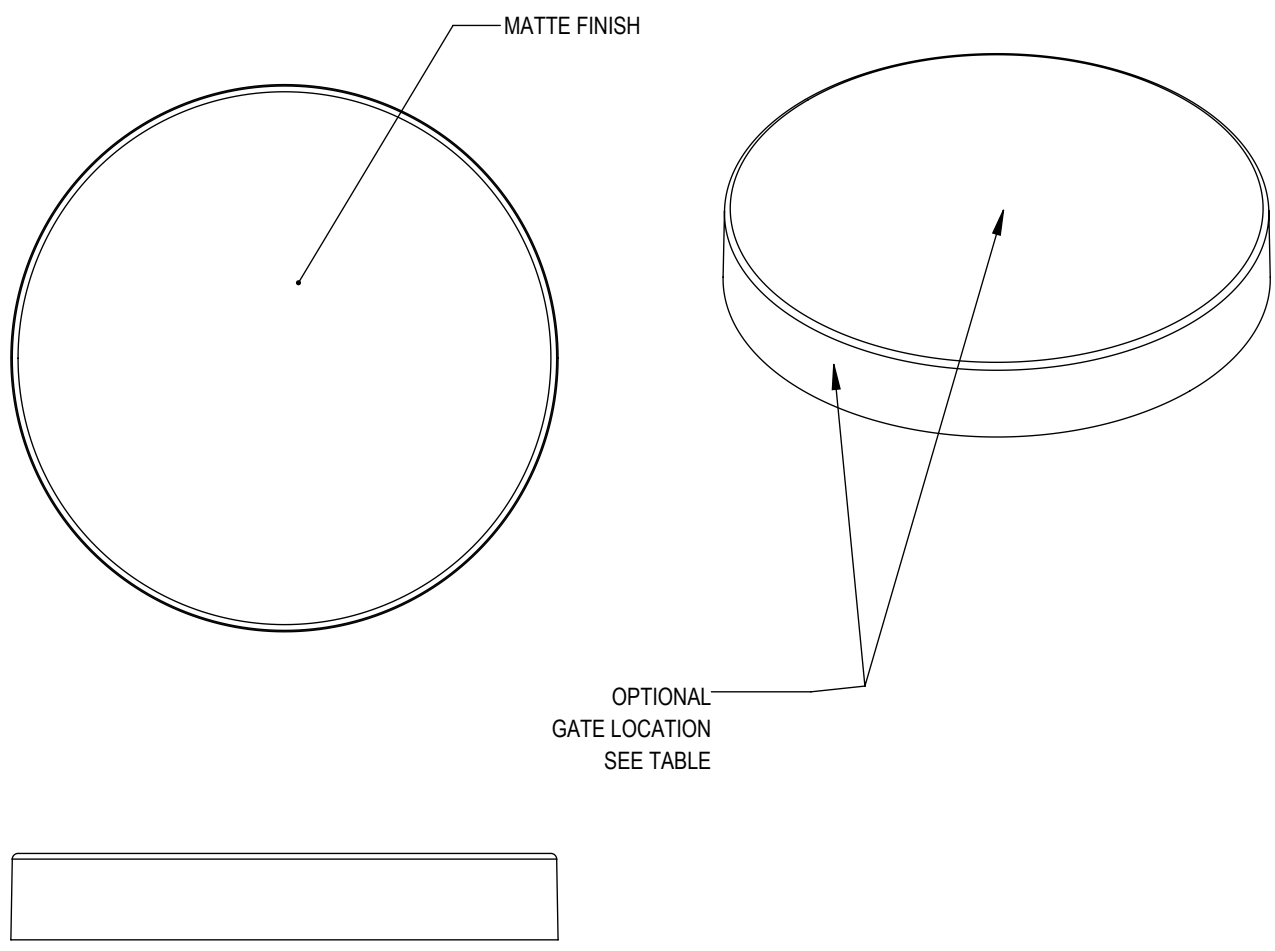
DISTRIBUTION
CODE
D

DRAWING NAME
**70-400 CT CLOSURE
S (Smooth Side Smooth Top)**
DRAWING NUMBER
CQA - 10748

DRAWN BY: JR 6/3/2016
ENG APPR: BDG 4/6/2018
QA APPR: REL 08/13/2018

MATERIAL
POLYPROPYLENE
MODEL NUMBER:
PM 11104 70-400 CT
SCALE: 1:1 SHEET SIZE: 8.5" X 11" SHEET: 1 of 3 REV NP: 00.AA

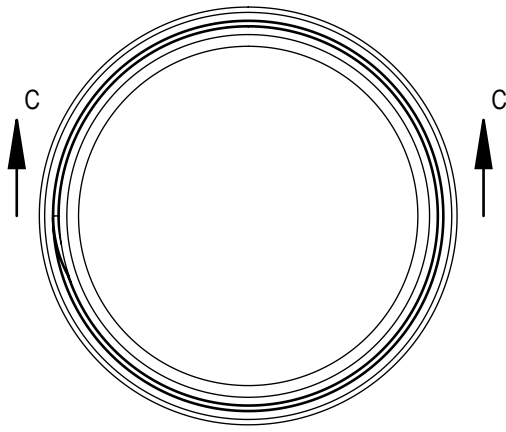
| REVISIONS | | | | | | |
|------------|------|-----|-------------------------|---|-----|-----|
| DATE | REV. | N/P | PRODUCT DRAWING REQUEST | DESCRIPTION | ENG | DRW |
| 12/02/2013 | 01 | AA | | REDRAWN ON NEW FORMATS | JR | JR |
| 01/19/2018 | 01 | AB | PDR 18-067 | UPDATED FORMAT AND ASSIGNED NEW PART NUMBER. DIMENSIONAL SPECIFICATIONS UPDATED BASED ON PRODUCTION CAPABILITY. NO STEEL CHANGES OCCURED. | BDG | DAS |



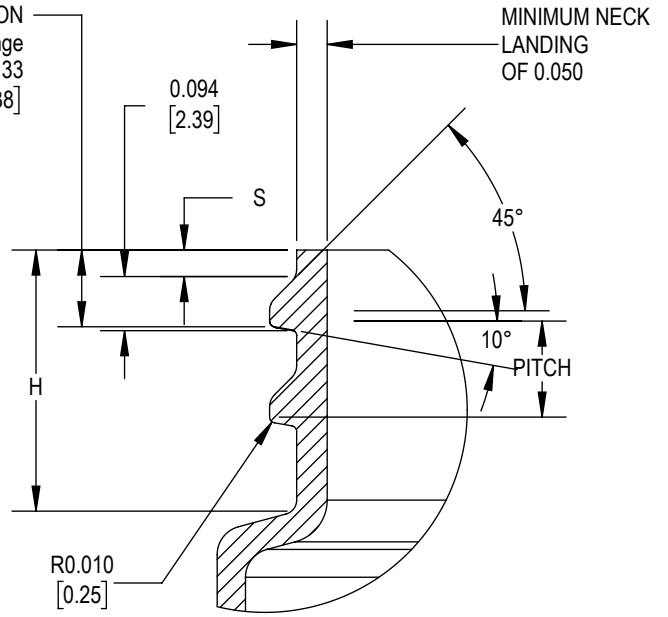
| MOLD NUMBER | GATE LOCATION | |
|-------------|---------------|-----|
| | SIDE | TOP |
| 70003 | X | |
| 70007 | X | |
| 70008 | | X |

| DRAWING TYPE : CUSTOMER | | | |
|--|-----------|---|-----------|
| REFERENCES: 70003 70007 70008 | | DIMENSIONS ENCLOSED IN () INDICATE REFERENCE DIMENSIONS AND NO TOLERANCE LIMITS ARE ESTABLISHED | |
| TOLERANCES UNLESS OTHERWISE SPECIFIED | | | |
| DIMENSION (inches) | TOLERANCE | DIMENSION (mm) | TOLERANCE |
| 0-0.787 | ±0.006 | 0-20 | ±0.152 |
| 0.788-1.181 | ±0.008 | 21-30 | ±0.203 |
| 1.182-2.756 | ±0.012 | 31-70 | ±0.305 |
| 2.757-3.937 | ±0.016 | 71-100 | ±0.406 |
| 3.938-5.096 | ±0.020 | 101-150 | ±0.508 |
| 5.097-7.874 | ±0.024 | 151-200 | ±0.610 |
| 7.875-9.843 | ±0.032 | 201-250 | ±0.813 |
| ANGULAR TOLERANCE ± 2° | | | |
| PROPRIETARY AND CONFIDENTIAL | | | |

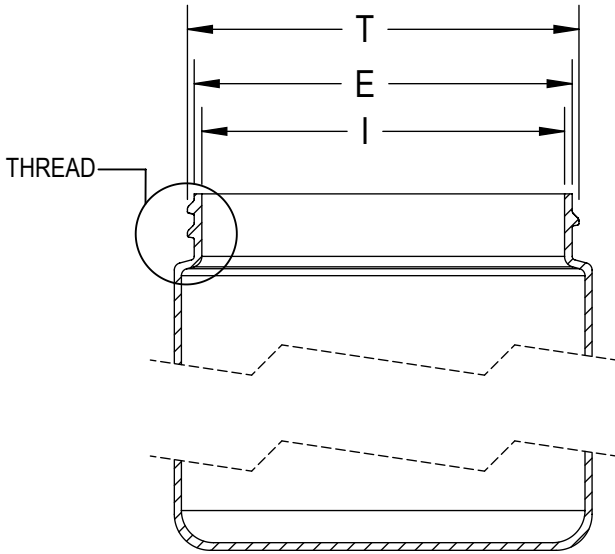
| | | | |
|----------------------------|-------------------------------|---|------------------------|
| THIRD ANGLE PROJECTION | DISTRIBUTION CODE D | DRAWING NAME 70-400 CT CLOSURE S (Smooth Side Smooth Top) | |
| | | DRAWING NUMBER CQA - 10748 | |
| DRAWN BY. JR | 6/3/2016 | MATERIAL POLYPROPYLENE | |
| ENG APPR. BDG | 4/6/2018 | MODEL NUMBER: PM 11104 70-400 CT | |
| QA APPR. REL | 08/13/2018 | SCALE 1:1 | SHEET SIZE 8.5 X 11 |
| | | SHEET 2 of 3 | REV.NP 00.AA |



CRITICAL FOR ORIENTATION
 .001" = 2 Degrees in Change
 S' 0.133
 [3.38]



DETAIL THREAD
 SCALE 3 : 1



SECTION C-C

| REFERENCE | TOLERANCE | UNITS | DIMENSION |
|-----------|---------------|---------|---------------|
| E | ±0.017 [0.43] | in [mm] | 2.625 [66.68] |
| T | ±0.017 [0.43] | in [mm] | 2.719 [69.06] |
| I | MIN | in [mm] | 2.232 [56.69] |
| S | ±0.015 [0.38] | in [mm] | 0.046 [1.17] |
| H | MIN | in [mm] | 0.408 [10.36] |
| TPI | | | 6 |
| PITCH | | in [mm] | 0.167 [4.24] |

NOTE: THE NOMINAL ORIENTATION ILLUSTRATED IS BASED ON NOMINAL DIMENSIONS OF BOTH THE CLOSURE AND THE RECOMMENDED NECK FINISH. FOR EXACT ORIENTATION EACH BOTTLE SHOULD BE EVALUATED ON A CASE BY CASE BASIS.

DRAWING TYPE : CUSTOMER

DIMENSIONS ENCLOSED IN () INDICATE REFERENCE DIMENSIONS AND NO TOLERANCE LIMITS ARE ESTABLISHED

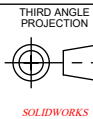
TOLERANCES UNLESS OTHERWISE SPECIFIED

| DIMENSION (inches) | TOLERANCE | DIMENSION (mm) | TOLERANCE |
|--------------------|-----------|----------------|-----------|
| 0-0.787 | ±0.006 | 0-20 | ±0.152 |
| 0.788-1.181 | ±0.008 | 21-30 | ±0.203 |
| 1.182-2.756 | ±0.012 | 31-70 | ±0.305 |
| 2.757-3.937 | ±0.016 | 71-100 | ±0.406 |
| 3.938-5.096 | ±0.020 | 101-150 | ±0.508 |
| 5.097-7.874 | ±0.024 | 151-200 | ±0.610 |
| 7.875-9.843 | ±0.032 | 201-250 | ±0.813 |

ANGULAR TOLERANCE ± 2°

PROPRIETARY AND CONFIDENTIAL

The
CARY COMPANY
 Est. 1895



DISTRIBUTION CODE
D

DRAWING NAME
**70-400 CT CLOSURE
 RECOMMENDED NECK FINISH**
 DRAWING NUMBER
CQA - 10748

DRAWN BY: JR 6/3/2016

MATERIAL

ENG APPR: BDG 4/6/2018

MODEL NUMBER:

QA APPR: REL 08/13/2018

| | | | |
|-------|------------|--------|---------|
| SCALE | SHEET SIZE | SHEET | REV/N/P |
| 3:4 | 8.5 X 11 | 3 of 3 | 00.AA |