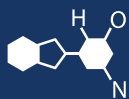


# IF YOU...



MIX IT. FILL IT. PACK IT. SHIP IT.

## WE HAVE A **PRODUCT** FOR YOU

Part #: 67W7BL

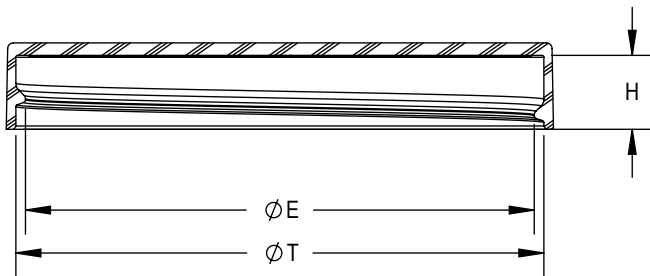
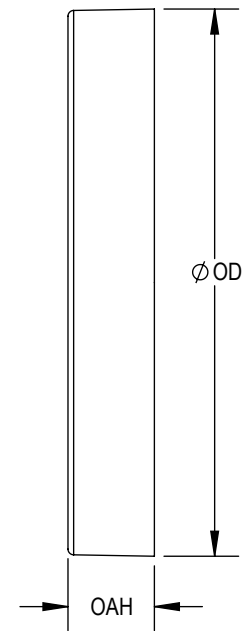
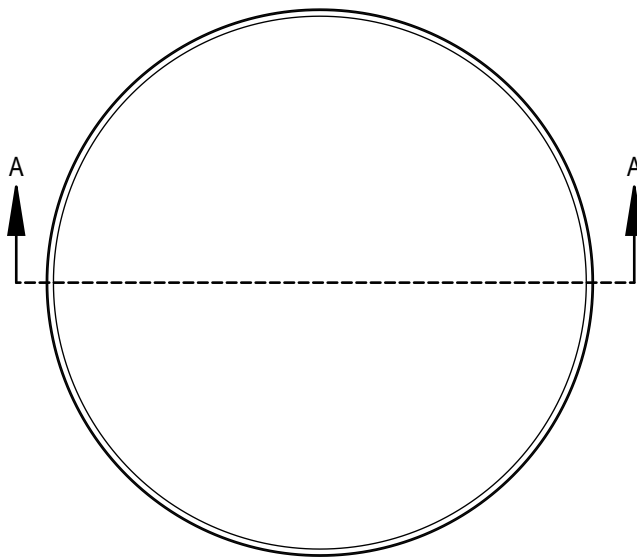
Continuous Thread Caps

70mm 70-400 Black Smooth Plastic Cap  
w/Foam Liner (3-ply)



The  
**CARY**COMPANY  
Est. 1895

1195 W. Fullerton Ave. | Addison, IL 60101 | T: 630.629.6600 | F: 630.629.3690 |



SECTION A-A

**THREAD DETAIL:**  
6 THREADS PER INCH, 0.167" PITCH

REFERENCE	TOLERANCE	UNITS	DIMENSION
E	±0.015 [0.38]	in [mm]	2.650 [67.31]
T	±0.020 [0.51]	in [mm]	2.750 [69.85]
H	±0.015 [0.38]	in [mm]	0.392 [9.96]
OAH	±0.020 [0.51]	in [mm]	0.450 [11.43]
OD	±0.025 [0.64]	in [mm]	2.850 [72.39]
PART WEIGHT	± 1.5	g	7.8

STATIC TORQUE RECOMMENDATION  
**28-50 in-lbs**  
THIS REQUIREMENT MAY VARY DEPENDING  
UPON BOTTLE MATERIAL, NECK FINISH, AND  
CAPPING EQUIPMENT

DRAWING TYPE : **CUSTOMER**

REPLACES DRAWINGS:  
C-1015-S

DIMENSIONS ENCLOSED IN ( )  
INDICATE REFERENCE  
DIMENSIONS AND NO TOLERANCE  
LIMITS ARE ESTABLISHED

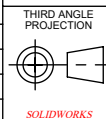
TOLERANCES UNLESS OTHERWISE SPECIFIED

DIMENSION (inches)	TOLERANCE	DIMENSION (mm)	TOLERANCE
0-0.787	±0.006	0-20	±0.152
0.788-1.181	±0.008	21-30	±0.203
1.182-2.756	±0.012	31-70	±0.305
2.757-3.937	±0.016	71-100	±0.406
3.938-5.096	±0.020	101-150	±0.508
5.097-7.874	±0.024	151-200	±0.610
7.875-9.843	±0.032	201-250	±0.813

ANGULAR TOLERANCE ± 2°

PROPRIETARY AND CONFIDENTIAL

The  
**CARY COMPANY**  
Est. 1895



THIRD ANGLE  
PROJECTION  
**D**

DISTRIBUTION  
CODE  
**D**

DRAWING NAME  
**70-400 CT CLOSURE  
S (Smooth Side Smooth Top)**  
DRAWING NUMBER  
**CQA - 10748**

DRAWN BY: JR 6/3/2016  
ENG APPR: BDG 4/6/2018  
QA APPR: REL 08/13/2018

MATERIAL  
**POLYPROPYLENE**  
MODEL NUMBER:  
**PM 11104 70-400 CT**  
SCALE: 1:1 SHEET SIZE: 8.5" X 11" SHEET: 1 of 3 REV NP: 00.AA