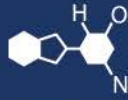


IF YOU...



MIX IT. FILL IT. PACK IT. SHIP IT.

WE HAVE A PRODUCT FOR YOU

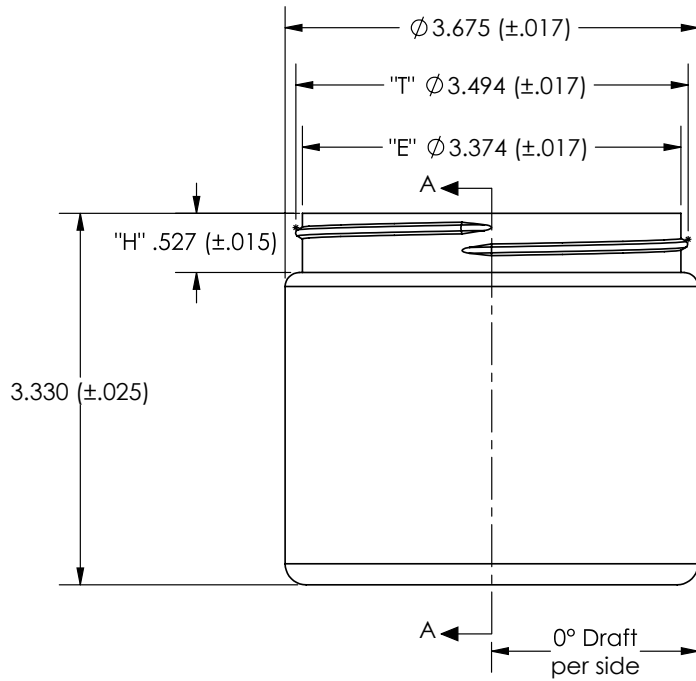
Part #: 67WA16



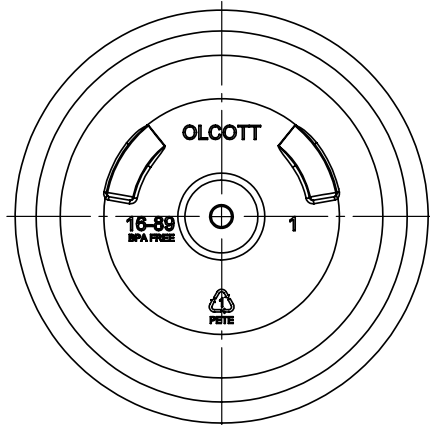
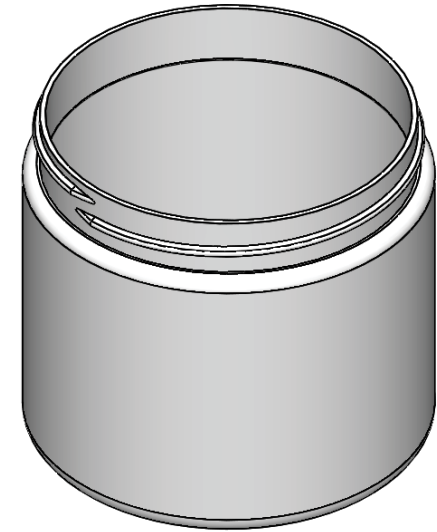
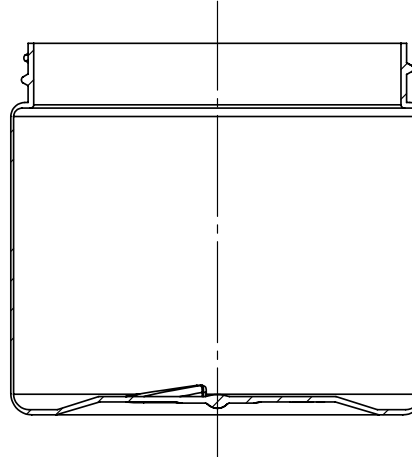
The
CARYCOMPANY
Est. 1895

1195 W. Fullerton Ave. | Addison, IL 60101 | T: 630.629.6600 | F: 630.629.3690 |

PROPRIETARY AND CONFIDENTIAL:
 THE INFORMATION CONTAINED IN THIS DRAWING IS THE SOLE PROPERTY OF THE CARY COMPANY.
 ANY REPRODUCTION IN PART OR AS A WHOLE WITHOUT THE WRITTEN PERMISSION OF THE CARY COMPANY IS PROHIBITED.



SECTION A-A



DRAWING NAME: PART DWG - 67WA16		PART #:		REV:
PART NAME: 16 Oz 89mm 89-400 Amber PET Straight Sided Jar		67WA16		A
2019		BY:	DATE:	
DRAWN		S.J.	12/17/2019	
CHECKED		P.M.	2/7/2020	
APPROVED		B.C.	2/7/2020	
TOLERANCES (UNLESS SPECIFIED)		DIMENSIONS ARE IN INCHES		
		.00 = $\pm .015$		
		.000 = $\pm .010$		
THREAD PITCH:	5 T.P.I.	# OF THREAD TURNS:	1 FULL TURNS	
DRAFT ANGLE:	0° Degree	PROJECTED COSMETIC FILL:	450 (± 11) mL 15.2 ($\pm .4$) OZ	
GATE LOCATION:	EXTERIOR - CENTER	PROJECTED OVERFLOW:	522 (± 11) mL 17.6 ($\pm .4$) OZ	
MATERIAL:	PETE	PART WEIGHT:	38.5 Grams ($\pm 5\%$)	
THIRD ANGLE PROJECTION		SHEET SCALE:	FULL	SHEET SIZE: A